

# PORCELANOSA FACADE/

## **Active Stock Catalog**

Your Guide to  
Readily-Available Porcelain  
Colors and Finishes

For your projects under 15,000 SF of cladding

# Introduction to the Active Stock Catalog

## Purpose

You’ve likely found your way to this **Active Stock Catalog** because you have a project with less than 15,000 SF of exterior porcelain cladding and you were directed here from our website or main catalog.

Whatever reason you’re here, we’re glad to have you. As the name of the catalog would suggest, you’ll find an updated list of our current active stock of Colors and Finishes for each family.

## When To Use This Catalog

Find out whether your project is above or below 15,000 SF of exterior porcelain cladding production

- If your façade is above 15,000 SF of exterior porcelain cladding, your project is applicable for our Special Production – “Choose Your Color and Your Size.” Check page 24 of our Main Catalog.
- If your façade is less than 15,000 SF, then use this Active Stock Catalog.

## How to Calculate Cladding Take-off

Let’s say your facade has 12,000 SF of exterior porcelain cladding material (net area). When you add waste factor (10-25%) you might be at 15,000 SF of material production.

This means **your project qualifies for our Special Production – “Choose Your Color and Your Size”**. Learn more about it in our Main Catalog at page 24.

## Do you want us to help you checking take-off?

Just give us a call...  
1.866.FACHADA

Or email us at  
hello@porcelanosafacades.com

## What is “Active Stock”?

With so many possible combinations of porcelain Colors and Finishes, having them all readily available for any project size would be a little crazy-making. And unsustainable.

That’s why we’ve taken a selection of our most popular Colors and Finishes in each series. And created this **Active Stock Catalog** of readily-available combinations for your projects that have less than 15,000 SF of cladding.





# Questions?

Give us a call at  
1.866.FACHADA

Or email us at  
hello@porcelanosafacades.com

As you look through this annex to our main catalog, you'll want to have the main catalog or website handy as well. Refer back to those resources for images of the different Colors and Finishes you find listed here.

And, if you have a larger project, with more than 15,000 SF of exterior porcelain cladding... Don't forget! You can always go back to that main catalog or website. And pick from our entire collection of porcelain finishes and sizes for your project.

## Updates

This **Active Stock Catalog** is only available digitally. And will be updated as frequently as necessary to ensure you'll be able to see our current available stock of Colors and Finishes.

If you've printed or downloaded this PDF, be sure to check back on the website for the most current **Active Stock Catalog**.

## The Rule of Halves & Thirds

As you look through this catalog, you'll see some colors that have one of the larger sizes (48 x 48, 24 x 24, etc) listed as available.

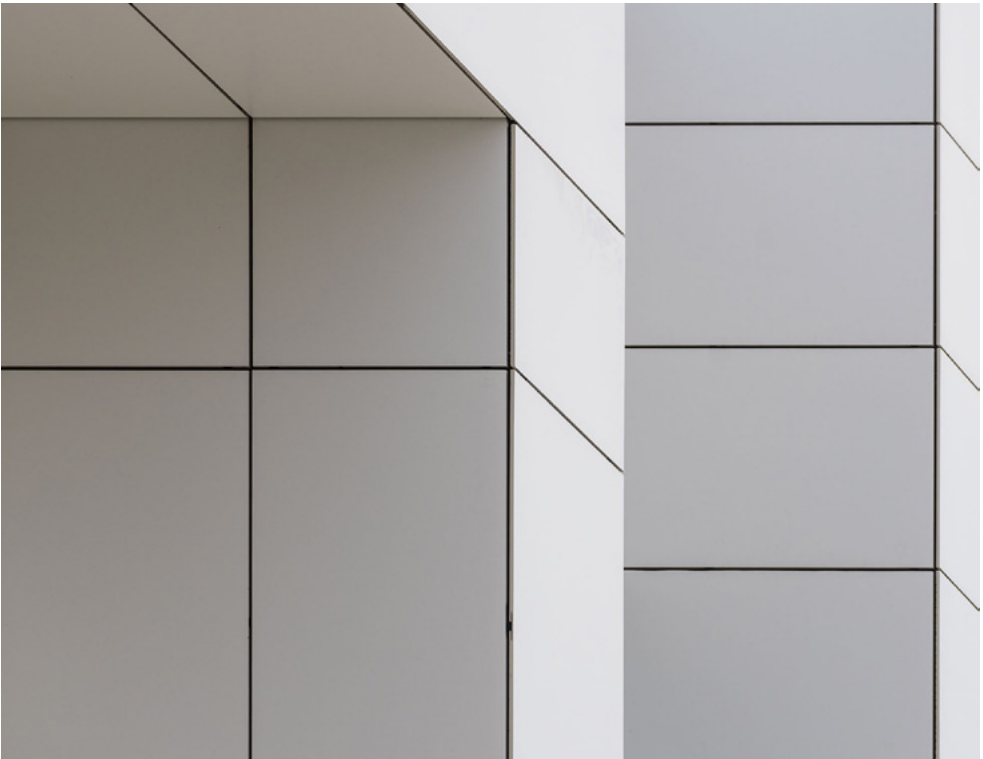
Please keep in mind those larger sizes can also be cut into halves or thirds to create the smaller size modules for your use.





# Content

- Panel Sizes <sup>8</sup>
- The Porcelain Collections <sup>10</sup>
- Stone Porcelain <sup>12</sup>
- Concrete Porcelain <sup>16</sup>
- Metal Porcelain <sup>18</sup>
- Decorative Porcelain <sup>20</sup>
- Technic Porcelain <sup>22</sup>
- Locations <sup>24</sup>
- Selected Projects <sup>28</sup>





# Panel Sizes

Our Active Stock exterior porcelain cladding panels listed in this catalog are available in **standard pre-set sizes that will vary for each color**. The sizes represented on this page are not available for all Active Stock colors listed in this catalog.

Please refer to the matrix for your preferred porcelain series to confirm the size(s) available for each color.

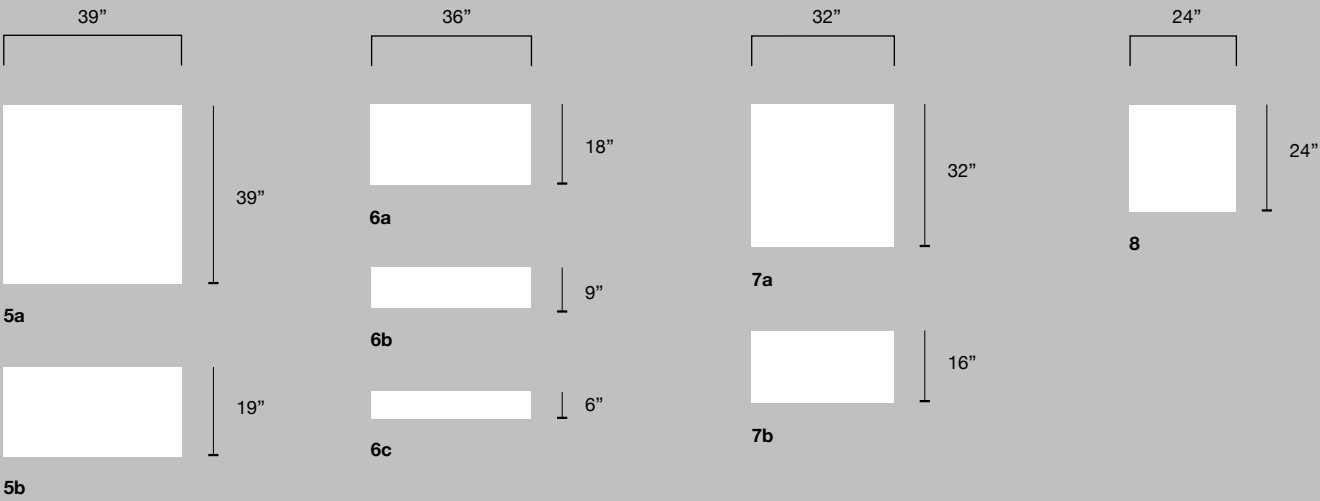
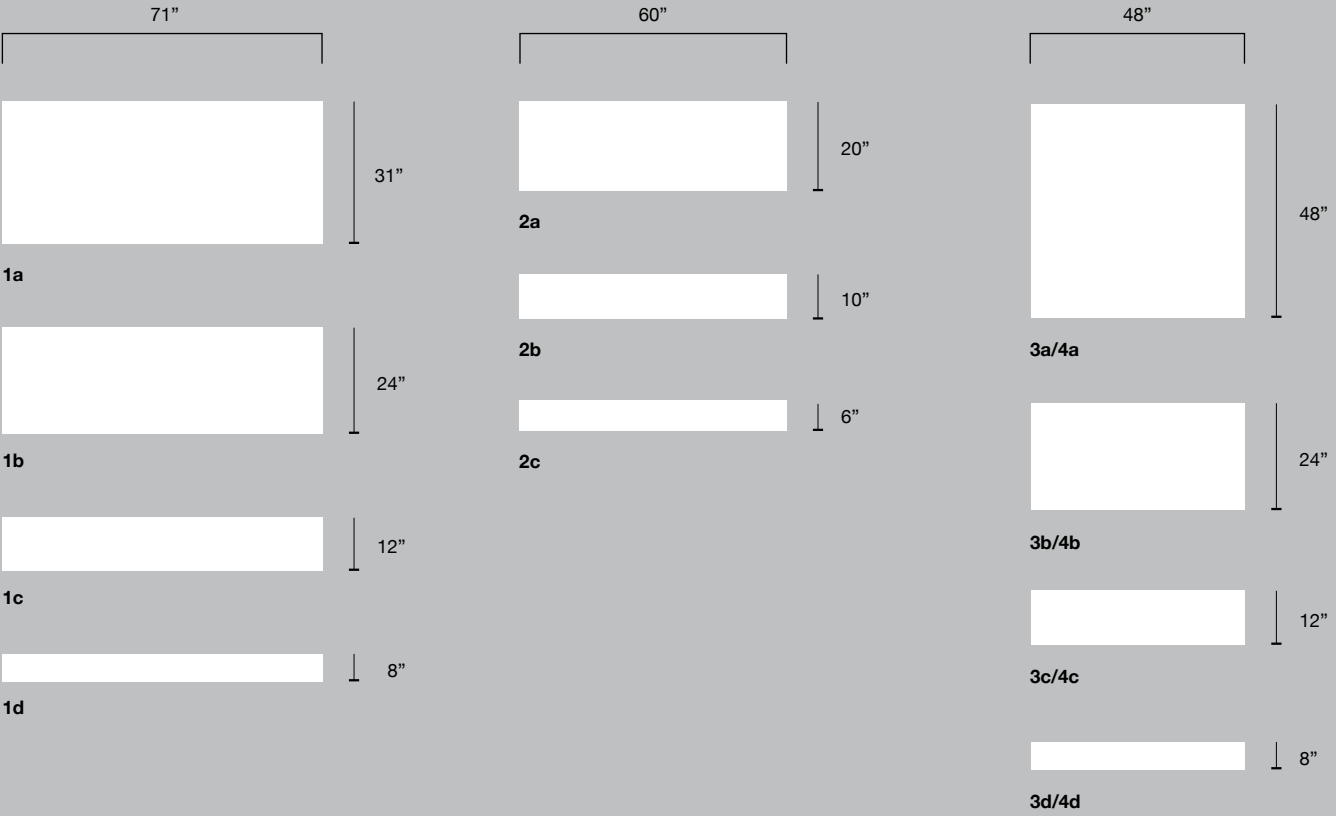
Remember, you can also economically get other sizes by cutting down those standard sizes in halves or thirds.

And, **if you have a larger project**, with more than 15,000 SF of exterior porcelain cladding... Don't forget! Your project is applicable for a Special Production – “Choose Your Color and Your Size”.

You can always go back to that main catalog or website. And pick from our entire collection of porcelain Colors and Finishes for your project.

## Exact Dimensions

Panel Index		Width		Height		Thickness	
		inches	mm	inches	mm	inches	mm
1a	Only for Stuc and Maker Colors	70-7/8"	1.800	31-1/2"	800	0,45"	11,5
1b		70-7/8"	1.800	23-7/16"	596	0,45"	11,5
1c		70-7/8"	1.800	11-9/16"	294	0,45"	11,5
1d		70-7/8"	1.800	7-5/8"	193	0,45"	11,5
2a		59-1/16"	1.500	19-11/16"	500	0,43"	11
2b		59-1/16"	1.500	9-13/16"	250	0,43"	11
2c		59-1/16"	1.500	6-1/2"	165	0,43"	11
3a		47-1/4"	1.200	47-1/4"	1.200	0,45"	11,5
3b		47-1/4"	1.200	23-7/16"	596	0,45"	11,5
3c		47-1/4"	1.200	11-9/16"	294	0,45"	11,5
3d		47-1/4"	1.200	7-5/8"	193	0,45"	11,5
4a		46-7/8"	1.190	46-7/8"	1.190	0,47"	12
4b		46-7/8"	1.190	23-3/8"	594	0,47"	12
4c		46-7/8"	1.190	11-5/8"	296	0,47"	12
4d		46-7/8"	1.190	5-13/16"	147	0,47"	12
5a		39-6/16"	1.000	39-6/16"	1.000	0,43"	11
5b		39-6/16"	1.000	19-10/16"	500	0,43"	11
6a		35-7/16"	900	17-11/16"	450	0,41"	10,5
6b		35-7/16"	900	8-11/16"	220	0,41"	10,5
6c		35-7/16"	900	5-5/8"	143	0,41"	10,5
7a		31-1/2"	800	31-1/2"	800	0,41"	10,5
7b		31-1/2"	800	15-3/4"	400	0,41"	10,5
8		23-7/16"	596	23-7/16"	596	0,44"	11,2





# Porcelain Facade Cladding Design

You - the architect – can get any and all porcelain cladding textures and colors, along with the best technical features and performance benefits. This is the **design freedom** a man-made engineered stone like technical porcelain gives you for your exterior facade designs.

## What other material can do that? Your porcelain facade design options...



The solid look of **Stone**... without the weakness of veining.



The substance of **Concrete**... with a more consistent finish.



The stylish look of a **Metal** finish... without warping or oil-canning.



A **Decorative** panel... for a more detailed cladding or design motif.



The **Technic** Series... when your design calls for solid, neutral colors.



**Stone** - Page 12

**Concrete** - Page 16

**Metal** - Page 20

**Decorative** - Page 22

**Technic** - Page 24



# Stone Porcelain Series

Technical porcelain is man-made, technically-improved stone -- made with only natural materials. It's like natural stone, just with better physical & mechanical characteristics. You'll get the rich beauty of natural stone cladding (like limestone, granite, marble, or whatever you imagine) with the superior strength, durability, and usability you can only get with technical porcelain on your building's exterior facade.

## Panel Sizes Available

Projects with **over 15,000 SF** of exterior porcelain cladding: Any available size shown in our main catalog or website.

Projects with **under 15,000 SF** of exterior porcelain cladding: Any of the available Active-Stock sizes shown here in this matrix.

Panel Size	1a	1b	1c	1d	2a	2b	2c	3a	3b	3c	3d	5a	5b	6a	6b	6c	7a	7b	8
								4a	4b	4c	4d								
Arizona Arena																		✓	
Arizona Caliza																		✓	
Austin Gray Dark									✓	✓	✓							✓	
Austin Natural									✓	✓	✓							✓	
Boston Bone		✓	✓	✓														✓	
Boston Stone		✓	✓	✓														✓	
Boston Topo		✓	✓	✓														✓	
Ceppo Acero																	✓	✓	
Ceppo Stone																	✓	✓	
Hannover Bone								✓	✓	✓	✓								✓
Hannover Silver								✓	✓	✓	✓								✓
Hannover Topo								✓	✓	✓	✓								✓
Image Cream																		✓	
Image Dark									✓	✓	✓							✓	
Image Silver									✓	✓	✓							✓	
Image White																		✓	
Karachi Acero								✓	✓	✓	✓								
Karachi Grey								✓	✓	✓	✓								



Panel Size	1a	1b	1c	1d	2a	2b	2c	3a	3b	3c	3d	5a	5b	6a	6b	6c	7a	7b	8
								4a	4b	4c	4d								
Lamu Acero												✓							
Lamu Caliza												✓							
Matika Acero												✓	✓	✓	✓				✓
Matika Bone												✓	✓						✓
Matika Silver												✓	✓						✓
Matika Topo												✓	✓						✓
Nairobi Bone Silk								✓											
Nairobi Ambar Silk								✓											
River Silver									✓	✓	✓								
Samoa Antracita																		✓	
Trento Grey								✓	✓	✓	✓								
Trento Sand								✓	✓	✓	✓								
Verbier Dark								✓	✓	✓	✓						✓	✓	✓
Verbier Sand								✓	✓	✓	✓						✓	✓	✓
Verbier Silver								✓	✓	✓	✓								✓





# Concrete Porcelain Series

With technical porcelain cladding panels, you can design the concrete look you want, with tighter, cleaner joints. And endless color, form, tones, and texture choices for your exterior facade design. And the open-joint porcelain cladding system is a true rainscreen system. That means it gives you and your client a much more energy-efficient wall than you can get with normal concrete construction.

## Panel Sizes Available

Projects with **over 15,000 SF** of exterior porcelain cladding: Any available size shown in our main catalog or website.

Projects with **under 15,000 SF** of exterior porcelain cladding: Any of the available Active-Stock sizes shown here in this matrix.

Panel Size	1a	1b	1c	1d	2a	2b	2c	3a	3b	3c	3d	5a	5b	6a	6b	6c	7a	7b	8
								4a	4b	4c	4d								
Bottega Acero		✓	✓	✓				✓	✓	✓	✓						✓		✓
Bottega Caliza		✓	✓	✓				✓	✓	✓	✓						✓		✓
Bottega White		✓	✓	✓				✓	✓	✓	✓						✓		✓
Gallery Grey								✓											
Gallery Sand								✓											
Loft Grey								✓											
Urban Acero												✓	✓	✓					✓
Urban Black												✓	✓	✓					✓
Urban Caliza												✓	✓	✓					✓
Urban Natural												✓	✓	✓					✓
Vela Black												✓	✓	✓					✓
Vela Grey												✓	✓	✓					✓
Vela Natural												✓	✓	✓					✓
Vela Smoked												✓	✓	✓					✓



# Metal Porcelain Series

With technical porcelain cladding panels, you get the look of wide, flat metal panels, with no worry of client calls asking why their building looks wrinkled. Exterior porcelain cladding panels also give you the flexibility and ease of customization you find with metal cladding panels. And you can get the clean, crisp edges you want on your panels without the worry of catching clothes or cutting skin.

## Panel Sizes Available

Projects with **over 15,000 SF** of exterior porcelain cladding: Any available size shown in our main catalog or website.

Projects with **under 15,000 SF** of exterior porcelain cladding: Any of the available Active-Stock sizes shown here in this matrix.

Metal Series

Remeber to check panel dimensions at **page 8**

Panel Size	1a	1b	1c	1d	2a	2b	2c	3a	3b	3c	3d	5a	5b	6a	6b	6c	7a	7b	8
								4a	4b	4c	4d								
Ferroker									✓	✓	✓							✓	
Ferroker Platino								✓	✓	✓	✓								✓
Steel Acero								✓	✓	✓	✓								✓
Steel Antracita								✓	✓	✓	✓								✓
Steel Bone								✓	✓	✓	✓								✓
Steel Corten								✓	✓	✓	✓								✓



# Decorative Porcelain Series

Are you looking for an exterior porcelain cladding panel to help you add texture, or decorative motifs and patterns to your building? Our Decorative Porcelain Series has a striking variety of design options for your next exterior facade project.

## Panel Sizes Available

Projects with **over 15,000 SF** of exterior porcelain cladding: Any available size shown in our main catalog or website.

Projects with **under 15,000 SF** of exterior porcelain cladding: Any of the available Active-Stock sizes shown here in this matrix.

Panel Size	1a	1b	1c	1d	2a	2b	2c	3a	3b	3c	3d	5a	5b	6a	6b	6c	7a	7b	8
								4a	4b	4c	4d								
Roma Marfil									✓	✓	✓								
Roma Noce									✓	✓	✓								



# Technic Porcelain Series

You’ll fall in love with the exterior porcelain colors and finishes the Technic family offers. Giving you aesthetic possibilities to take your facade design to the next level. With the all-natural, “baked-in” benefits that come from all our technical porcelain panels... Superior strength, durability, and usability you won’t find with other exterior materials, like stone, metal, or brick cladding.

## Panel Sizes Available

Projects with **over 15,000 SF** of exterior porcelain cladding: Any available size shown in our main catalog or website.

Projects with **under 15,000 SF** of exterior porcelain cladding: Any of the available Active-Stock sizes shown here in this matrix.

Panel Size	1a	1b	1c	1d	2a	2b	2c	3a	3b	3c	3d	5a	5b	6a	6b	6c	7a	7b	8
								4a	4b	4c	4d								
Extreme White									✓	✓	✓								✓
Nova		✓	✓	✓															
Technic Nieve									✓	✓	✓								



# Locations

You'll find us in 16 states. With 30 showrooms right now, we're growing and adding more. Plus, we have 6 logistics centers in the US to help make sure you get your exterior porcelain cladding panels onsite when you need them.

We're close to you...  
Get ahead of the design curve!

If you can't make the trip to one of our showrooms, don't worry, we'll come to you.

Or we'll send you whatever porcelain cladding samples or system components you need to help find the perfect fit for your next masterpiece.

Our flagship showroom is on 202 Fifth Avenue in New York, across the street from the landmark Flatiron Building. We own the building, so you know we're here to stay.

Give us a call today and let's see how we can work together.

Give us a call at  
1.866.FACHADA

Or email us at  
[hello@porcelanosafacades.com](mailto:hello@porcelanosafacades.com)





# Locations



## California

- **1 Anaheim**  
1301 S. State College Blvd Suite E  
Anaheim, CA 92806  
Phone 714.772.3183
- **2 Amirian Home / Hermosa Beach**  
219-221 Pacific Coast Highway  
Hermosa Beach, CA 90254  
Phone 424.390.4460
- **3 Amirian Home / Glendale**  
4116 San Fernando Rd  
Glendale, CA 91204  
Phone 818.500.8505
- **4 San Diego**  
8996 Miramar Road Suite 100  
San Diego, CA 92126  
Phone 858.322.6012

- **5 San Francisco**  
78 Division Street  
San Francisco, CA 94103  
Phone 415.593.7763

- **6 San Jose**  
391 East Brokaw Road  
San Jose, CA 95112  
Phone 408.467.9400

- **7 Walnut Creek**  
1401 N. Broadway  
Walnut Creek, CA 94596  
Phone 925.952.7430

- **8 West Hollywood**  
8900 Beverly Blvd., Suite 101  
West Hollywood, CA 90048  
Phone 310.300.2090

## Colorado

- **9 Denver Design District**  
601 S. Broadway Suite A  
Denver, CO 80209  
Phone 303.802.3210

## Connecticut

- **10 Riverside**  
1063 East Putnam Ave  
Riverside, CT 06878  
Phone 203.698.7618

## District of Columbia

- **11 Washington, DC**  
1000 Connecticut Ave NW  
Washington, DC 20036  
Phone 202.204.1655

## Florida

- **12 Doral / Miami**  
8700 N.W. 13th Terrace  
Miami, FL 33172  
Phone 305.715.7153
- **13 Design District / Miami**  
3705 Biscayne Boulevard  
Miami, FL 33137  
Phone 786.329.6753
- **14 Pompano Beach**  
3400 N. Powerline Road  
Pompano Beach, FL 33069  
Phone 954.968.7666

## Georgia

- **15 Buckhead Square / Atlanta**  
3255 Peachtree Road NE Suite B  
Atlanta, GA 30305  
Phone 404.973.0640

## Illinois

- **16 Luxe Home @ Merchandise Mart**  
222 Merchandise Mart Plaza Suite 149  
Chicago, IL 60654  
Phone 312.204.6220
- **17 Lincoln Park / Chicago**  
1001 West North Ave  
Chicago, IL 60642  
Phone 872.245.0120

## Maryland

- **18 North Bethesda**  
11500 Rockville Pike  
North Bethesda, MD 20852  
Phone 240.290.1120

## Massachusetts

- **19 Boston Design Center**  
1 Design Center Place, Ste. 505  
Boston, MA 02210  
Phone 617.963.7666
- **20 Chestnut Hill at the Street**  
55 Boylston Street, #5550  
Chestnut Hill, MA 02467  
Phone 617.608.0167

## New Jersey

- **21 East Brunswick**  
252 Route 18 North  
East Brunswick, NJ 08816  
Phone 732.613.1915
- **22 Paramus**  
65 Route 17 South  
Paramus, NJ 07652  
Phone 201.712.0556
- **23 Ramsey (Corporate Headquarters)**  
600 Route 17 North  
Ramsey, NJ 07446  
Phone 201.995.1310

## New York

- **24 Brooklyn - Industry City**  
33 35th Street Suite A-101  
Brooklyn, NY 11232  
Phone 929.239.3260
- **25 Manhattan (Flagship Showroom)**  
202 Fifth Avenue  
New York, NY 10010  
Phone 646.751.1180
- **26 Westbury**  
775 Old Country Road  
Westbury, NY 11590  
Phone 516.338.0097

## Pennsylvania

- **27 King Of Prussia**  
645 W. Dekalb Pike (US Rt. 202)  
King Of Prussia, PA 19406  
Phone 484.751.0050

## Texas

- **28 Austin**  
1000 E 50th St, Suite B  
Austin, TX 78751  
Phone 214.931.9610
- **29 Dallas - Decorative Design Center**  
1617 Hi Line Drive, Suite 415  
Dallas, TX 75207  
Phone 214.377.2327
- **30 Dallas**  
11639 Emerald Street, Suite 100  
Dallas, TX 75229  
Phone 469.310.2870
- **31 Houston**  
4006 Richmond Avenue  
Houston, TX 77027  
Phone 281.605.2770

## Virginia

- **32 Vienna**  
8200 Leesburg Pike  
Tysons, VA 22182  
COMING SOON

## Washington

- **33 Seattle**  
88 Spring Street #120  
Seattle, WA 98104  
Phone 206.673.8395

## Canada

- **34 Toronto**  
735 Caledonia Road  
Toronto, ON M6B 4B3  
Phone 416.782.5394
- **35 Vaughan**  
8905 Highway #50 Unit 2  
Vaughan, Ontario L4H 5A1
- **36 Montreal**  
6090 Ch.De La Cote-St-Luc  
Montreal, H3X 2G8  
Phone 438.221.8705



# Exterior Porcelain Facade Projects

You'll also find our exterior porcelain cladding panels featured on a variety of building use types. Retail, residential, multi-family, and commercial buildings of all kinds.

North, South, East or West, technical porcelain facade panels are the **perfect solution for any climate region.**

## Did you know?

- Porcelanosa has been present in the US for over 30 years, but only promoting interior porcelain during that time.
- Although we've only been using exterior porcelain cladding panels in the US for seven years, we've been using them since 1998 in Europe, Asia, the Middle East, and Africa.
- Since 2014, our exterior porcelain facade panels have been featured on over 70 projects in North America.
- Right now, our panels are installed (or being installed) on over 15 high-rise buildings in the Northeast. All of them over 20 stories tall.

You'll also find our panels featured on a variety of building use types. Retail, residential, multi-family, and commercial buildings of all kinds.

## Is it right for your project?

Whether you're re-cladding an existing building's facade or building a brand new one, you'll find great examples of each project type in our project portfolio.

And if you'd like to visit one of our projects, or would like to speak with a past client, **let us know**. We're proud of the growing list of architects and building owners we've helped.

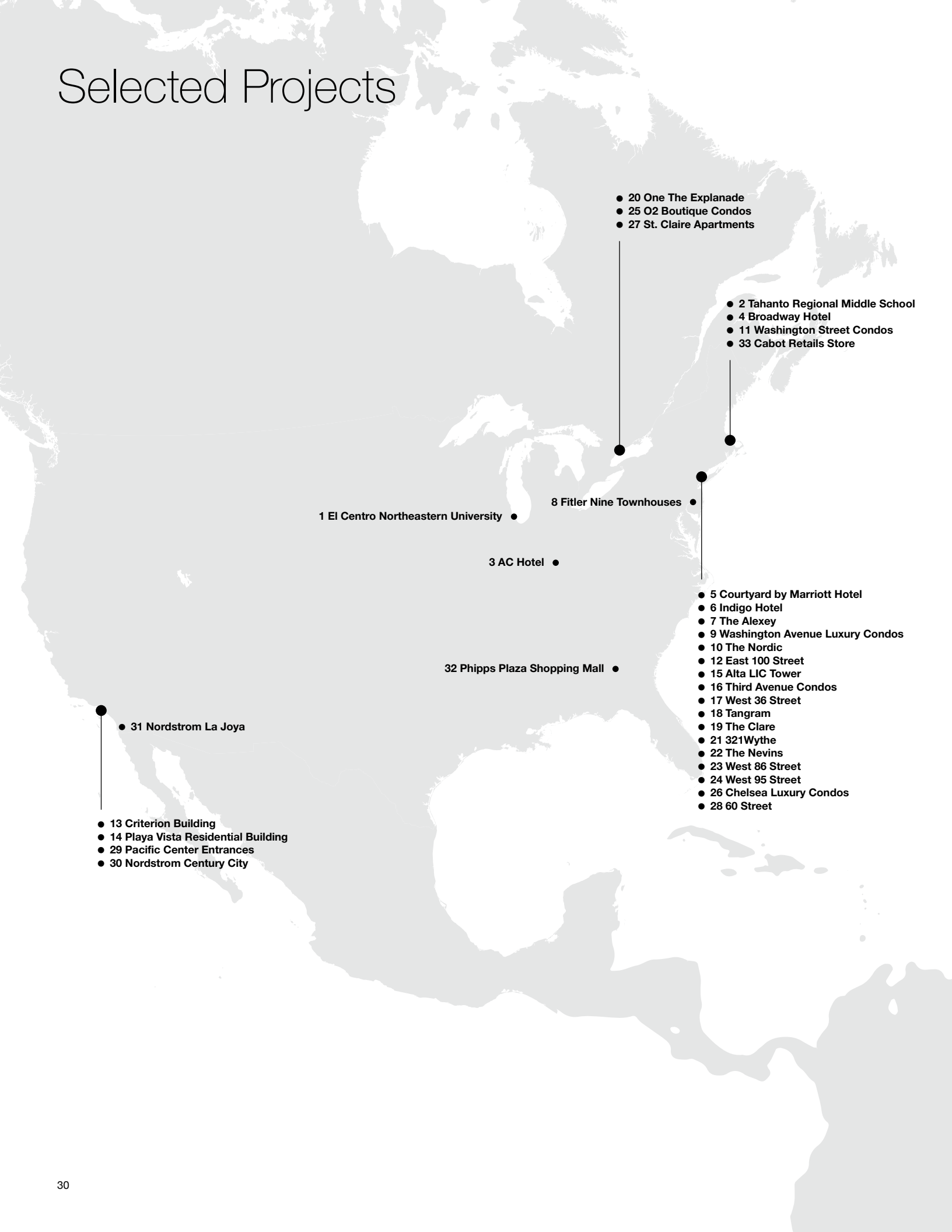
And, if you're not already on there, we look forward to the day we add you and your project to our list.

The Leyton, Manhattan, NY / Manuel Glas Architect





# Selected Projects



Market Segment	Map	Project	Location	Material	Stories
Educational	1	El Centro Northeastern University	Chicago, IL	On Black Nature	3
	2	Tahanto Regional Middle School**	Boston, MA	Ferroker Caldera & Ironker Cobre	2
Hospitality	3	AC Hotel	Cincinnati, OH	Cincinnati Crema	8
	4	Broadway Hotel	Boston, MA	XLIGHT Nox Corten	8
	5	Courtyard by Marriott Hotel*	Manhattan, NY	Town White & Niquel	29
	6	Indigo Hotel*	Newark, NJ	Avenue White Nature	14
	7	The Alexey	Brooklyn, NY	Tribeca Caliza & Ferroker Caldera	12
Multi-family	8	Fitler Nine Townhouses	Philadelphia, PA	Boston Topo & Bone	4
	9	Washington Avenue Luxury Condos	Brooklyn, NY	Boston Grafito & Bone	14
	10	The Nordic	Brooklyn, NY	Avenue Black & Boston Stone	6
	11	Washington Street Condos	Boston, MA	Max Grey Lappato & Nature	5
	12	East 100 Street	Manhattan, NY	Avenue Grey	7
	13	Criterion Building	Santa Monica, CA	Arizona Caliza	3
	14	Playa Vista Residential Building	Playa Vista, CA	Ferroker Caldera	4
	15	Alta LIC Tower*	Queens, NY	Town White Nature & Cubica	42
	16	Third Avenue Condos*	Manhattan, NY	Duna Grey Nature	30
	17	West 36 Street*	Manhattan, NY	Color 515	39
	18	Tangram*	Queens, NY	Ferroker Niquel	15
	19	The Clare*	Manhattan, NY	Glas	19
	20	One The Explanade*	Toronto, Canada	Toronto Caliza	36
	21	321Wythe*	Brooklyn, NY	Ferroker Titanio	21
	22	The Nevins*	Brooklyn, NY	Dover Arena	25
	23	West 86 Street*	Manhattan, NY	Custom Color	23
	24	West 95 Street*	Manhattan, NY	Piedra Borgonya	20
Offices	25	O2 Boutique Condos*	Toronto, Canada	Max Beige Lappato	15
	26	Chelsea Luxury Condos**	Manhattan, NY	On Black	8
	27	St. Claire Apartments**	Toronto, Canada	On Beige Nature	26
	28	60 Street	Brooklyn, NY	Samoa Antracita & Mirage Dark	5
	29	Pacific Center Entrances**	Torrance, CA	XL Lush White & Canada White Washed	9
Retail	30	Nordstrom Century City	Los Angeles, CA	Morse White Nature	3
	31	Nordstrom La Joya	San Diego, CA	Morse White Nature	3
	32	Phipps Plaza Shopping Mall**	Atlanta, GA	Arizona Caliza & On Brown	2
	33	Cabot Retails Store**	Boston, MA	Stuc White Nature	2
Sports	34	San Jose State University	San Jose, CA	Ocean Caliza	3

\* High-Rise

\*\* Re-Clad



Questions?

**Contact us at**  
1.866.FACHADA

**Or email us at**  
[hello@porcelanosafacades.com](mailto:hello@porcelanosafacades.com)

Find us at

**Website**  
[www.porcelanosafacades.com](http://www.porcelanosafacades.com)

**Headquarters**  
600 Route 17 North.  
Ramsey, NJ 07446