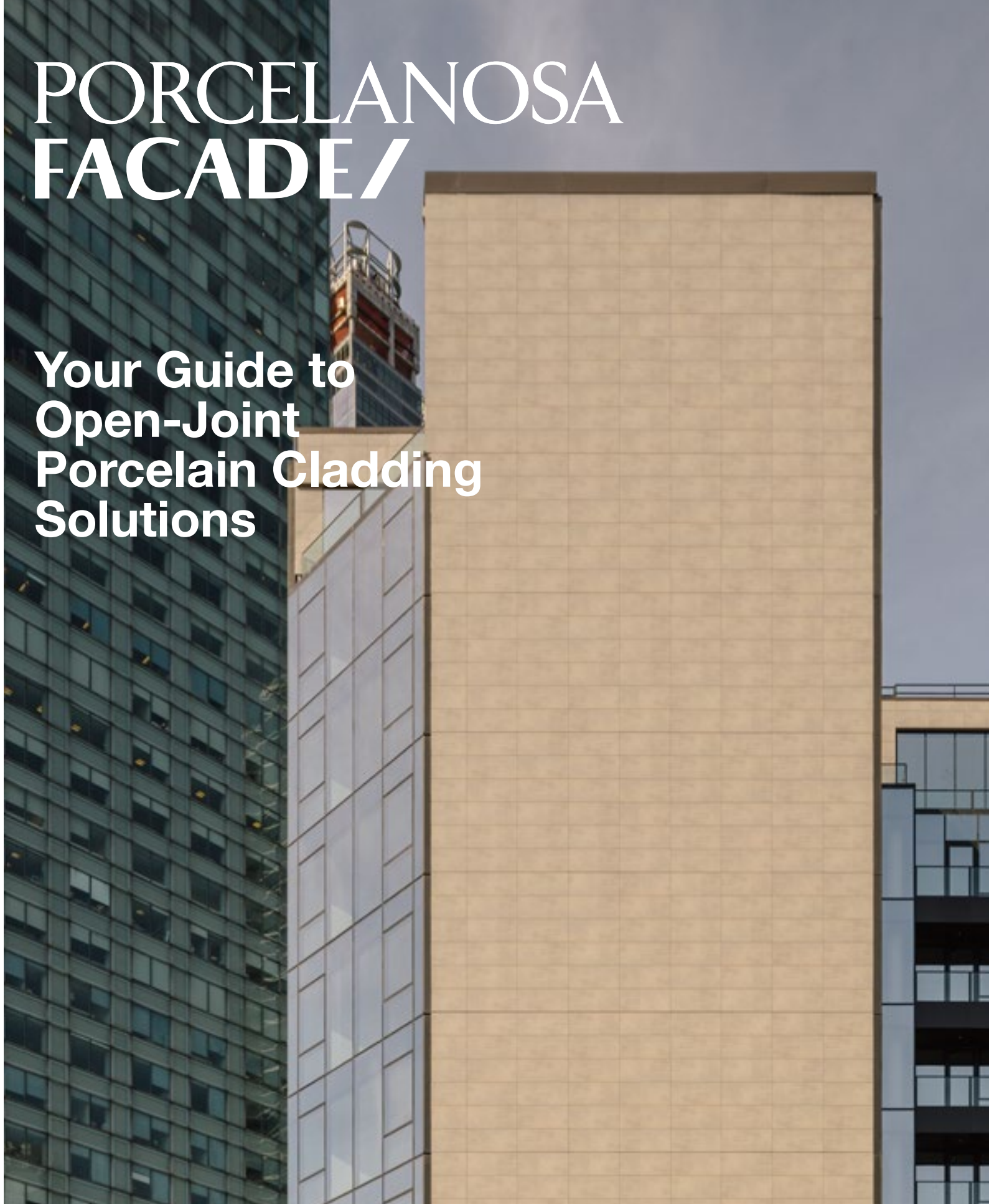


# PORCELANOSA FACADE/

**Your Guide to  
Open-Joint  
Porcelain Cladding  
Solutions**



# Why choose Porcelanosa Facades for your next building project?

Whether you're an **architect, designer, building owner, or developer...** You're looking for a solid partner with a reputation for quality architectural products.

You'll find Porcelanosa has been doing this around the world for over 45 years. First, with porcelain for your stunning interior settings. Then, since 1998, we've been a leader in porcelain cladding, helping architects create beautiful, durable porcelain facades throughout Europe, Asia, Africa, and the Middle East. And, for over 6 years, you've been using our unique cladding materials here in the US.

## Porcelain Cladding Experts

We help you design and provide a strong, safe, captivating exterior cladding for your clients. Whether your project is new construction, a remodel or renovation. Our team has an intricate knowledge of how our products will perform for you. As well as the best way to install them... Bringing you the porcelain cladding technology expertise you deserve.

We work with you **from concept to completion** to ensure your final project looks stunning.

Did you know? 90% of our team are architects -- **with a passion for architecture and beautiful buildings.** We'll work side-by-side with you to achieve your design intent. And, since there's no third party to work through... We can make unique things happen for you.

How?

We can change manufacturing to **make your "impossible" design ideas possible.** You see, we're not only distributors.

## Innovative Cladding Design

We're also the manufacturer. We control the whole process from beginning to the end. We are in direct contact and control the factory.

We know the manufacturing process. We can change our processes and parameters to help you achieve amazing things. Things other product reps can't, because they don't control the manufacturing.

From sketching your initial idea to final installation, we have the resources to help you execute successful projects of any size.

We invite you to use this catalog as your launching point. For inspiration and ideas. And when you're ready, we'll help you with the next steps. From **specification, best practices, detailing, schedule and cost management, to Design Assist...**

And if you don't find exactly what you're looking for in the catalog. Give us a call or send us an email.

**It's our mission and our passion to make your design a reality.**

All of us here at Porcelanosa Facades look forward to working with you soon.



Sincerely,  
**Ignacio Vidal Traver**  
Facades National Director





**It's our mission  
and our passion to  
make your design  
a reality**

# Content

Our History <sup>4</sup>  
The Team <sup>6</sup>  
Warranty & Certifications <sup>8</sup>

What is exterior porcelain  
cladding? <sup>10</sup>  
Our Facade System <sup>14</sup>  
Your Design Guide <sup>18</sup>  
Sizes <sup>22</sup>  
Design Assist <sup>24</sup>  
Technical Department <sup>28</sup>

The Porcelain Collections <sup>30</sup>  
Design Your Porcelain <sup>32</sup>  
Stone <sup>34</sup>  
Concrete <sup>56</sup>  
Metal <sup>68</sup>  
Decorative <sup>72</sup>  
Technic <sup>78</sup>  
Terracotta <sup>84</sup>  
Wood <sup>86</sup>

Selected Projects <sup>88</sup>  
Locations <sup>92</sup>





## Our History



*Porcelanosa was founded over 45 years ago in Villarreal, a small village by the Mediterranean Sea in Castellon, Spain. Since then, we've providing you with architectural and design solutions with unparalleled innovation, quality, and service. The family who originally founded Porcelanosa back in 1973 still runs it today under the same core values of work ethics and integrity.*

Construction of Porcelanosa Headquarters Office Building in Villarreal (Spain) 1973



# The Team

*“Good is the enemy of great. And that is one of the key reasons why we have so little that becomes great”*

*Jim Collins, Good to Great*

6 **Your building design idea deserves greatness. This is why we’ve assembled a team of leading facade experts to support you.**

**Combined 50 years of practice & experience.**

Engineers, architects, and installation experts round out a talented group ready to assist you in creating a beautiful, sustainable facade design.

**Passion for architecture & beautiful buildings.**

You’ll find 90% of our team of porcelain cladding experts is architects & engineers.



## What others are saying

*“We’ve found the Porcelanosa team is extremely good to work with. The people really know the capabilities of the system. They work very hard to understand the intent of your design and they come up with solutions that reflect your intent.”*

**Manuel Glas, Principal**  
**Manuel Glas Architects, New York, NY**

*From top to bottom*

*Carlos Ramos, Product Development / Ignacio Vidal Traver, Facades National Director / Shadette Ramos, Operations Manager / Borja Domenech, Field Installation Manager  
Ariana Botas, Technical Manager / Toni Buira, Factory Coordinator / Fabio Chica, Field Installation Assistant / Bartolome Gomez, Special Projects Project Manager  
Ana Perez, Project Manager (PM) / Judith Carbo, PM / Teo Berndt, Regional Façade Manager West Coast / César Valdez, Regional Façade Manager Northeast  
Alejandro Daras, Regional Façade Manager*

## 8 Peace of Mind



It's our mission and our passion to make your design a reality

We're proud to offer you our **10-Year Limited Warranty** on our Wall Panel System & Finish as seen here:

[www.porcelanosafacades.com/assets/Testing-Certificates/Warranty.pdf](http://www.porcelanosafacades.com/assets/Testing-Certificates/Warranty.pdf)

Giving you and your client peace of mind that we stand 100% behind our Open-Joint Porcelain Cladding System.

## 9 Third-Party Tested

Assurance that all our materials meet your quality performance expectations.



### ICC-ES Report #ESR-3343

This means you and your client know you're choosing an innovative exterior cladding product that complies with building codes.

We are the FIRST porcelain panel rainscreen façade system to receive ICC-ES certification

Compliance with:

- IBC 2009, 201 & 2015
- California Green Building Standards Code
- California Building Code
- Florida Building Code

### Florida Product Approval – FL-20391

The Florida Building code requires all exterior wall panels be tested and registered with the State through their product approval program.

You'll find out exterior porcelain cladding system's TER (Technical Evaluation Report) on our website:

[www.porcelanosafacades.com/resources](http://www.porcelanosafacades.com/resources)

### American Architectural Manufacturers Association (AAMA) – AAMA 509-9

This assures you our system has been successfully tested under the AAMA 509-9 standard "Voluntary Test and Classification Method of Drained and Back Ventilated Rain Screen Wall Cladding Systems."



# What is exterior porcelain cladding?

10 There's no easy way to say this. So, here it is... Exterior porcelain cladding panels, from the technical standpoint, is the **BEST** material for your exterior architectural facades.

## How can we say that?

To be clear, we're not talking about ceramic tile. Or even the standard porcelain tile we recommend for your building's interiors.

We're talking about **technical porcelain**. And that isn't just some fancy marketing label. It means we take your exterior porcelain cladding panels to another level by firing each panel so it **absorbs no more than 0.1% of water**. Making it virtually impervious to moisture.

Compare that to tile industry standards for other tiles:

- Porcelain water absorption:  $\leq 0.5\%$  (which is great)
- Ceramic water absorption: between 0.5% - 3.0%

That means, technical porcelain panels don't absorb water. So you and your client don't have to worry about thermal expansion & contraction, freeze-thaw, or efflorescence issues. Our porcelain cladding system is **ideal for all climate zones** your projects require.

### What others are saying

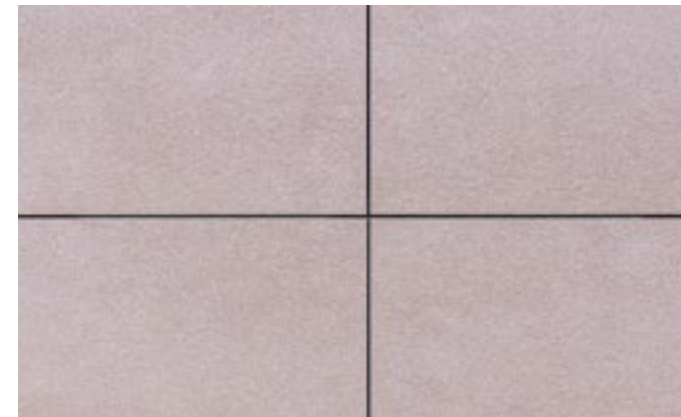
*"Their quality is really number one. From the porcelain panels as the finish, to their complete support system. They provide a complete rainscreen façade system. Not every cladding company I've looked at provides a full system. Porcelanosa provides from the attachment to the building, to the support system itself, to the finished porcelain panel."*

**Ehab Elsherif**, Senior Associate  
**Fischer + Makooi Architects**, New York, NY



## Exceeds all ICC Fire Resistance Requirements

Porcelain cladding is a natural non-combustible material. When coupled with our open joint cladding system, you'll meet all fire code requirements, including ASTM E119, NFPA 285 and ASTM E136



## Non-Porous and Graffiti-Proof

With 0.1% water absorption, our porcelain panels are impervious. So, you don't need any protective coatings. And you don't need any special solvents to clean graffiti... just use denatured alcohol and the graffiti easily wipes away.



## Made from earth-sourced materials

You get a truly weather-proof material that's beautiful and long-lasting with porcelain cladding panels we engineer from the earth. We source our raw materials (like kaolin, quartz, and feldspar) from the areas surrounding our advanced manufacturing facilities in Castellon, Spain. Providing a low carbon footprint, and a finished exterior product for your building's facade that's engineered to endure.



## Freeze-Thaw Proof

Our exterior porcelain panels exceed the requirements of ASTM C1026 for freeze-thaw cycling, without cracking. Even cut, exposed areas such as kerf saw cuts, mitered corner joints, or open corners don't need sealing or coating. That means one less worry for you and less building maintenance headaches for your client.



12

## An all-weather material

Exterior porcelain cladding panels will stand up to the harshest of conditions. As part of your rainscreen wall system, porcelain cladding helps keep your building interior warm in cold temperatures. And in the hot summers, porcelain helps keep your building cool.

## Factory-Rectified

We rectify your porcelain panels at the factory before they leave the production line. "Rectified" means we grind the panel's edges after firing, so the size is more precise. This also means no shrinking or expansion of the panel after it's installed on your building's exterior facade.

## Maintenance-Free

The high density and extremely low absorption rates of porcelain cladding panels doesn't allow dirt or graffiti to stick to them. Installed in an open-joint cladding system, there is no efflorescence, no drips, and no stains. So your cladding is maintenance-free.

## True Aesthetic Versatility

With porcelain cladding, you can achieve classic, traditional, modern, decorative, or distinctive looks for your exterior facades. And you can even design your own porcelain panel. Our porcelain panels are tougher than stone with greater design flexibility. You get superb technical performance with any look you create. From rich textured woods to shiny metallics, to natural stone and concrete finishes. Your design freedom is here.

13



## Does not rot or delaminate

Our porcelain cladding panels are not layered or made from a wet slurry. Our modern manufacturing process ensures your exterior porcelain panels are highly dense, strong, and completely resistant to rot or delamination.

## High UV Resistance

The ingredients of our porcelain panels and our patented manufacturing process gives your building's exterior facade a finish that's resistant to UV degradation for the lifetime of the panel.

## Thermally-Efficient

Our open joint porcelain cladding system is thermally-broken. We've designed it to meet the strictest IECC guidelines. With effective R values of up to 23.5 and U-factors as low as 0.038, our exterior cladding system lets you design freely knowing you'll meet the latest energy code requirements.

## Critter Proof

There are no materials in our Open Joint Porcelain Cladding system to attract insects or woodpeckers. So critters won't want to settle in your building's facade.



# Our Facade System

14 You'll find many cladding manufacturers only provide the cladding itself. Leaving the support framing and attachment for you to figure out. Don't worry – that's not how we do things... Porcelanosa Facades has you covered with our complete Open Joint Porcelain Cladding System ("**OJ-PC system**").

That means **less risk for you and the building owner**, since one manufacturer – Porcelanosa Facades – provides and warranties your entire exterior the cladding and support system. (That's a **10-year warranty** to give you peace-of-mind that we stand behind the whole system 100%.)

## What others are saying

*"What we found especially attractive about Porcelanosa Facades was that they were providing a fully engineered cladding system, including shop drawings, and they were precutting the panels to fit the complex geometry. They were still very competitive with the cost of other ventilated facades as well, which made it an especially attractive solution. Also, you get the added value that the porcelain panels are a very durable product that is scratch and graffiti resistant - which was important because this was a school building. The aesthetic - it's a very sharp looking system."*

**Cosmin Vrajitoru, President**  
**ARCHEO Design Studio, Chicago, IL**

Our OJ-PC system has been used and tested for over 20 years - on hundreds of project types and conditions. So you can sleep at night knowing it'll work for you. Freeing you up to focus on those 1,000 other decisions you need to make.

Read on to learn more...

## An Effective Drainage, Thermal & Acoustical Solution

*"A ventilated tile façade can reduce a building's energy consumption 20-30% due to the chimney effect it creates between the structure and the cladding. Hot air is evacuated in summer, and insulation is more effective in winter."*

**TCNA** (Tile Council of North America)

One of your envelope design goals for your client's building is to ensure maximum energy savings and noise reduction to your buildings.

Our OJ-PC system provides you with an ideal solution -- while preserving the beauty of the Porcelanosa Facades exterior porcelain cladding panels. And its design allows you to use the Open Joint Porcelain Cladding system on new construction or to renovate or re-clad an existing building.

The Alexey Luxury Residencies in Brooklyn NY  
**ND Architecture & Design**



The system is classified as a Drained/Back Ventilated Rainscreen. Its open joint porcelain cladding panels, continuous insulation and thermally-broken support system help you:

- Keep bad weather out to **reduce mold** through efficient heat and moisture removal -- **improving indoor air quality** for the building users, and mitigating your building structure's deterioration.
- Achieve R-values from 9.1 to 24 - retaining more heat in colder months, keeping cooler in warmer months.
- Absorb outside noises by 10-15 dB – another way you can contribute to healthier indoor environments.



## Engineered to Perform

Over the years, we've engineered the Open-Joint Porcelain Cladding System ("OJ-PC system") to help you meet the increasing code demands:

- Allowing for thermal expansion movement, so it's ready for your most extreme conditions.
- Resisting wind loads up to 213 mph to protect your building's occupants and valuable contents.
- Self-leveling, making the system easier for installers, without requiring shimming or other dangerous practices.
- Its self-supporting system weighing only 6 lbs/sf to minimize the impact on your building's structure.

You'll also get a Class A Fire Rating, meaning you can use the system as an interior wall finish, while meeting NFPA 285 for your exterior finish.



## Design Flexibility

The OJ-PC system offers you design flexibility to achieve the look you need for your building's exterior facades. Our goal was to design a cladding system that allows you to bring all your design ideas and inspirations to life.

The system can be modified and/or customized for any project type you have on the boards - from residential and commercial projects to multi-family or high-rise buildings. We have a technical team dedicated to helping you find the proper porcelain cladding solution for your facade design.

Your project is unique. So please contact us to see all the ways we can help you make your exterior cladding design go more smoothly.

- The versatility of ventilated facades made of porcelain...
- The environmentally-friendly principle behind its chimney effect...
- And the superior performance of exterior porcelain panels...

All this combines to make our Open-Joint Porcelain Cladding System the perfect exterior envelope option for a new or existing building. By creating several protective layers around your building's exterior envelope.

And, since our OJ-PC system is all provided by a single manufacturer, you get a turnkey solution with a better warranty.



# Your Design Guide for Open-Joint Porcelain Facades

18 This Design Guide will help you determine what's possible... For you to design the most cost-effective open-joint porcelain façade system for your current and future building projects.

## Color-body or Through-body ?

Do you choose “color-body” or “through-body” porcelain? Which porcelain type do you prefer? How do you prefer we get the color/finish of your panels? What's the difference?

It's important to note, the difference between these types of exterior porcelain panels is only aesthetic. From the technical standpoint, they are both equals.

### Color-body porcelain

The color comes from a surface-applied finish over the panel body. Also called glazed-body porcelain, this is a more decorative solution. But it could be a more cost-effective option if you want to customize your design. And, with our color-body technology today, you don't see a major contrast between the edge and the visible surface of the porcelain panel.

### Through-body porcelain

The color comes from the panel's body itself. Its ingredients define the aesthetics. What you see on the edge of your porcelain panel is what you see on the surface.

## Made from the earth

Technical porcelain is man-made stone. You design your porcelain cladding panels to take any aesthetic... and we make them while keeping all the best technical features. And there are three key elements to its successful process:

- Higher quality of the raw materials
- Manufacturing pressure of the panels
- Baking temperature

We use materials from the earth and engineered to give you the best advantages of all other cladding options, like metal, stone, and brick. Checking all the boxes for the best technical features you're looking for...



Joint pattern design / Nordstrom Century City in LA / CallisonRTKL

1

## Active Stock Production

### Readily-available

With so many possible color and finish combinations for your porcelain cladding design, having them all readily available for any project size would be a little crazy-making. And unsustainable.

Does your façade have less than 15,000\*\* square feet of porcelain cladding production? If so, you can select from our active stock of colors & sizes.

Here's how to choose your active porcelain color:

- Go to the Porcelanosa Facades website: [www.porcelanosafacades.com](http://www.porcelanosafacades.com)
- Select the “colors” menu, which takes you to our collection of colors.
- Filter by “Active Stock” items.
- You can also download the Active Stock Catalog PDF document from the resources tab.

\*\*This figure varies upon your project's application of the cladding. So be sure to check in with us.



Curved porcelain cladding / AC Hotel in Cincinnati OH / CR Architecture + Design



Porcelain cladding with mitered corners at The Clare Building / Manuel Glas Architect

2

## Special Production

Choose Your Porcelain  
and Your Size

If your façade design calls for over 15,000\*\* square feet of porcelain cladding panels, you have two more options to consider...

The first option is our special production. You can choose between the many existing colors in our catalog. And we'll form it into the mold size that best suits your façade while maximizing and meeting your budget.

And remember, "special production" doesn't mean "more expensive"...

We simply take an existing finish "recipe" we have and put it in a standard mold size we already have. Optimizing your exterior facade design intent.

Reach out and ask us about our Design Assist service. We'll partner with you to develop a cladding system that fits your design intent and budget.

\*\*This figure varies upon your project's application of the cladding. So be sure to check in with us.

3

## Custom Production

Your Unique Design

This final option is our "**Design Your Porcelain**" Program.

You can read more details about this program on page 32 of this catalog...

We'll help you design your own unique, signature façade panels. If this sounds like what you're looking for on your next project, be sure to check out our program.

Take **your building's exterior facade design** to the next level by designing your unique cladding material.

Check out more about "**Design Your Porcelain**" Program on page 32



# Sizes

22 Our exterior porcelain cladding panels are produced with standard mid-size molds in various sizes (i.e. 6'x2', 4'x4', 4'x2', etc.). Selecting from these standard mold sizes is your more economical choice. Another tip to keep your costs down, and get other sizes is to choose a size that cuts down these standard mold sizes in halves or thirds.

All exterior porcelain panel colors you see in this catalog are available in any of the sizes\*\* shown in the opposite page. When your project has a minimum quantity of 15,000 square feet of porcelain production. This figure varies upon your project's application of the cladding. So be sure to check in with us:

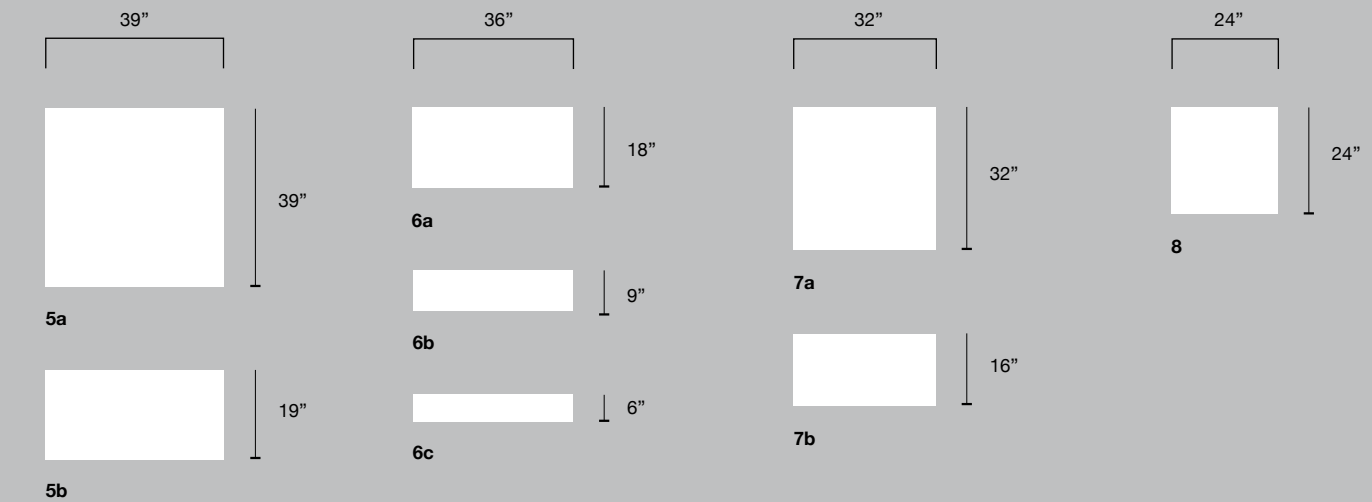
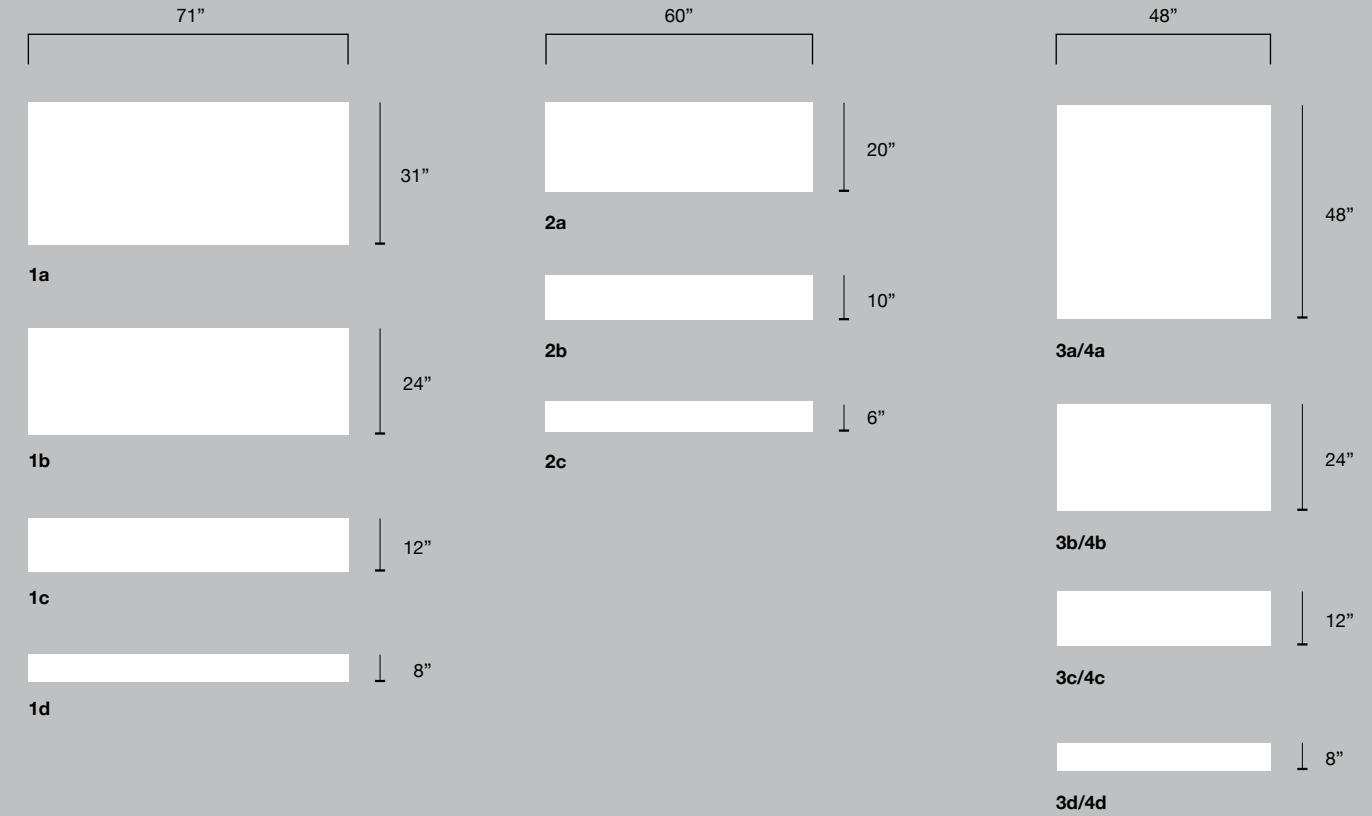
## Exact Dimensions

Panel Index	Width		Height		Thickness		
	inches	mm	inches	mm	inches	mm	
<b>1a</b>	70-7/8"	1.800	31-1/2"	800	0,45"	11,5	
<b>1b</b>	70-7/8"	1.800	23-7/16"	596	0,45"	11,5	
<b>1c</b>	70-7/8"	1.800	11-9/16"	294	0,45"	11,5	
<b>1d</b>	70-7/8"	1.800	7-5/8"	193	0,45"	11,5	
<b>2a</b>	59-1/16"	1.500	19-11/16"	500	0,43"	11	
<b>2b</b>	59-1/16"	1.500	9-13/16"	250	0,43"	11	
<b>2c</b>	59-1/16"	1.500	6-1/2"	165	0,43"	11	
<b>3a</b>	47-1/4"	1.200	47-1/4"	1.200	0,45"	11,5	
<b>3b</b>	47-1/4"	1.200	23-7/16"	596	0,45"	11,5	
<b>3c</b>	47-1/4"	1.200	11-9/16"	294	0,45"	11,5	
<b>3d</b>	47-1/4"	1.200	7-5/8"	193	0,45"	11,5	
<b>4a</b>	Only for Stuc and Maker Colors	46-7/8"	1.190	46-7/8"	1.190	0,47"	12
<b>4b</b>		46-7/8"	1.190	23-3/8"	594	0,47"	12
<b>4c</b>		46-7/8"	1.190	11-5/8"	296	0,47"	12
<b>4d</b>		46-7/8"	1.190	5-13/16"	147	0,47"	12
<b>5a</b>		39-6/16"	1.000	39-6/16"	1.000	0,43"	11
<b>5b</b>		39-6/16"	1.000	19-10/16"	500	0,43"	11
<b>6a</b>		35-7/16"	900	17-11/16"	450	0,41"	10,5
<b>6b</b>		35-7/16"	900	8-11/16"	220	0,41"	10,5
<b>6c</b>		35-7/16"	900	5-5/8"	143	0,41"	10,5
<b>7a</b>		31-1/2"	800	31-1/2"	800	0,41"	10,5
<b>7b</b>		31-1/2"	800	15-3/4"	400	0,41"	10,5
<b>8</b>		23-7/16"	596	23-7/16"	596	0,44"	11,2

\*\*Except for **Wood Porcelain Series** for which you can check its catalogue with list of available sizes at [www.porcelanosafacades.com/resources](http://www.porcelanosafacades.com/resources)

Give us a call at  
1.866.FACHADA

Or email us at  
[hello@porcelanosafacades.com](mailto:hello@porcelanosafacades.com)



If your design calls for **15,000\*\* square feet** of porcelain cladding production you can choose any of the sizes shown on **page 23**, otherwise you can check our Active Stock Catalog with available sizes at [www.porcelanosafacades.com/resources](http://www.porcelanosafacades.com/resources)

\*\*This figure varies upon your project's application of the porcelain cladding. So be sure to check in with us.

# Design assist

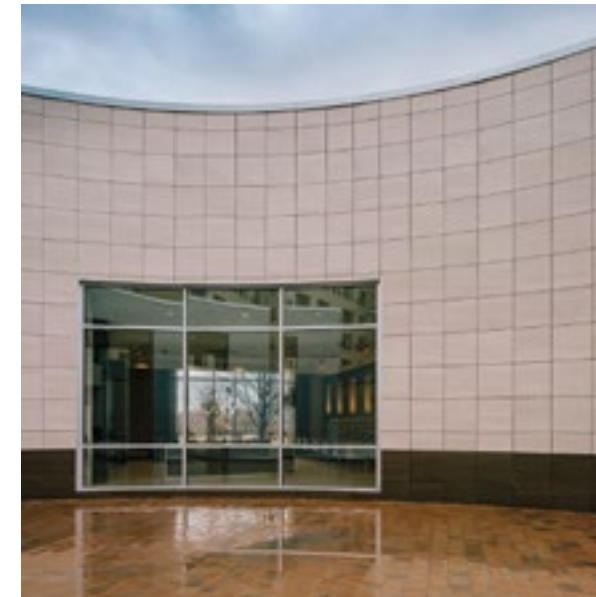
## 24 Are you losing your design intent?

Today's building envelope designers are being forced to evolve.

Why? Because building code requirements and client expectations are changing and becoming more demanding. And, because designing without certainty of cladding material costs hands over your design intent to contractors.

In fact, if you have a project with exterior cladding, or recladding, you're next supplier must be an expert in building envelopes. And they must be very clear on their own system's capabilities.

## This summary is an Introduction to our Design Assist Service.



AC Hotel in Cincinnati OH

We partner with you to develop an exterior porcelain cladding panel system that fits your facade design intent. While meeting the functional needs and any other requirements.

Our in-house design and engineering team of porcelain cladding experts will give you the support you need from design through construction.

The expertise we bring to your project as a Design Assist partner is critical **to ensure your facade cladding design intent is achievable.** Helping you:

- Get full technical certainty about what's possible and what's not.
- Learn tips & tricks on designing efficiently & technically feasible
- Protect your design by finding out your exact exterior porcelain cladding system cost
- Get cost certainty ahead of everyone, especially ahead of who controls the budget (and therefore your design)
- Save time & money by re-gaining control of your design (less drawing and re-drawing)
- Identify & deal with code issues **before** construction starts.

## We help your project team:

- Find the **best facade design strategies** for your project
- Understand **best practices** for porcelain panel cladding design
- And get **technical help** for project success with:
  - a feasible (and economical) panel layout
  - optimized waste
  - details & specs for your supports and interfaces

Your Team





# How to Work with a Design Assist Partner

Whether you're new to open joint porcelain cladding systems, an old pro at working with us, or just need to protect the design vision for your building's exterior facade, there's a simple process. Here are the basic steps to get you going.

Alta LIC Tower in Queens, NY, Town White Nature & Cubica

## 26 Schedule a free assessment

### 1. Discovery

We dig in to make sure we "get" your façade design intent for performance & aesthetics.

### 2. Take-Off

We do a take-off of your porcelain cladding's net area to figure out available colors & sizes.

### 3. Strategize Options

So many colors & sizes can make your head spin. We'll help nail down your concept to enhance your architectural facade's design and performance.

## We'll take a look at the drawings

### 4. Best Practices

"How do you handle copings and window returns?" Let's straighten out the details. Tap into our knowledge of designing & installing porcelain cladding systems.

### 5. Optimize Design

Compare side-by-side porcelain cladding panel layouts, along with costs & details, for your design consideration. Then tweak your cladding system for cost effectiveness & energy-efficiency.

### 6. Minimize Waste

How do we determine waste? We draw. If you don't draw, you guess. And if you guess – it's more expensive. Because uncertainty is expensive, and they have to cover themselves. When we draw we bring you certainty.

## We work up accurate detail drawings & cost estimates...

If you have time in your project schedule and want this added certainty, the (highly-recommended) last steps of working with us as your Design Assist Partner are...

### 7. Specific Cost Estimate

This empowers you to protect your exterior facade design – you get the project specific material price directly from the manufacturer. This alone can save your client around \$10 per square foot of porcelain cladding.

### 8. Proposal Drawings

A complete set of proposal drawings with our material quote. This added information and certainty, is your backup to ensure the installer's quoted costs are on target.

Now that you're here and thinking about it, why not reach out and give us a call. Let's see if Design Assist is the right choice for your project.

Contact us now at  
**1.866.FACHADA**

Or email us at  
**hello@porcelanosafacades.com**

## What others are saying

*"What's great with Porcelanosa Facades is they have a system and an entire in-house team made up of a lot of architects, so it's very easy to communicate. Their professionalism, attention to detail, and sense of teamwork make all the difference - everybody working in the same direction to make the project successful, rather than just a supplier supplying their tiles."*

**Isaac-Daniel Astrachan, AIA, LEED AP, Principal**  
**Stephen B. Jacobs Group, New York, NY**



Your Design Assist Team at work

## How much does Design Assist cost?

This one's on us. That's right... We offer you complimentary Design Assist services. As long as you meet two prerequisites:

1. Your project is in the early design phases. Late SD or early DD is best... But, if you're already in Construction Documents, let's talk and see how we can help.
2. You and your client have a genuine intent of using exterior porcelain cladding panels on your project.

That's it. If you've got those two things covered, we've got the Design Assist costs covered.





When you choose to work with us on your next exterior facade project, we view and treat every client as **a valued relationship**. And this continues through the shop drawings -- full and continued assistance from our team of porcelain cladding experts.

When you have the same company who helped you through the Design Assist doing the shop drawings (like you do when you work with us here at Porcelanosa Facades) ... You get more accountability. We help you design and detail your project, so you can be confident knowing we're on the same page.

When you have the same company who helped you through the Design Assist doing the shop drawings... You get more accountability. We helped you design and detail your project, so you can be confident knowing we're on the same page.

Our business is the cladding system materials. That means we will invest more time in your facade project to make sure you get exactly what you expect and deserve.

Our technical department consists of façade experts with experience throughout the world in all facade systems. And we are a leader in porcelain cladding technology. When you have us on your team, you get personalized and permanent technical support to develop the best facade solution for your projects.

## Shop Drawings & Engineering

The single best way to make sure your next project's exterior cladding system installation goes smoothly is accurate shop drawings that meet the specs.

At Porcelanosa Facades, when we develop and submit shop drawings to you and your contractor, our goal is to:

1. Show our understanding of where you'll install the porcelain cladding, while giving information about finishes, colors, and other project-specific details.
2. Provide the shop with the information and large-scale details needed to fabricate the porcelain panels to meet the custom needs of your project.
3. Supply the installers the details they need to install the entire cladding system properly.
4. Furnish you with details for coordinating with other interfacing materials or installers.

Architects - like you - are looking for better ways to ensure your exterior facade projects succeed. Make sure you work with a company who understands what you need and delivers on it every time.

If this sounds like what you've been missing on your projects, let's talk.

Give us a call at  
1.866.FACHADA

Or email us at  
[hello@porcelanosafacades.com](mailto:hello@porcelanosafacades.com)

... and let's see if we're a good fit for your next project!



# Porcelain Facade Cladding Design

30 You - the architect – can get any and all porcelain cladding textures and colors, along aesthetics with the best technical features and performance benefits. This is the **design freedom** a man-made engineered stone like technical porcelain gives you for your exterior facade designs.

## What other material can do that? Your porcelain facade design options...



The solid look of **Stone**... without the weakness of veining.



The substance of **Concrete**... with a more consistent finish.



The stylish look of a **Metal** finish... without warping or oil-canning.



A **Decorative** panel... for a more detailed cladding or design motif.



The **Technic** Series... when your design calls for solid, neutral colors.



The warm, classic look of **Terracotta** without the danger of your cladding deteriorating or failing over the years.



The warmth of **Wood**... without the worry of yearly maintenance.

**Stone** - Page 34

**Concrete** - Page 56

**Metal** - Page 68

**Decorative** - Page 72

**Technic** - Page 78

**Terracotta** - Page 84

**Wood** - Page 86



# Design Your Porcelain

Let's just say, after looking through the 300+ porcelain colors and textures in our Stone, Concrete, Metal, Wood, Technic and Decorative Porcelain Series...

...You still haven't found the just-right **perfect** porcelain façade panel.

It happens. We get it. After all, we're designers, too. That's why we've created the "**Design Your Porcelain**" Program.

## Now you – the architect – can design your own stone!

You can create a unique, signature porcelain panel no other building or designer has...

Giving your client's building facade an exclusive look you'll both be proud of. But not necessarily at the higher costs usually associated with "custom"...

## Take your building facade design to the next level by designing your own unique porcelain cladding material

If you'd like to learn more about the **Design Your Porcelain** Program...

Give us a call at  
1.866.FACHADA

---

Or email us at  
[hello@porcelanosafacades.com](mailto:hello@porcelanosafacades.com)

---



# Stone Porcelain Series

34 You can have the solid look of stone cladding - without the weakness of veining. With our technical exterior porcelain panels, you'll get solid consistency throughout each panel, so you get the most reliable strength.

## Superior performance and beauty with 100% natural materials

Technical porcelain is man-made, technically-improved stone -- made with only natural materials. It's like natural stone, just with better physical & mechanical characteristics.

You'll get the rich beauty of natural stone cladding (like limestone, granite, marble, or whatever you imagine) with the superior strength, durability, and usability you can only get with technical porcelain on your building's exterior facade.

## Lightweight, clean & tight

Plus, you get the benefit of a more compact wall profile with our 13/32" thick technical porcelain cladding panels. (natural stone panels are 3/4" to 2" thick).

And their lighter weight (a fraction of natural stone panels) means less impact on your building's structure. That's a big plus for new construction and existing building facade renovations.


## "How do you achieve the aesthetic of a stone porcelain panel?"

The digital images of the stone selected are virtually endless. In other words, there will be no repetition in the stone panels across your building's facade.


You can also adjust the tonality of each panel. Giving you the natural, random pattern you want across your facade design.




Argenta Antracita




Arizona Antracita




Arizona Arena




Arizona Caliza



Arizona Stone



Assuan Brown



Austin Gray



Austin Gray Dark



Austin Natural

Berna Topo

Avenue Black

Boston Bone

Avenue Brown

Boston Grafito

Avenue Grey

Boston Stone

Avenue White

Boston Topo

Berna Acero

Brazil Arena

Berna Caliza

Brazil Blanco

Berna Grey

Brazil Natural



Butan Acero

Butan Bone

Cascais Beige

Cascais Natural

Cascais Noce

Caucaso Beige

Caucaso Blanco

Caucaso Negro

Caucaso Rojo

Caucaso Verde

Ceilan Marfil

Ceppo Acero

Ceppo Stone

China Acero

China Silver

Cosmos



Dayton Ash

Detroit Silver

Dayton Graphite

Dover Acero

Dayton Sand

Dover Arena

Deep Brown

Dover Caliza

Deep Grey

Dover Topo

Deep Grey Light

Durango Acero

Deep White

Durango Bone

Desert Blue

Durango Silver



Durango Topo

Image White

Estocolmo Gris

Java Caliza

Estocolmo Natural

K2

Fossil Beige

Kaos Beige

Fossil Grey

Kaos Black

Image Cream

Kaos Brown

Image Dark

Kaos Grey

Image Silver

Karachi Acero



Karachi Grey

Madagascar Beige

Krono Clay

Madagascar Blanco

Krono Dark

Madagascar Marron

Krono Grey

Madagascar Natural

Lavagna Blanco

Max Beige

Lavagna Negro

Max Black

Lisboa Caliza

Max Black Super

Lisboa Taupe

Max Grey



Milano Grafito

Montecarlo Natural

Milano Topo

Nara Beige

Mirage Cream

Nara Blanco

Mirage Dark

Nara Natural

Mirage Silver

Natal Antracita

Mirage White

Natal Marfil

Montecarlo Beige

Nazca Antracita

Montecarlo Gris

New York



Ocean Beige

Onice Marfil

Ocean Caliza

Onice Siena

Ocean Natural

Ontario Dark

On Beige

Ontario Silver

On Black

Pekin Caldera

On Brown

Persa Dark

On Grey

Persa Natural

On Grey Light

Persa Silver



Piedra Borgona Arena

Portland Caliza

Piedra Borgona Caliza

Portland Silver

Pietra Blue Silver

Prada Acero

Pietra Blue Stone

Prada Caliza

Portblack

Prada Grey

Portland Acero

Prada White

Portland Antracita

Ramsey

Portland Arena

Recife Antracita



Recife Gris

Rodano Caliza

Recife Pulpis

Rodano Silver

River Antracita

Rodano Taupe

River Silver

Sahara Natural

River Stone

Sahara Sand

Roche Ivory

Samoa Antracita

Rocher Natural

Samoa Silver

Rodano Acero

Sandstone Beige



Stone Flame

Stylker Dark

Teide Stone

Tibet Arena

Tibet Black

Tibet Caliza

Urban Black Matt

Urban Acero Matt

Urban Caliza Matt

Urban Natural Matt

Verbier Dark

Verbier Sand

Verbier Silver

Yazz Black

Yazz Grey



# Concrete Porcelain Series

56 When you're designing with cast-in-place concrete walls or precast concrete panels, you'll likely find yourself stuck with the industry's aesthetic standards. Or the material's limitations.

Like minimum reveal widths or styles, and standard quirk or chamfered corner details. Or form tie holes you need to work into your design and then deal with sealing them.

## Get tighter joints and details

With technical porcelain panels, you can design the concrete look you want, with tighter, cleaner joints. And endless color, form, tones, and texture choices for your exterior facade design.

And the open-joint porcelain cladding system is a true rainscreen system. That means it gives you and your client a much more energy-efficient wall than you can get with normal concrete construction.

## A more controllable finish you can count on

Without the form tie holes or the mismatched patching of "honeycombs" & "bug holes" that come standard with concrete... You can finally take back control of the finished look of your exterior facade.

How about blended tones? And planned discoloration? You can blend the different tones we have available across your façade. Resulting in a more realistic outcome.

The concrete porcelain series is the design choice you can count on to make your design (and you) look its best.

Aston Acero

Aston Antracita

Aston Caliza

Baltimore Beige

Baltimore Grey

Baltimore Natural

Baltimore White

Bluestone Acero



Bluestone Bone

Bottega White

Bluestone Silver

Cannes Gray

Bluestone Topo

Cannes Gray Dark

Bottega Acero

Cannes Natural

Bottega Antracita

Concept Gris

Bottega Caliza

Concept Gris Bright

Bottega Grafito

Concept Natural

Bottega Topo

Concept Natural Bright



Concrete Beige

Cover Sand

Concrete Black

Cover Silver

Concrete Grey

Cover Steel

Core Coal

Dakota Bone

Core Grey

Dakota Silver

Core Sand

Frame Clear

Core White

Frame Dark

Cover Dark

Harlem Acero



Harlem Caliza

Morse White

Harlem Silver

Nantes Acero

Metropolitan Antracita

Nantes Arena

Metropolitan Caliza

Nantes Caliza

Metropolitan Silver

Newport Acero

Morse Beige

Newport Beige

Morse Coal

Newport Gray

Morse Grey

Newport Gray Dark



Newport Natural

Rhin Natural

Newport White

Rhin Negro

Park Acero

Rhin Taupe

Park Black

Roche Retro Acero

Park Blanco

Sena Acero

Park Silver

Sena Caliza

Rhin Gris

Soho Acero

Rhin Ivory

Soho Bone



Soho Silver

Urban Black

Soho Topo

Urban Caliza

Toscana Bone

Urban Natural

Toscana Caliza

Vela Black

Toscana Stone

Vela Grey

Tribeca Acero

Vela Natural

Tribeca Caliza

Vela Smoked

Urban Acero



# Metal Porcelain Series

68 Is your exterior facade design calling for the stylish look of metal? But you've had gut-wrenching past experiences of lousy metal panel fabrication or installation? You know the ones... warping and oil-canning panels... lazy field-bent edges lacking the crisp edge you imagined...

## The look of metal without the headaches

If you're like most architects and designers, you'd prefer the look of flat metal panels on your façade. But corrugations and grooves are what give strength to metal.

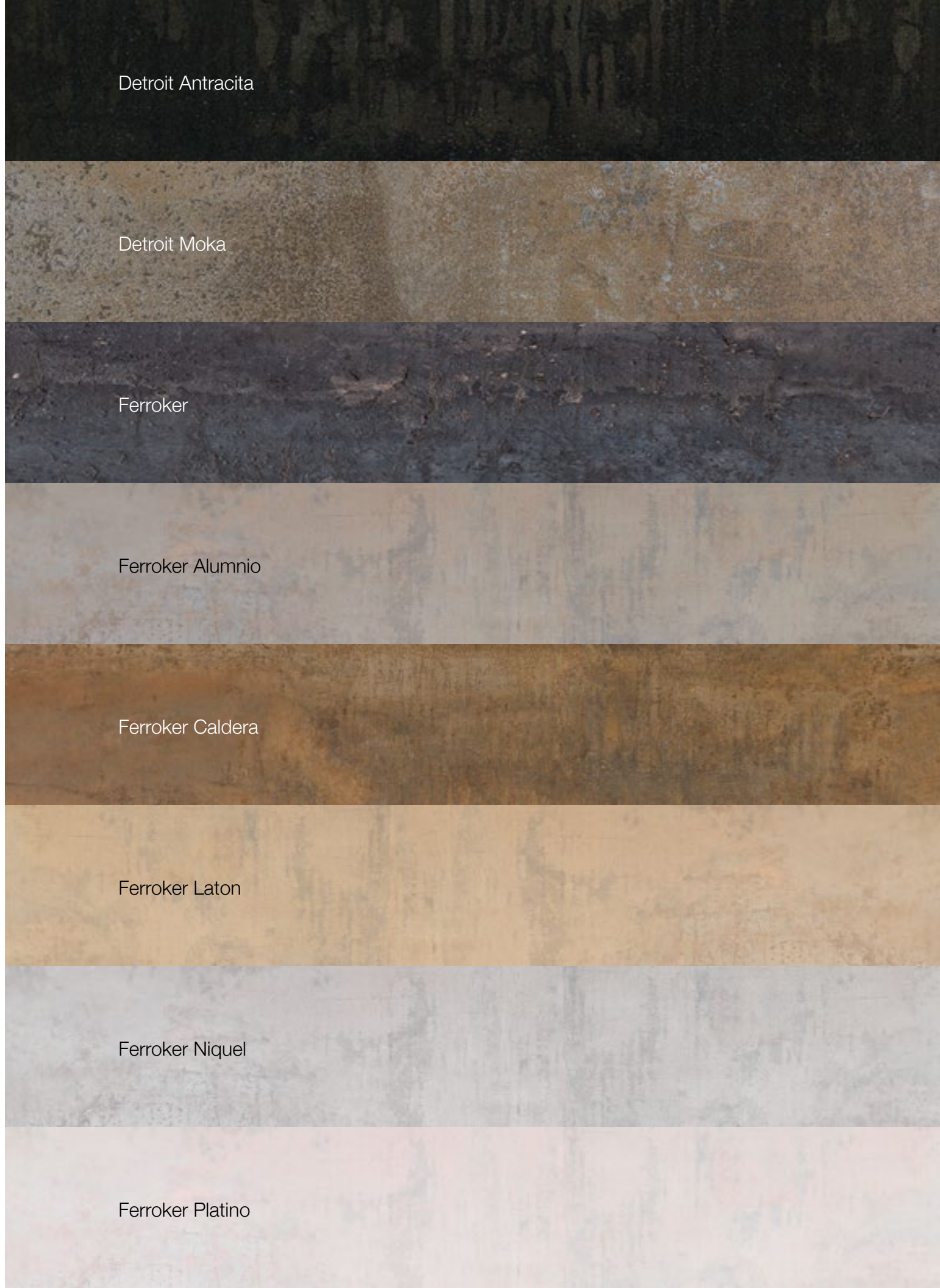
With technical porcelain cladding panels, you get the look of wide, flat metal panels, with no worry of client calls asking why their building looks wrinkled.

You can also achieve the warm, rust colors of corten without the staining and environmental impacts.

Or maybe you love the look of corten steel, but your client would be less than pleased with the iron stains running down their new building's face and sidewalks.

## Flexibility and customization

Exterior porcelain cladding panels also give you the flexibility and ease of customization you find with metal cladding panels. And you can get the clean, crisp edges you want on your panels without the worry of catching clothes or cutting skin.



Detroit Antracita

Detroit Moka

Ferroker

Ferroker Aluminio

Ferroker Caldera

Ferroker Laton

Ferroker Niquel

Ferroker Platino



Ferroker Titanio

Glasgow Silver

Ironker Acero

Ironker Cobre

Seattle Brown

Seattle Dark



# Decorative Porcelain Series

72 Are you looking for an exterior porcelain cladding panel to help you add texture, or decorative motifs and patterns to your building? Our Decorative Porcelain Series has a striking variety of design options for your next exterior façade project.

Get the look of natural materials, like travertine & marble... With the Carrara and Manila Series, your cladding panels can replicate nature.

## Do you want the striated texture of a brushed finish?

Have a look at the Avenue, Cubica, and Tissue Series. You'll find several different porcelain cladding color and texture combinations to bring your building façade to life.

## Porcelain cladding textures and patterns for the human scale...

At some point, your façade "comes down" to the human scale where they can touch, feel, and interact with it. Will you find the perfect "touchpoints" here?

Touch, see, and feel for yourself... Request samples of any porcelain panel to choose the right one for your next project.

Avenue Beige

Avenue Dark Gray

Avenue Dark Matt

Avenue Gray

Avenue White

Avenue White Matt

Cubica Blanco

Cubica Marfil





Fontana Matt



Glow Dark



Glow White



Indic



Indic Gris



Indic Marfil



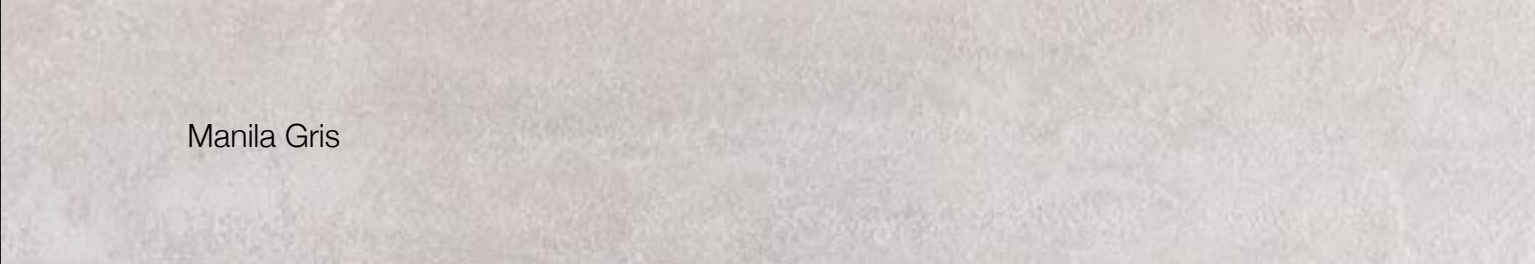
Magma Black



Manila Arena



Manila Blanco



Manila Gris



Rivoli



Safari Arena



Safari Caliza



Silk Blanco



Silk Verde



Tissue Gold



Tissue Silver

Travertino Beige



# Technic Porcelain Series

78 Modern? Post-modern? Contemporary? Traditional?

Wherever your design style falls, you'll find the perfect exterior porcelain cladding panels to fit your facade design in the Technic Series.

79

## Knockout colors you want...Smart benefits you need...

You'll fall in love with the exterior porcelain colors and finishes the Technic Series offers. Giving you aesthetic possibilities to take your facade design to the next level.

With the all-natural, "baked-in" benefits that come from all our technical porcelain panels... Superior strength, durability, and usability you won't find with other exterior materials, like stone, metal, or brick cladding.

## "Is exterior porcelain cladding in my budget?"

Our experienced team of architects and engineers specializes in helping architects create "knock-your-funky-colored-socks-off" building facade designs, while staying in budget.

Reach out and ask us about our Design Assist program. Or read more about it on **page 24** of this catalog.

Ark White

Ark White Bright

Extreme White

Maker Beige

Maker Brown

Maker Graphite

Maker Grey

Maker Ice



Maker Rope

Stuc Beige

Maker Sand

Stuc Black

Maker Smoke

Stuc Grey

Marmi Blanco

Stuc White

Neo Beige

Technic Nieve

Neo Black

Town Acero

Neo Grey

Town Aqua

Neo White

Town Arena



Town Black

Town Blue

Town Cobalto

Town Cosmos

Town Green

Town Moka

Town Niquel

Town Orange

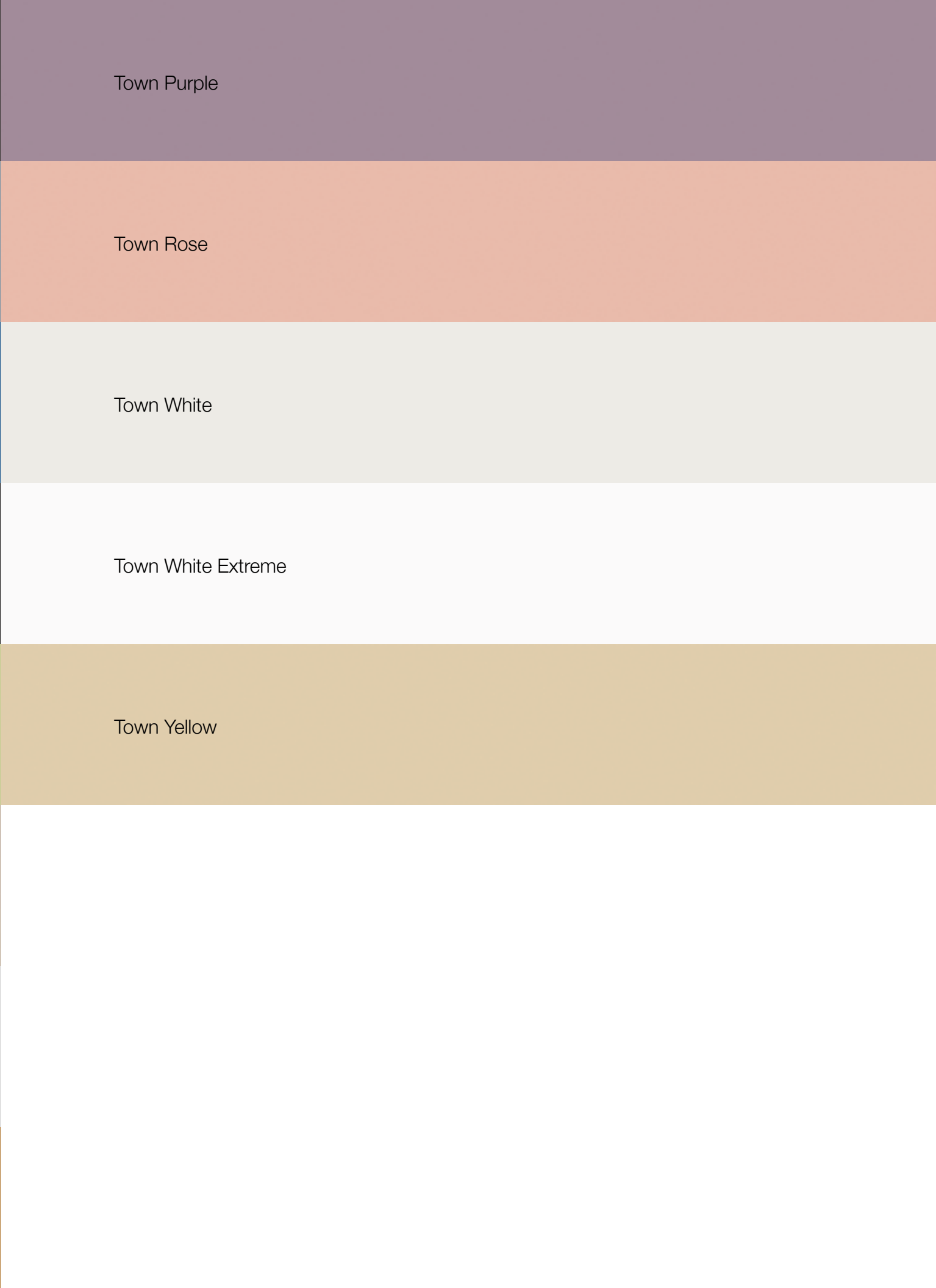
Town Purple

Town Rose

Town White

Town White Extreme

Town Yellow





# Terracotta Porcelain Series

84 Architects and designers loved the look of architectural terracotta for centuries. And it's making a return in our modern building facades. Now, you can have the look of terracotta cladding panels without the worries.

With technical porcelain, you can get the warm, soft color and texture of terracotta cladding without the fear of water-related deterioration. No more crazing or spalling that comes from traditional glazed terracotta cladding.

## Your Terracotta Upgrade

Did you know if you specify architectural terracotta, it's only required to meet the same standards as clay brick (ASTM C67)? That means it can have 4% to 7% water absorption and still pass. So, it allows water in to do its damage.

Not in our house. Our terracotta porcelain series panels (like all our technical porcelain) meet the much more rigid ASTM C373. That means they have water absorption of 0.1% or less. So, water doesn't get in.

Salmon

Salmon Texture

Cota

Cota Texture

Adobe

Adobe Texture



# Wood Porcelain Series

With technical porcelain, you can get textured cladding panels that look and feel like wood. But they'll actually help protect your building's exterior facade for the long run. Without the maintenance. Without the hassles.

## The warmth and feel of wood...

without the worry of fading or painting every year for maintenance. Or the danger of your wood cladding catching fire.

With technical porcelain, you can get textured cladding panels that look and feel like wood. But they'll actually help protect your building's exterior facade for the long run. Without the maintenance. Without the hassles.

Browse through the wood finishes in this family and let us know which ones you'd like to sample. And if you don't see the one you want, let's talk more and see if we can find the perfect match for your building's exterior facade design.

**Please check the Wood Series Catalog on our website for the full selection of wood porcelain cladding colors and sizes**

Give us a call today and let's see how we can work together.

Give us a call at  
[1.866.FACHADA](tel:1866FACHADA)

Or email us at  
[hello@porcelanosafacades.com](mailto:hello@porcelanosafacades.com)



# Exterior Porcelain Facade Projects

88 You'll also find our exterior porcelain cladding panels featured on a variety of building use types. Retail, residential, multi-family, and commercial buildings of all kinds.

You'll also find our panels featured on a variety of building use types. Retail, residential, multi-family, and commercial buildings of all kinds.

North, South, East or West, technical porcelain facade panels are the **perfect solution for any climate region.**

## Did you know?

- Porcelanosa has been present in the US for over 30 years, but only promoting interior porcelain during that time.
- Although we've only been using exterior porcelain cladding panels in the US for seven years, we've been using them since 1998 in Europe, Asia, the Middle East, and Africa.
- Since 2014, our exterior porcelain facade panels have been featured on over 70 projects in North America.
- Right now, our panels are installed (or being installed) on over 15 high-rise buildings in the Northeast. All of them over 20 stories tall.

### What others are saying

*"We were looking for a bold, modern material that was different. We wanted the façade to be contemporary and different from other projects around New England. We achieved that goal through the use and quality of the porcelain cladding joints. The system's flexibility ends up with a clean look worthy of a museum. But the material's scale and patterning can still be consistent with a residential project."*

**Eric Robinson, AIA, Principal**  
**RODE Architects, Boston, MA**

## Is it right for your project?

Whether you're re-cladding an existing building's facade or building a brand new one, you'll find great examples of each project type in our project portfolio.

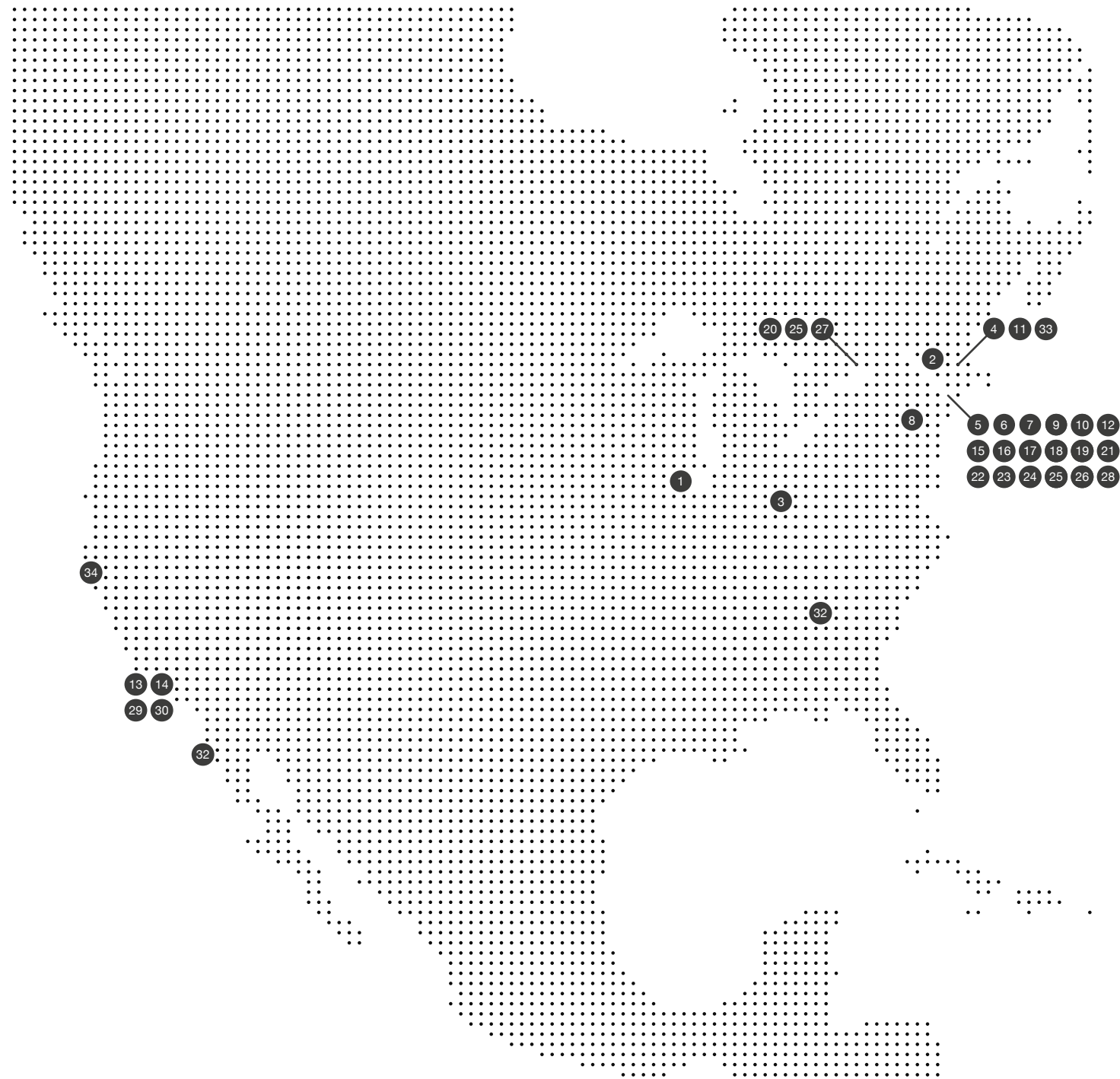
And if you'd like to visit one of our projects, or would like to speak with a past client, **let us know**. We're proud of the growing list of architects and building owners we've helped.

And, if you're not already on there, we look forward to the day we add you and your project to our list.

Market Segment	Project	Location	Material	Stories	Map
Educational	El Centro Northeastern University	Chicago, IL	On Black Nature	3	1
	Tahanto Regional Middle School**	Boylston, MA	Ferroker Caldera & Ironker Cobre	2	2
Hospitality	AC Hotel	Cincinnati, OH	Cincinnati Crema	8	3
	Broadway Hotel	Boston, MA	XLIGHT Nox Corten	8	4
	Courtyard by Marriott Hotel*	Manhattan, NY	Town White & Niquel	29	5
	Indigo Hotel*	Newark, NJ	Avenue White Nature	14	6
Multi-family	The Alexey	Brooklyn, NY	Tribeca Caliza & Ferroker Caldera	12	7
	Fittler Nine Townhouses	Philadelphia, PA	Boston Topo & Bone	4	8
	Washington Avenue Luxury Condos	Brooklyn, NY	Boston Grafito & Bone	14	9
	The Nordic	Brooklyn, NY	Avenue Black & Boston Stone	6	10
	Washington Street Condos	Boston, MA	Max Grey Lappato & Nature	5	11
	East 100 Street	Manhattan, NY	Avenue Grey	7	12
	Criterion Building	Santa Monica, CA	Arizona Caliza	3	13
	Playa Vista Residential Building	Playa Vista, CA	Ferroker Caldera	4	14
	Alta LIC Tower*	Queens, NY	Town White Nature & Cubica	42	15
	Third Avenue Condos*	Manhattan, NY	Duna Grey Nature	30	16
	West 36 Street*	Manhattan, NY	Color 515	39	17
	Tangram*	Queens, NY	Ferroker Niquel	15	18
	The Clare*	Manhattan, NY	Glas	19	19
	One The Explanade*	Toronto, Canada	Toronto Caliza	36	20
321Wythe*	Brooklyn, NY	Ferroker Titanio	21	21	
The Nevins*	Brooklyn, NY	Dover Arena	25	22	
West 86 Street*	Manhattan, NY	Custom Color	23	23	
West 95 Street*	Manhattan, NY	Piedra Borgonya	20	24	
O2 Boutique Condos*	Toronto, Canada	Max Beige Lappato	15	25	
Chelsea Luxury Condos**	Manhattan, NY	On Black	8	26	
St. Claire Apartments**	Toronto, Canada	On Beige Nature	26	27	
Offices	60 Street	Brooklyn, NY	Samoa Antracita & Mirage Dark	5	28
	Pacific Center Entrances**	Torrance, CA	XL Lush White & Canada White Washed	9	29
Retail	Nordstrom Century City	Los Angeles, CA	Morse White Nature	3	30
	Nordstrom La Joya	San Diego, CA	Morse White Nature	3	31
	Phipps Plaza Shopping Mall**	Atlanta, GA	Arizona Caliza & On Brown	2	32
	Cabot Retail Store**	Boston, MA	Stuc White Nature	2	33
Sports	San Jose State University	San Jose, CA	Ocean Caliza	3	34



# Selected Projects



Check out the list on **page 85**



The Clare Residencies in NYC / Manuel Glas Architect



# Locations

92 You'll find us in 16 states. With 30 showrooms right now, we're growing and adding more. Plus, we have 6 logistics centers in the US to help make sure you get your exterior porcelain cladding panels onsite when you need them.

Our flagship showroom is on 202 Fifth Avenue in New York, across the street from the landmark Flatiron Building. We own the building, so you know we're here to stay.

We're close to you...  
Get ahead of the design curve!

Give us a call today and let's see how we can work together.

If you can't make the trip to one of our showrooms, don't worry, we'll come to you.

Give us a call at  
1.866.FACHADA

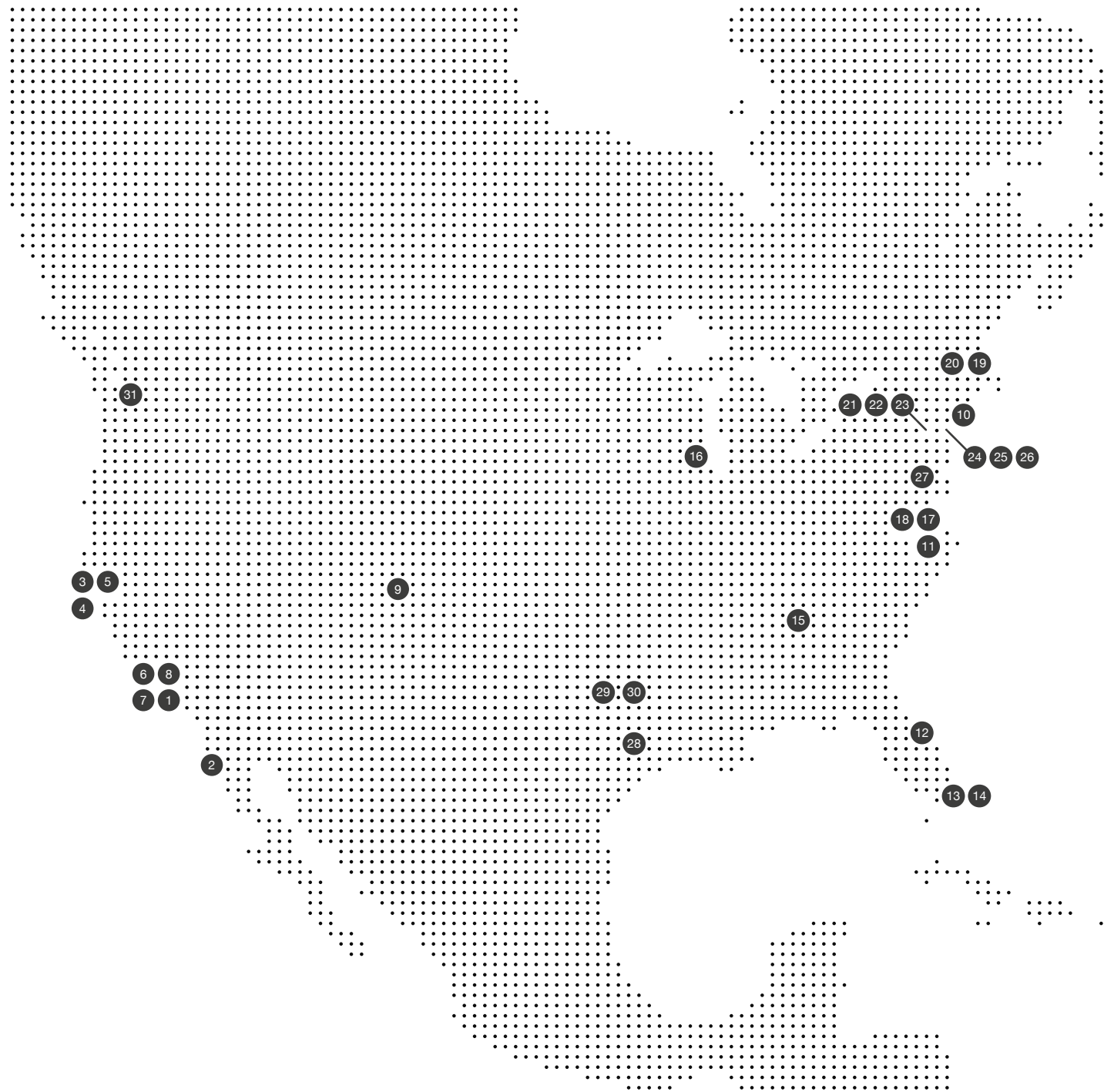
Or we'll send you whatever porcelain cladding samples or system components you need to help find the perfect fit for your next masterpiece.

Or email us at  
[hello@porcelanosafacades.com](mailto:hello@porcelanosafacades.com)

State	Location	Address	Phone	Map
California	Anaheim	1301 South State College Boulevard, CA 92126	714.772.3183	1
	San Diego	8996 Miramar Road, Suite 100, CA 94103	858.322.6012	2
	San Francisco	78 Division Street, CA 95112	415.593.7763	3
	San Jose	391 East Brokaw Road,	408.467.9400	4
	Walnut Creek	1401 N. Broadway, CA 94596	925.952.7430	5
	West Hollywood	8900 Beverly Boulevard, CA 90048	310.300.2090	6
	Dealer Gallery - Hermosa Beach	219-221 Pacific Coast Highway, CA 90254	424.390.4460	7
	Dealer Gallery - Glendale	4116 San Fernando Rd, Glendale, CA 91204	818.500.8505	8
Colorado	Denver	601 South Broadway, Suite W, CO 80209	303.802.3210	9
Connecticut	Riverside	1063 East Putnam Avenue, CT 06878	203.698.7618	10
District of Columbia	Washington DC	1000 Connecticut Avenue, NW, DC 20036	202.204.1655	11
Florida	Pompano Beach	3400 North Powerline Road, FL 33069	954.968.7666	12
	Miami	8700 N.W. 13th Terrace, FL 33172	305.715.7153	13
	Miami Design District	3705 Biscayne Boulevard, FL 33137	786.329.6753	14
Georgia	Atlanta	3255 Peachtree Road NE, Suite B, GA 30305	404.973.0640	15
Illinois	Chicago	222 Merchandise Mart Plaza, Suite 149, IL 60654	312.204.6220	16
Maryland	North Bethesda	11500 Rockville Pike, MD 20852	240.290.1120	17
	Rockville	701 Dover Road, Unit B, MD 20850	301.294.8193	18
Massachusetts	Boston	1 Design Center Place Suite 505, MA 02210	617.963.7666	19
	Chesnut Hill at the Street	55 Boylston St. #5550, MA 02467	617.608.0167	20
New Jersey	East Brunswick	252 Route 18 North, NJ 08816	732.613.1915	21
	Ramsey	600 Route 17 North, NJ 07446	201.995.1310	22
	Paramus	65 Route 17 South, NJ 07652	201.712.0556	23
New York	Flagship Showroom New York	202 Fifth Avenue, NY 10010	646.751.1180	24
	Westbury	775 Old Country Road, NY 11590	516.338.0097	25
	Brooklyn Industry City	219 36th Street, Brooklyn, NY 11232	201.378.8778	26
Pennsylvania	King of Prussia	645 West Dekalb Pike (US Rt. 202), PA 19406	484.751.0050	27
Texas	Houston	4006 Richmond Avenue, TX 77027	281.605.2770	28
	Dallas	11639 Emerald Street, Suite 100, TX 75229	469.310.2870	29
	Dallas	Hi Line Drive, Suite 415 Dallas, TX 75207	214.377.2327	30
Washington	Seattle	88 Spring Street, Suite 120, WA 98104	206.673.8395	31



# Locations







## How to Make Your “Impossible” Design Ideas Possible

Learn: “What is technical porcelain, and why is it my best exterior cladding choice?” - *Page 10*

Sleep better with a complete exterior porcelain cladding system working hard for your facades - *Page 14*

Discover the most cost-effective exterior facade design option for your building project - *Page 18*

Save your design team time, money, and headaches - **Design Assist** - *Page 24*

Create your own custom, signature look with our **Design Your Porcelain** Program - *Page 32*

Find your perfect façade panel in one of our Porcelain Collections - *Page 34-83*

### Questions?

**Contact us at**  
1.866.FACHADA

**Or email us at**  
[hello@porcelanosafacades.com](mailto:hello@porcelanosafacades.com)

### Find us at

**Website**  
[www.porcelanosafacades.com](http://www.porcelanosafacades.com)

**Headquarters**  
600 Route 17 North.  
Ramsey, NJ 07446