

# PORCELANOSA FACADE/

**Your Guide to  
Open-Joint  
Porcelain Wood  
Cladding Solutions**

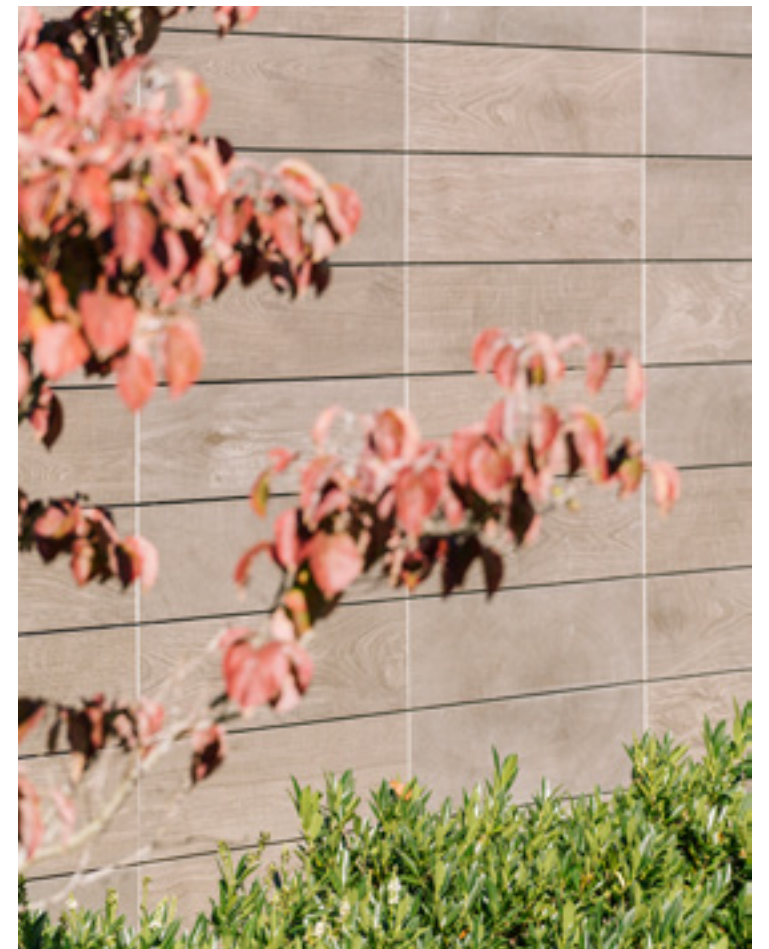




It's our mission  
and our passion to  
make your design  
a reality

# Content

- Warranty & Certifications <sup>4</sup>
- Sizes of Wood Series <sup>6</sup>
- Wood Porcelain Series <sup>8</sup>
- Active Stock <sup>16</sup>





4 **Peace of Mind**



It's our mission and our passion to make your design a reality

We're proud to offer you our **10-Year Limited Warranty** on our Wall Panel System & Finish as seen here:

[www.porcelanosa-usa.com/porcelanosa-facades](http://www.porcelanosa-usa.com/porcelanosa-facades)

Giving you and your client peace of mind that we stand behind our Open Joint Porcelain Cladding System 100%.

**Third-Party Tested**

Assurance that all our materials meet your quality performance expectations.



**ICC-ES Report #ESR-3343**

This means you and your client know you're choosing a new and innovative building product that complies with building codes.

We are the FIRST porcelain panel rainscreen façade system to receive ICC-ES certification

Compliance with:

- IBC 2009, 201 & 2015
- California Green Building Standards Code
- California Building Code
- Florida Building Code

**Florida Product Approval – FL-20391**

The Florida Building code requires all exterior wall panels be tested and registered with the State through their product approval program.

You'll find our system's TER (Technical Evaluation Report) on our website:

[www.porcelanosa-usa.com/porcelanosa-facades/](http://www.porcelanosa-usa.com/porcelanosa-facades/)

**American Architectural Manufacturers Association (AAMA) – AAMA 509-9**

This assures you our system has been successfully tested under the AAMA 509-9 standard "Voluntary Test and Classification Method of Drained and Back Ventilated Rain Screen Wall Cladding Systems."

# Sizes of Wood Porcelain Series

6 Our technical porcelain panels are produced with standard mid-size molds in various sizes (i.e. 6’x2’, 4’x4’, 4’x2’, etc.). Selecting from these standard mold sizes is your more economical choice. You can also economically get other sizes by cutting down those standard mold sizes in halves or thirds.

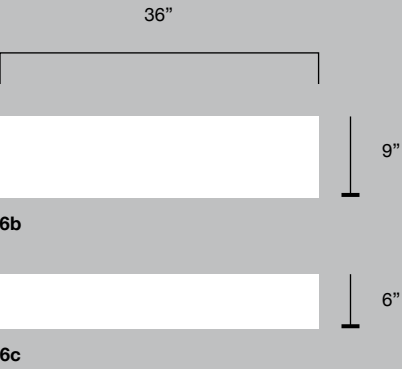
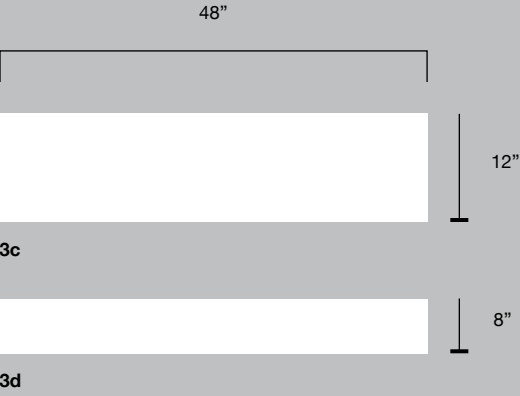
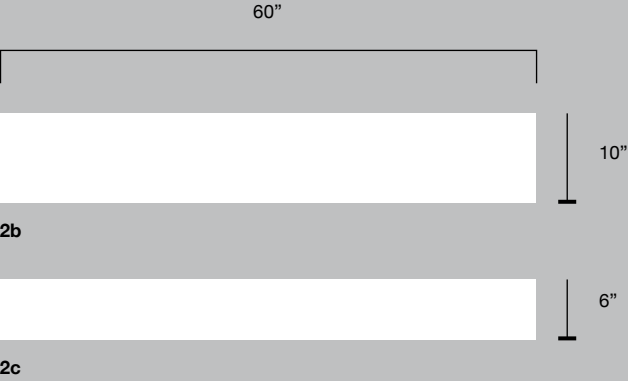
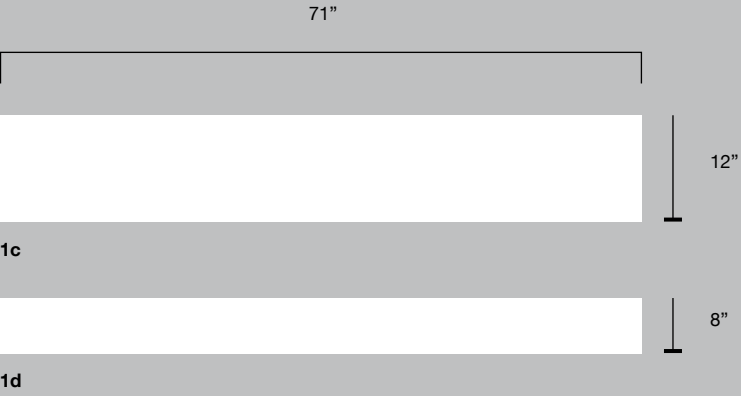
All porcelain colors you see in this catalog are available in any of the sizes\*\* shown in the opposite page. When your project has a minimum quantity of 15,000 square feet of porcelain production. This figure varies upon your project’s application of the cladding. So be sure to check in with us:

Give us a call at  
1.866.FACHADA

Or email us at  
hello@porcelanosafacades.com

## Exact Dimensions

Panel Index	Width		Height		Thickness	
	inches	mm	inches	mm	inches	mm
1c	70-7/8"	1.800	11-9/16"	294	0,45"	11,5
1d	70-7/8"	1.800	7-5/8"	193	0,45"	11,5
2b	59-1/16"	1.500	9-13/16"	250	0,43"	11
2c	59-1/16"	1.500	6-1/2"	165	0,43"	11
3c	47-1/4"	1.200	11-9/16"	294	0,45"	11,5
3d	47-1/4"	1.200	7-5/8"	193	0,45"	11,5
6b	35-7/16"	900	8-11/16"	220	0,41"	10,5
6c	35-7/16"	900	5-5/8"	143	0,41"	10,5





# Wood Porcelain Series

<sup>8</sup> Most of us love the comfortable, natural, familiar look of wood grain. But the thought of the required maintenance over the years can lead us away from that choice. Until now...

## The warmth and feel of wood...

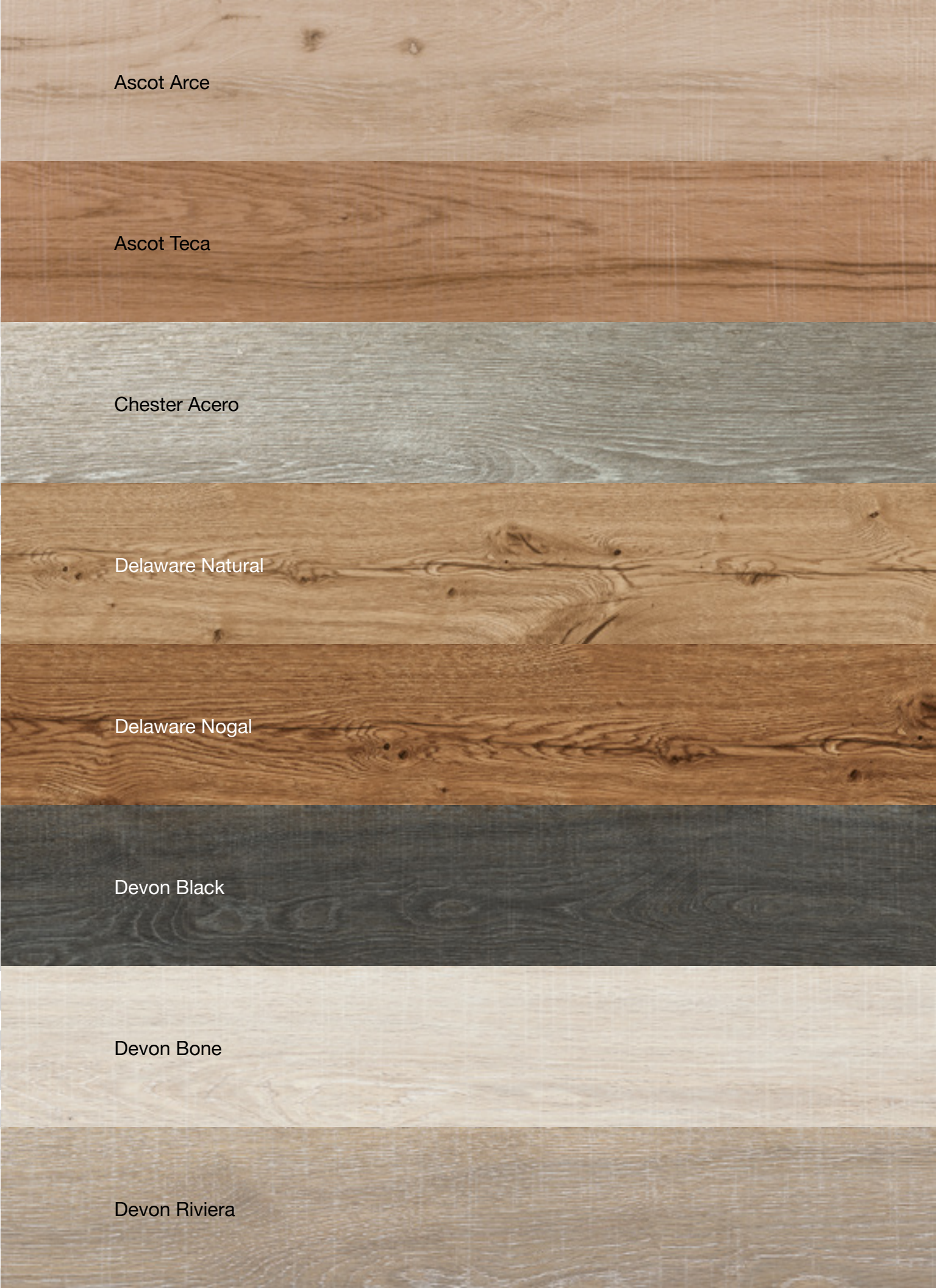
without the worry of fading or painting every year for maintenance. Or the danger of your wood cladding catching fire.

With technical porcelain, you can get textured panels that look and feel like wood. But they'll actually help protect your building's exterior for the long run. Without the maintenance. Without the hassles.

Browse through the wood finishes in this family and let us know which ones you'd like to sample. And if you don't see the one you want, let's talk more and see if we can find the perfect match for you.

The wood colors shown here are only a small representative selection.

Please check the Wood Series Catalog on our web for the full selection of wood colors and sizes.







Devon Roble

Manhattan Cognac

Manhattan Colonial

Manhattan Maple

Minnesota Ash

Minnesota Camel

Minnesota Cream

Minnesota Honey



Minnesota Moka

Nebraska Noir

Nebraska Tea

Nobu Arce

Nobu Roble

Oxford Acero

Oxford Antracita

Oxford Blanco



Oxford Castano

Oxford Cognac

Oxford Natural

Tanzania Almond

Tanzania Natural

Tanzania Nut

Tanzania Silver

Tanzania Taupe

Tanzania White

Tanzania Wine

Vancouver Brown

Vancouver Honey

Vancouver Moka

Vancouver Nude

Vancouver Sand

Bremen Ash



Bremen Natural

Bremen Nut

Bremen Roble



Private house in Shelter Bay  
Raymond Chan Architect



# Active Stock of Wood Porcelain Series

With technical porcelain, you can get textured panels that look and feel like wood. But they'll actually help protect your building's exterior for the long run. Without the maintenance. Without the hassles.

## Sizes Available

Projects of any size: Any of the available in Active-Stock sizes shown here in this matrix.

Panel Size	1a	1b	1c	1d	2a	2b	2c	3a	3b	3c	3d	5a	5b	6a	6b	6c	7a	7b	8
								4a	4b	4c	4d								
Ascot Arce										✓	✓								
Ascot Teca										✓	✓								
Chester Acero															✓				
Delaware Natural			✓	✓						✓	✓								
Delaware Nogal			✓	✓						✓	✓								
Devon Bone			✓	✓															
Devon Riviera			✓	✓															
Manhattan Cognac			✓	✓						✓	✓								
Manhattan Colonial			✓	✓						✓	✓								
Manhattan Maple			✓	✓						✓	✓								
Minnesota Ash						✓									✓				
Minnesota Camel						✓													
Minnesota Cream						✓													
Minnesota Honey						✓													
Minnesota Moka						✓													
Nebraska Noir						✓													
Nebraska Tea						✓													
Nobu Arce			✓	✓															

Remeber to check panel dimensions at **page 8**



Panel Size	1a	1b	1c	1d	2a	2b	2c	3a	3b	3c	3d	5a	5b	6a	6b	6c	7a	7b	8
								4a	4b	4c	4d								
Nobu Roble			✓	✓															
Oxford Acero										✓	✓								
Oxford Antracita										✓	✓								
Oxford Blanco										✓	✓								
Oxford Castano										✓	✓								
Oxford Cognac										✓	✓								
Oxford Natural										✓	✓								
Tanzania Almond						✓									✓	✓			
Tanzania Natural						✓									✓				
Tanzania Nut						✓									✓	✓			
Tanzania Silver						✓									✓				
Tanzania Taupe						✓													
Tanzania White						✓									✓	✓			
Vancouver Brown						✓													
Vancouver Honey						✓													
Vancouver Moka						✓													
Vancouver Nude						✓									✓				
Vancouver Sand						✓									✓				

Panel Size	1a	1b	1c	1d	2a	2b	2c	3a	3b	3c	3d	5a	5b	6a	6b	6c	7a	7b	8
								4a	4b	4c	4d								
Bremen Ash											✓								
Bremen Natural											✓								
Bremen Nut											✓								
Bremen Roble											✓								



Questions?

**Contact us at**  
1.866.FACHADA

**Or email us at**  
[hello@porcelanosafacades.com](mailto:hello@porcelanosafacades.com)

Find us at

**Website**  
[www.porcelanosafacades.com](http://www.porcelanosafacades.com)

**Headquarters**  
600 Route 17 North.  
Ramsey, NJ 07446