
PORCELANOSA FACADE/



Hi,

Over the course of a project's design and construction, architects, designers, and engineers have thousands of decisions to make.

And those decisions often have impacts on each other that can be easily missed.

That's why it's so important to have those important reminders and checklists at each phase of your project. To help you stay on track, ask those important questions, and constantly improve your designs.

Remember, your trusted trade partners, like us, are here to help you make your project a success for the entire design and construction team.

In today's newsletter, you'll discover:

- How to handle penetrations and signage on your next exterior porcelain cladding project
- A school renovation project that turned to porcelain cladding to help make it a success
- The last three essential questions you need to ask for the most cost-effective open-joint porcelain façade

Your Porcelain Cladding Resource

"Dang It! I Just found out my engineers want to poke holes through my porcelain cladding. What do I do?"

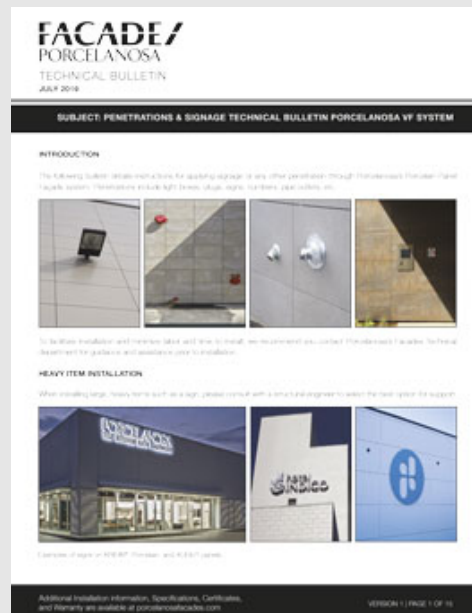
Pro Design Tip: Coordinate your exterior panel designs **early** and **often** with your mechanical, electrical, and plumbing engineers.

Specifically, you want to make sure you know where they'll have pipes, lights, louvers, and outlets on the outside of your building. And you want them to know where positioning and location of those penetrations is crucial to your design.

That way your construction documents can provide notes and dimensions for careful location of these items in the field.

Check out our fifteen-page penetration and signage bulletin [here](#) to learn how contractors cut porcelain cladding panels in the field. You'll also find more tips and things to consider as you incorporate these penetrations into your design.

Technical Bulletin: Penetrations & Signage Installation



Your Porcelain Cladding Project Example



The Mead School

Location: **North Stamford, Connecticut**

Architect: **Crown Architecture and Consulting**

Building Typologies: **Education; Renovation**

Year Constructed: **2016**

Porcelain Cladding Used: **2,500 SF**

Colors: **XLight Concrete Black (Concrete Series)**

[Here's a link](#) to see more images and details about this renovation project to this school of creative learning once attended by Jim Henson's children.

Here's what the architect had to say about this project's challenges, choosing exterior porcelain cladding, and working with our team:

"The Mead School, contemplating a major renovation and addition, engaged Crown Architecture to design a new building to be the face of their facility, which naturally had to make an architectural statement.



Crown quickly realized the new contemporary structure did not blend well with the existing mid-century modern buildings. The solution was to mask the existing façade on the aging school. And for that, Crown turned to Porcelanosa Facades.

The product had to overcome a number of challenges. In addition to the aesthetic transition and need to function on both the existing and new buildings, the facade system had to seamlessly interact with an abutting vented rain screen where depth constraints posed difficult fenestration conditions.

The Porcelanosa team's intricate knowledge of their products made the design process flawless. And their expertise and willingness to go above and beyond in field coordination allowed for an easy installation despite challenging existing conditions."

Michael Santora and Matthew Lucciola
Crown Architecture and Consulting
New York, NY

Do you have a great project you've worked on with us that you'd like to see featured here?

Hit reply and let us know...

Exterior Porcelain Cladding: Important questions to consider

Part 3 / Application & Use

In our last two newsletters, you saw the first seven essential questions you need to ask and answer while you're choosing the cladding materials for your project's appearance, and to make sure it fits within your client's budget:

To help your design decision-making process, we've developed a Design Guide to give you a ***step-by-step system***. To help you design the most cost-effective open-joint porcelain façade for your building projects.

As a quick overview, the ten steps include the following.

The Cladding

1. What are your cladding panel sizes?
2. Color-body or through-body porcelain?
3. What color and finish does your design need?
4. Do you want exposed or concealed fasteners?

The Substructure

5. What are your building's design pressures?
6. What's your build-up requirement?
7. What's the pattern for your panels?

Your Application & Use

8. What's your waste-to-yield factor?
9. Do you want field-cut panels or pre-cut from the factory?
10. Does your design require window returns?

In today's newsletter, let's learn the final three things you need to consider when you're choosing the perfect look for your next building façade...

Your Application & Use

These last steps will determine how you detail your façade system to minimize waste and improve the final quality and look of your porcelain cladding.



8) What is your waste-to-yield factor?

Are we making good use of the cladding material? Waste is the single most important cost driver and it's determined by the design. Regardless of whether we're using a specific mold, a standard size, or if it's a slab size. The rule-of-thumb for determining waste is taking the raw material into account.

If you reach out, we can help you minimize waste with the panel sizing and detailing of your project.

- If you reach out, we can help you minimize waste with the panel sizing and detailing of your project.
- High Waste; **Cost Impact: \$\$\$**



9) Do you want field-cut panels or pre-cut from the factory?

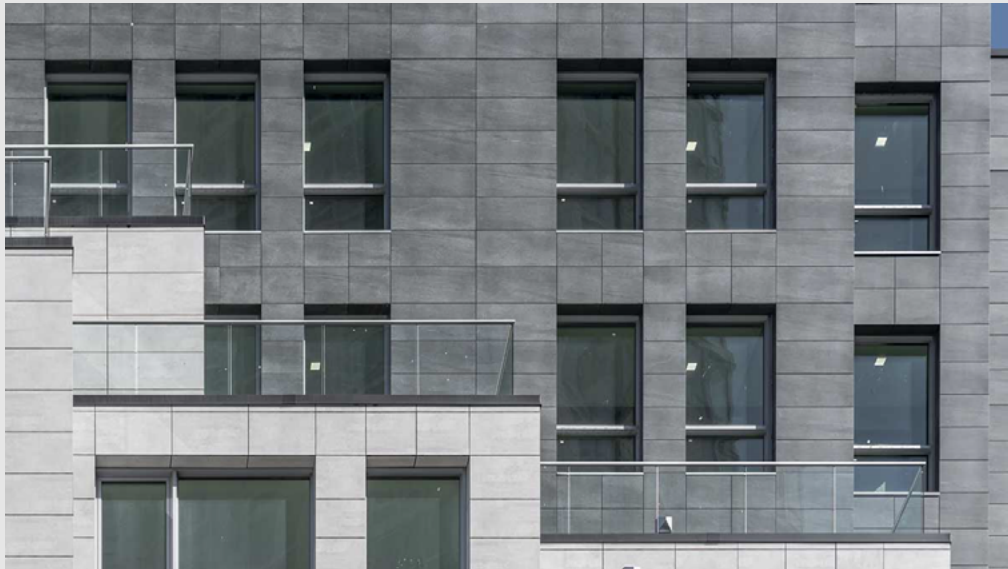
Field cutting has a cost impact based on additional labor, weather conditions & scaffolding. Most cladding manufacturers factory cut 100% of the material. This requires field measurements which can lead to production and schedule delays.

Porcelanosa doesn't require field measurements. We do shop drawings from CAD files and pre-cut 80 – 90% of your panels. That's the sweet spot. We leave the other 10 – 20% of the panels to be cut and adjusted in the field.

This avoids the delays of waiting for construction to reach the point of field measuring and then production and shipping of the new panels. Plus, there's always the chance those pre-cut panels don't fit or are too short when they arrive onsite. Which leads to additional lead times.

We feel your best option is to pre-cut as much as possible but leave that flexibility of the system to be addressed in the field.

- Pre-cut from factory; **Cost Impact: \$**
- Field-cutting; **Cost Impact: \$\$**



10) Does your design require window returns?

Your design and envelope details can have many ways to address the fenestrations of your building. All of them are great looks but can have a cost impact on your design.

To help you decide, here are several options to consider:

- Your windows can be flush with the porcelain panels; **Cost Impact: \$**
- You can inset the window and use our pre-finished cladding framing to close the cavity at the windows; **Cost impact: \$\$**
- The windows can be inset with an aluminum trim framing the opening; **Cost Impact: \$\$**
- Or you can return the porcelain panels to frame the inset windows; **Cost Impact: \$\$\$**

So, there you have it.

Ten critical questions you can use as your design guide to help you achieve your design vision and make it possible.

Are you ready to get started on your next exterior porcelain cladding project? Reach out, and we can help you find the cladding system to help you stay on budget and keep your design vision intact.

That's all for today. We hope you've enjoyed reading another issue of our newsletter's updated format.

We'd love to hear what you think of it! What you'd like to hear more about... Or hear more about what you're working on.

Just hit reply and let us know. We read every response.

Until next time, keep a look out for number ONE...
Your Partners in Design at

PORCELANOSA FACADE/

P.S. Here's three ways we can help you right now...

1) Sign up for our Virtual Online Lunch & Learn CEU presentation.

[Sign up here](#) for our presentation called, "Ventilated Façade System for Buildings."

You'll earn **1 AIA HSW CEU**, and you'll learn more about when & how to use a ventilated façade, as well as the advantages you'll get using a ventilated façade over using other cladding systems.

SIGN UP TODAY!

2) Contact us for a free, no-obligation project consultation.

Go [here](#) to schedule a no-obligation call. Get to know us and share your vision for your project. If this project isn't a great fit, we'll just let each other know. And part as new BFFs looking forward to the next chance to work together.

Or you can always give us a call at 1.866.FACHADA

3) See if your project is a good fit for our Design Assist service.

Check out our two-page Design Assist Services description [here](#) to help understand a bit more about this awesome way we can work together.

The TL;DR version: If your project meets just two simple requirements, our **complimentary** Design Assist service will help ensure your façade design's success, while saving your design team time, money, and headaches.

[Check it out](#) today!