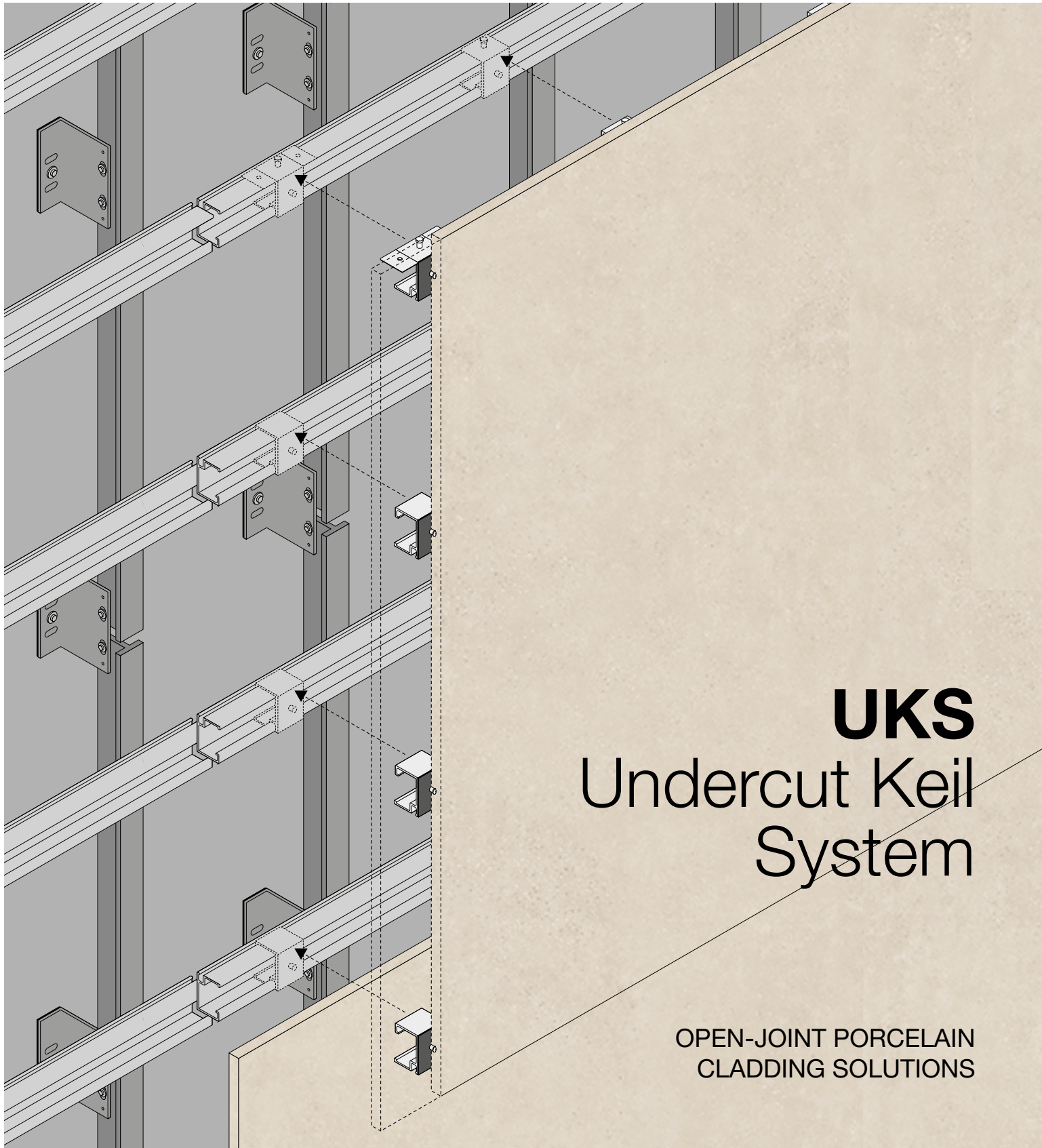


# PORCELANOSA FACADE/



**UKS**  
Undercut Keil  
System

OPEN-JOINT PORCELAIN  
CLADDING SOLUTIONS

# UKS / Undercut Keil System

## DESIGN MEETS PERFORMANCE. BUILD WITH CONFIDENCE

The UKS - Undercut Keil System is a ventilated façade solution developed by Porcelanosa. It's designed for pre-set sized and large-format porcelain cladding. It enhances any building envelope's aesthetic and thermal performance. This façade system is elegant, durable, and efficient, making it ideal for architects and developers.

## A COMPLETE SYSTEM. A SMARTER FAÇADE.

UKS is a mechanical concealed fixing system with a lightweight aluminum substructure and hidden undercut keil anchors. These anchors are fastened by Porcelanosa to the back of porcelain panels. The result is a clean, uninterrupted exterior surface. It offers exceptional design flexibility, ranging from minimalist textures to bold architectural expressions.

## WHY CHOOSE UKS-UNDERCUT KEIL SYSTEM?

- Design Freedom**  
Lets you customize façade layout patterns and unique formats.
- Aesthetic Versatility:**  
Wide range of finishes, textures, and sizes.
- Concealed Fixing System:**  
No visible mechanical elements.
- Thermal & Acoustic Performance:**  
Enhances insulation and energy efficiency.
- Durability:**  
Water-resistant, UV-resistant, and non-combustible.
- Wind Load Resistance:**  
Suitable for high-rise and exposed locations.  
Fast Installation: Dry system with efficient onsite adjustments.

# Design Your Porcelain Program

## CREATE A SIGNATURE LOOK FOR YOUR PROJECT

Porcelanosa lets you co-design exclusive porcelain panels. A truly unique finish for landmark architecture. This is for façade designs that use more than **10,000 sf** of large-format panels or over **15,000 sf** of regular-format panels. Bring your creative vision to life with personalized textures, tones, and dimensions.

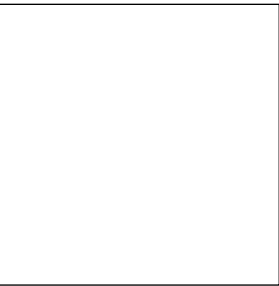
# Panel Sizes Available 1/2” Thick (12 mm)

## Large Format CONTINUOUS PRESS TECHNOLOGY



126” x 63”

## Regular Format PRE-SET SIZED MOLD TECHNOLOGY



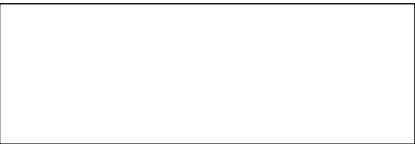
48” x 48”



71” x 31”



59” x 20”



71” x 24”

*\* Other smaller molds available  
such as 39”x39”, 36”x18”,  
32”x32”, 24”x24”*

**UKS / Undercut Keil System**

The diagram illustrates the UKS / Undercut Keil System, showing a cross-section of a wall and floor assembly. The system is designed for the installation of a porcelain panel (PP) on a substrate (001). The assembly includes various components labeled with codes and descriptions in the legend.

**Legend:**

- 001** SUBSTRATE
- A02** VFS ANCHOR (VARIES ACCORDING TO SUBSTRATE)
- S01** VFS SCREW FIXING PLATE
- S02** VFS SCREW PROFILES T/L (INCL.WASHER)
- S05** VFS C-BOLT SLEEVE&SCREW XT12MM A4-HS8.5
- S06** VFS C-BOLT LEVEL-SCREW
- B01** VFS THERMAL BRIDGE 1/8" DOUBLE BRACKETS
- B02** VFS DOUBLE L-BRACKET
- B11** VFS THERMAL BRIDGE 1/8" SINGLE BRACKETS
- B12** VFS SINGLE L-BRACKET
- P06** VFS C-BOLT HORIZONTAL C-PROFILE 2"
- P07** VFS T PROFILE 60X60 (3M)
- C02** VFS C-BOLT LEVELING CLIP 2"
- C04** VFS C-BOLT U-PLATE 2"
- C06** VFS C-BOLT FIXED CLIP 2"
- PP** PORCELAIN PANEL 12 MM THICKNESS

**Labels in the diagram:**

- B01**: VFS Thermal Bridge 1/8" Double Brackets
- A02**: VFS Anchor (Varies according to substrate)
- S02**: VFS Screw Profiles T/L (Incl. Washer)
- P06**: VFS C-Bolt Horizontal C-Profile 2"
- C06**: VFS C-Bolt Fixed Clip 2"
- S05**: VFS C-Bolt Sleeve & Screw XT12MM A4-HS8.5
- S06**: VFS C-Bolt Level-Screw
- B02**: VFS Double L-Bracket
- B11**: VFS Thermal Bridge 1/8" Single Brackets
- B12**: VFS Single L-Bracket
- P07**: VFS T Profile 60X60 (3M)
- C02**: VFS C-Bolt Leveling Clip 2"
- C04**: VFS C-Bolt U-Plate 2"
- PP**: Porcelain Panel 12 mm thickness

- UKS / Undercut Keil System**

The diagram illustrates the UKS / Undercut Keil System, showing a cross-section of a wall and floor assembly. The system is designed for the installation of a porcelain panel (PP) on a substrate (001). The assembly includes various components labeled with codes and descriptions in the legend.

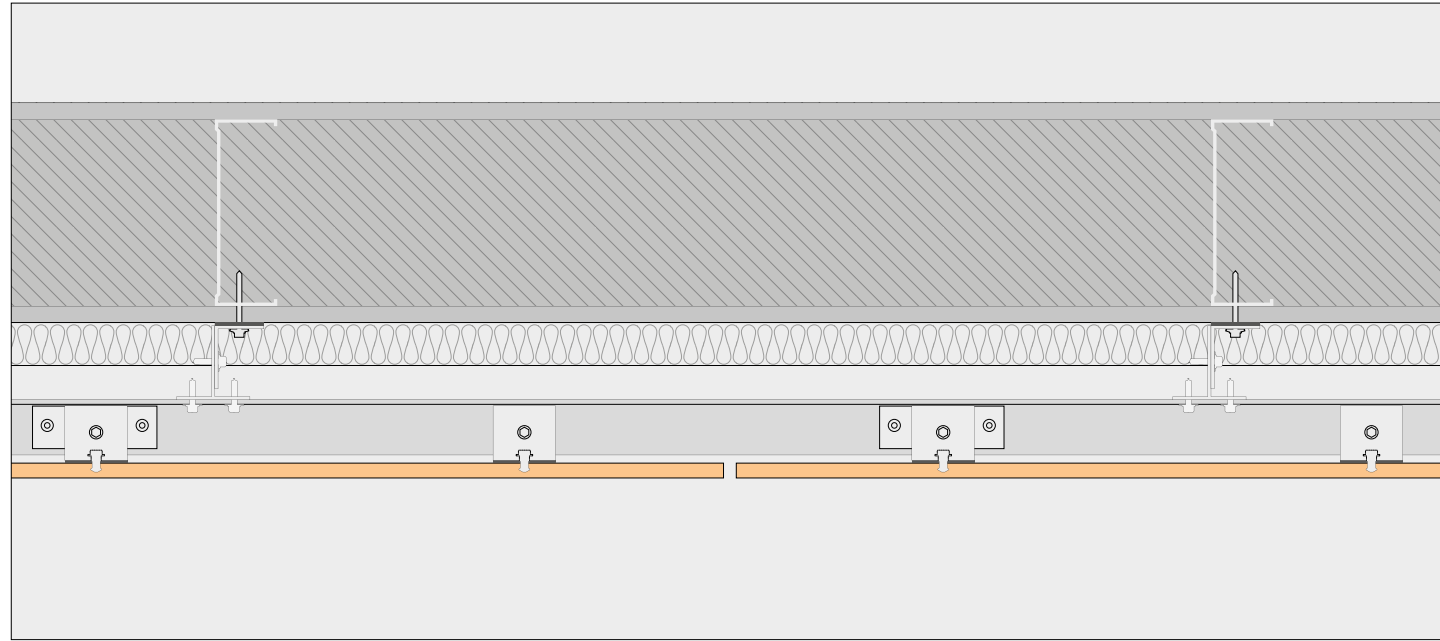
**Legend:**

  - 001** SUBSTRATE
  - A02** VFS ANCHOR (VARIES ACCORDING TO SUBSTRATE)
  - S01** VFS SCREW FIXING PLATE
  - S02** VFS SCREW PROFILES T/L (INCL.WASHER)
  - S05** VFS C-BOLT SLEEVE&SCREW XT12MM A4-HS8.5
  - S06** VFS C-BOLT LEVEL-SCREW
  - B01** VFS THERMAL BRIDGE 1/8" DOUBLE BRACKETS
  - B02** VFS DOUBLE L-BRACKET
  - B11** VFS THERMAL BRIDGE 1/8" SINGLE BRACKETS
  - B12** VFS SINGLE L-BRACKET
  - P06** VFS C-BOLT HORIZONTAL C-PROFILE 2"
  - P07** VFS T PROFILE 60X60 (3M)
  - C02** VFS C-BOLT LEVELING CLIP 2"
  - C04** VFS C-BOLT U-PLATE 2"
  - C06** VFS C-BOLT FIXED CLIP 2"
  - PP** PORCELAIN PANEL 12 MM THICKNESS

**Labels in the diagram:**

  - B01**: VFS Thermal Bridge 1/8" Double Brackets
  - A02**: VFS Anchor (Varies according to substrate)
  - S02**: VFS Screw Profiles T/L (Incl. Washer)
  - P06**: VFS C-Bolt Horizontal C-Profile 2"
  - C06**: VFS C-Bolt Fixed Clip 2"
  - S05**: VFS C-Bolt Sleeve & Screw XT12MM A4-HS8.5
  - S06**: VFS C-Bolt Level-Screw
  - B11**: VFS Thermal Bridge 1/8" Single Brackets
  - B12**: VFS Single L-Bracket
  - P07**: VFS T Profile 60X60 (3M)
  - C02**: VFS C-Bolt Leveling Clip 2"
  - C04**: VFS C-Bolt U-Plate 2"
  - PP**: Porcelain Panel 12 mm thickness

# UKS / Undercut Keil System



Horizontal Typical Detail.

## SUBSTRUCTURE & BUILD-UP

The UKS system has adjustable angle brackets, vertical T-profiles, and C-rails. These parts create a ventilated cavity between the panel and the structural wall. This build-up accommodates exterior insulation and ensures continuous airflow behind the cladding.

### Adjustable brackets:

Single and double brackets available with projections of 1-9/16" (40 mm), 2-3/8" (60mm), 3-1/8"(80mm), 3-15/16(100mm), 4-3/4"(120m), 5-1/2"(140mm), 6-5/16"(160 mm) and customizable projections to match thermal and design requirements.

### Max./Min. build-up:

Configurable façade projection with a minimum build-up of 5-1/2".

### Recommended cavity:

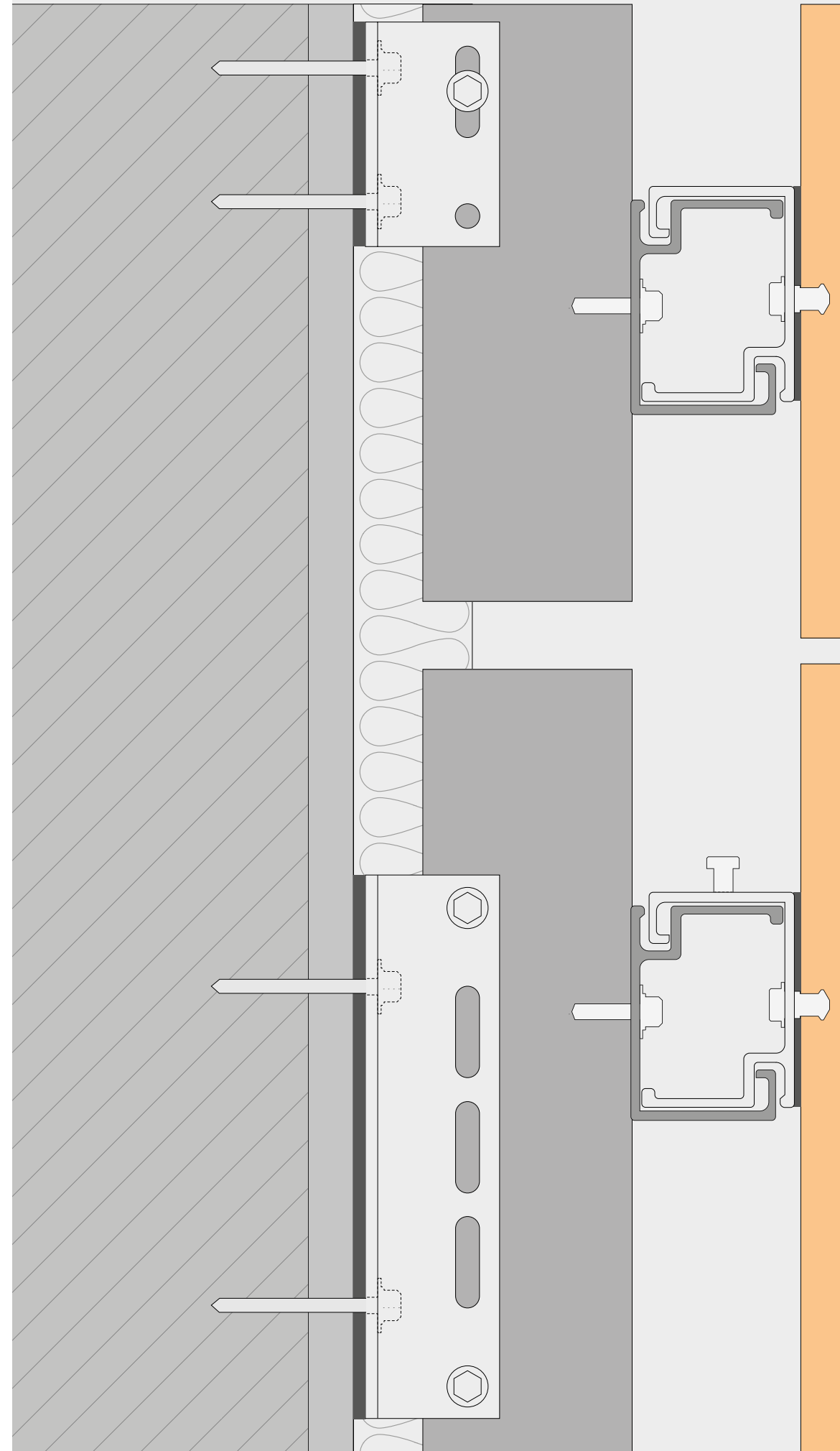
Minimum 1" (25 mm) air gap between insulation and panel.

## TOLERANCE IN-AND-OUT

The system absorbs substrate irregularities and allows for up to 3/4" (20 mm) of adjustability with the brackets.

### Typical joints

- Standard vertical and horizontal joint: 3/8" (10 mm)
- Custom joint widths are available based on project requirements.



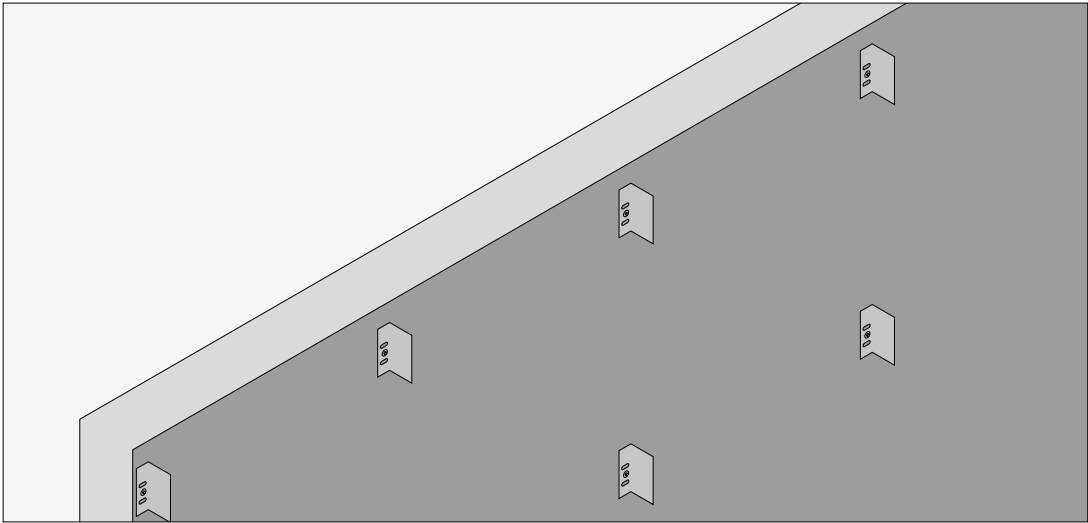
Vertical Typical Detail



# UKS / Undercut Keil System

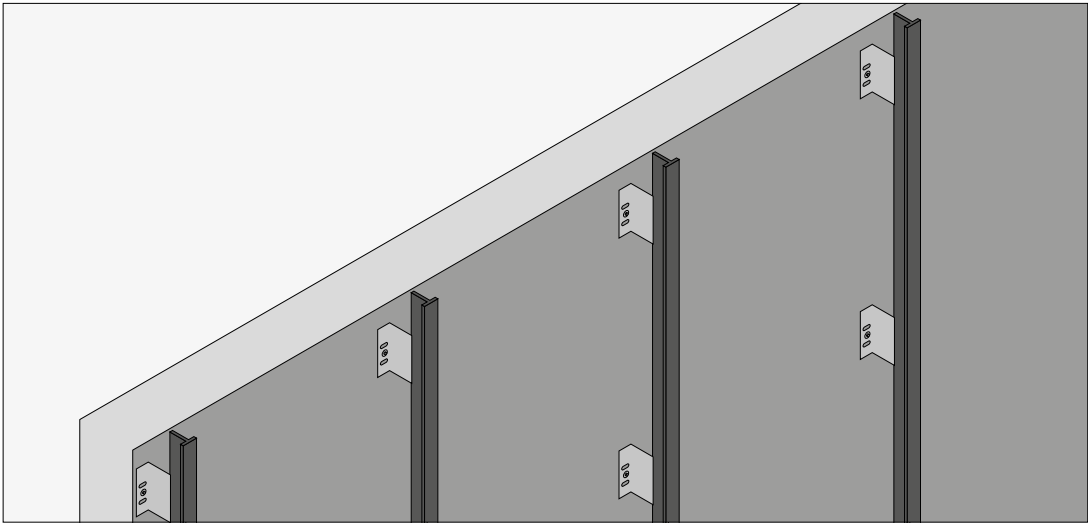
1

Installation of angle brackets with thermal breaks.



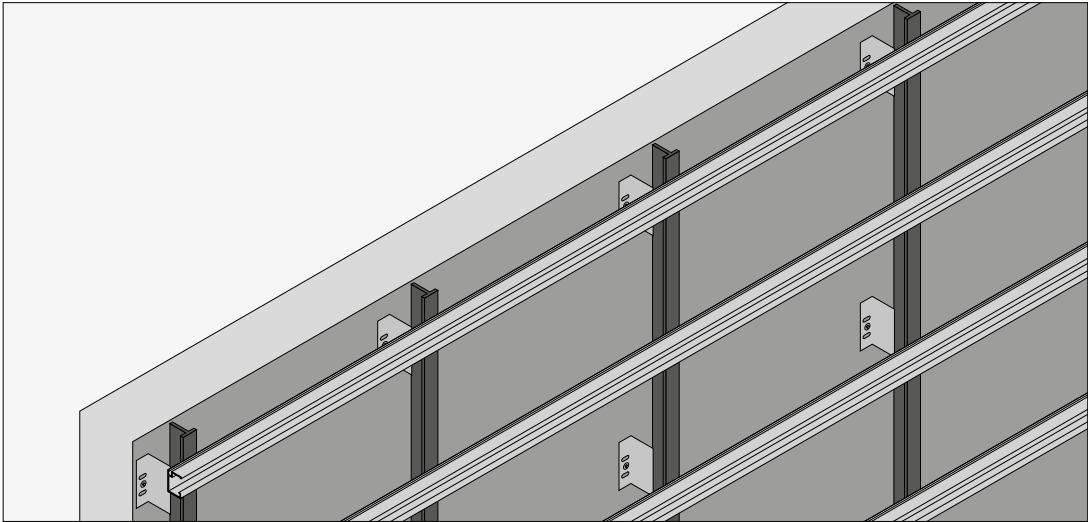
2

Vertical placement of T-profiles



3

Fixing of horizontal C-rails



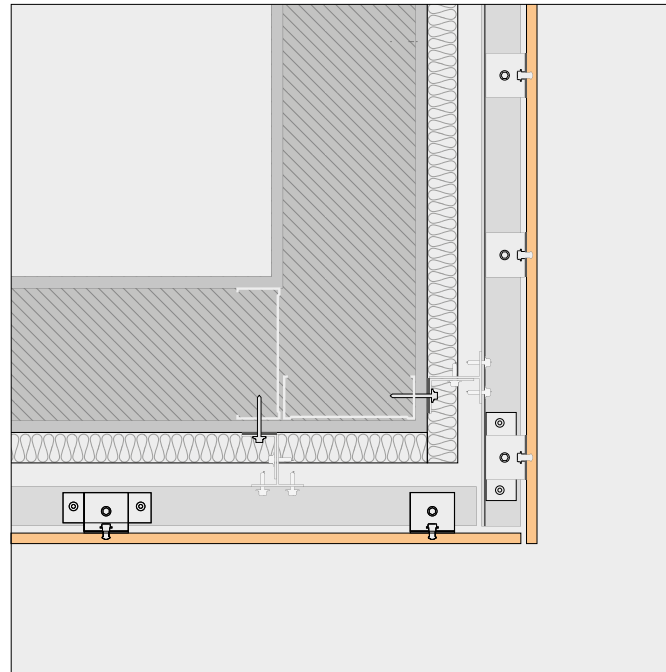
4

Placement of Porcelanosa porcelain panels, according to façade layout



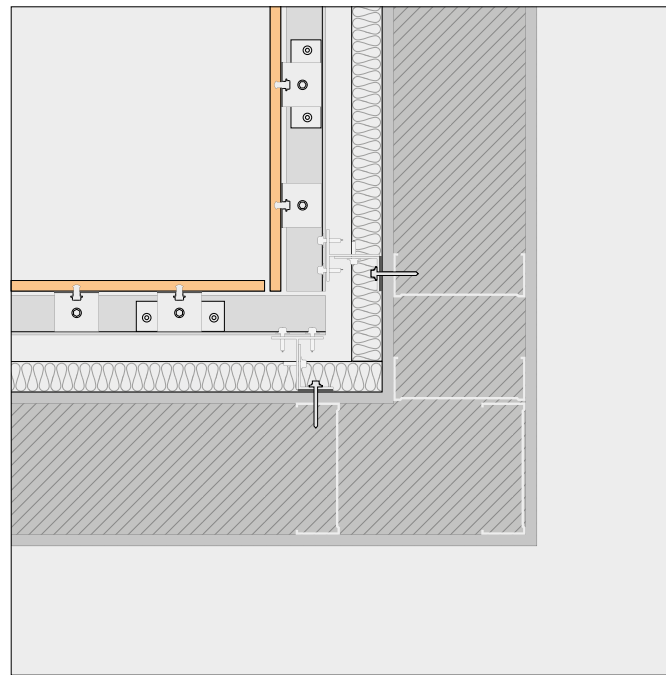
# UKS / Undercut Keil System

**Every edge, every transition** —  
Fully resolved with precision



Outside Corner Detail

**No corner left unresolved** —  
Complete integration across all façade junctions

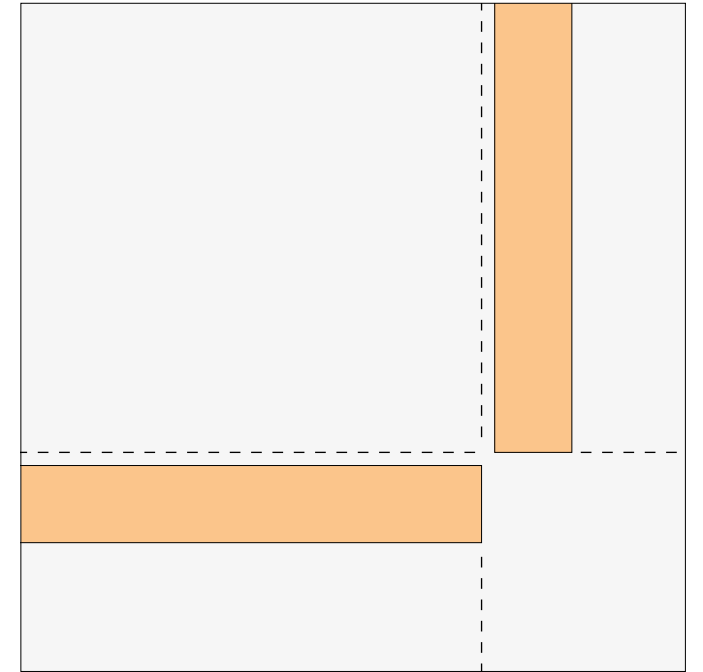


Inside Corner Detail

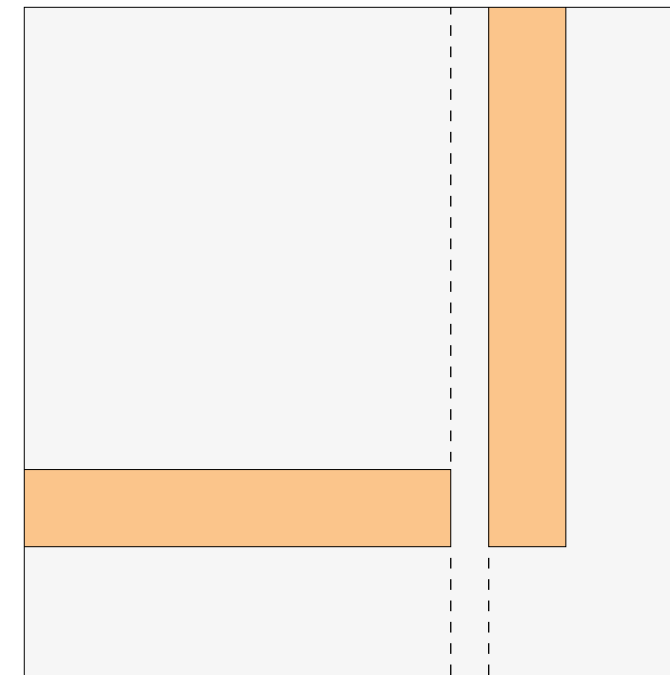
## Type of Corners

Play and design with our different types of corners. Choose elegant solutions with the typical corner, mitered corners, and recessed corners.

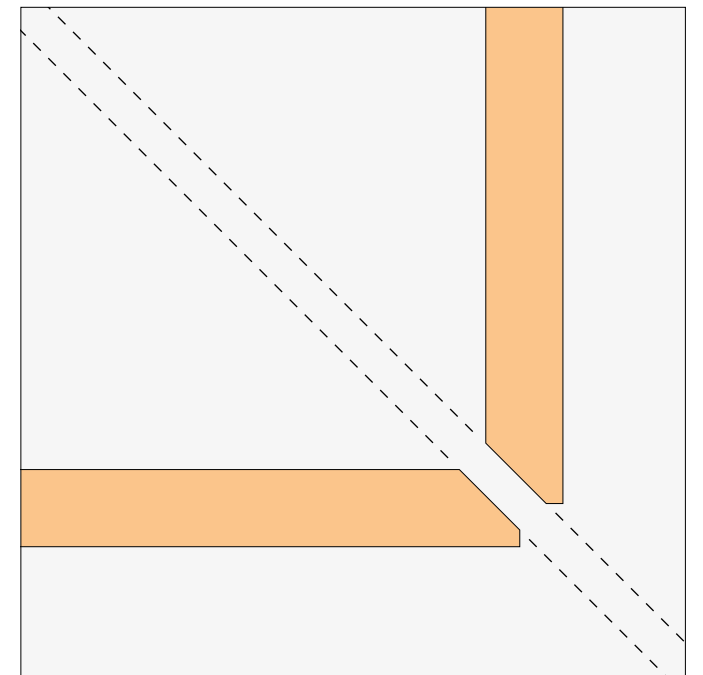
Recessed corners are ideal for seismic zones.



Recessed Corner Detail



Typical Corner Detail

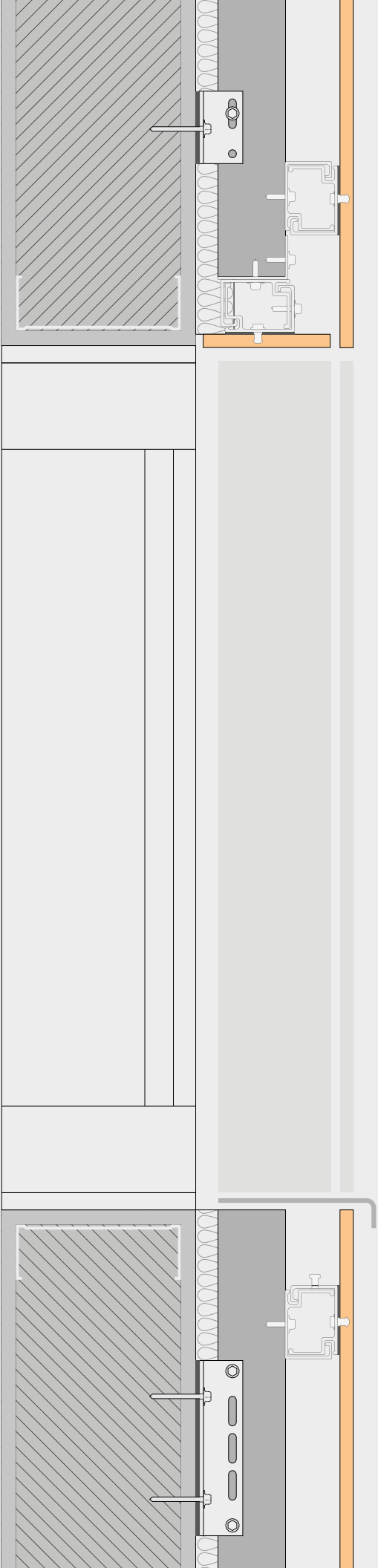
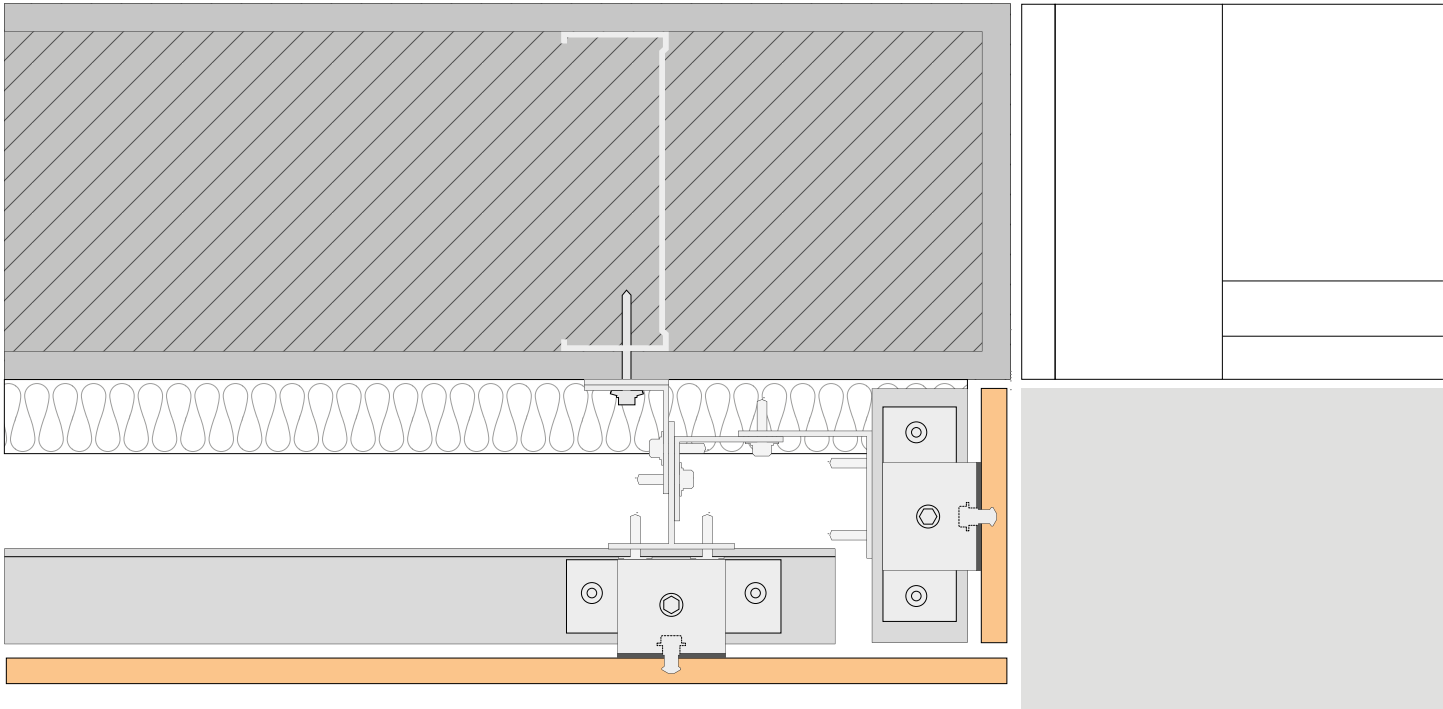


Mitered Corner Detail

# UKS / Undercut Keil System

## Opening Solutions

Clad all the vertical returns and horizontal heads of your project's openings with our solutions.  
**It requires at least a 2 - 3/4" width return.**

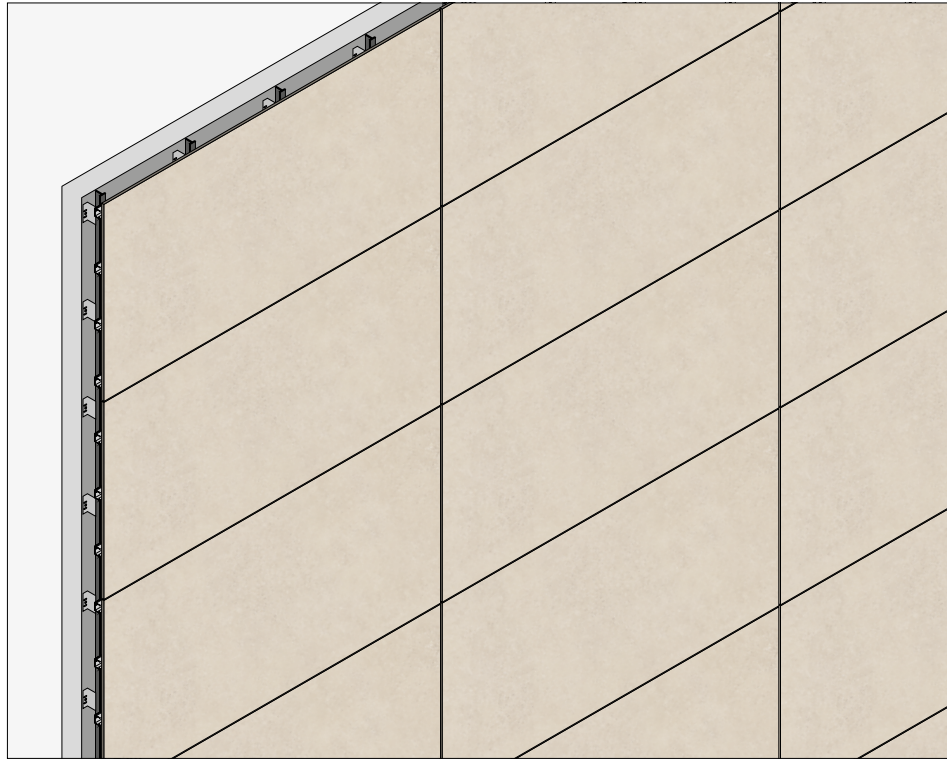




# UKS / Undercut Keil System

## Horizontal Layout

**Emphasize horizontality.** This layout enhances the perception of width and balance. It brings a sense of calm and order to the elevation. The repetition of straight, perfectly aligned porcelain panels reinforces the architectural rhythm. A composition of uniformity and precision.



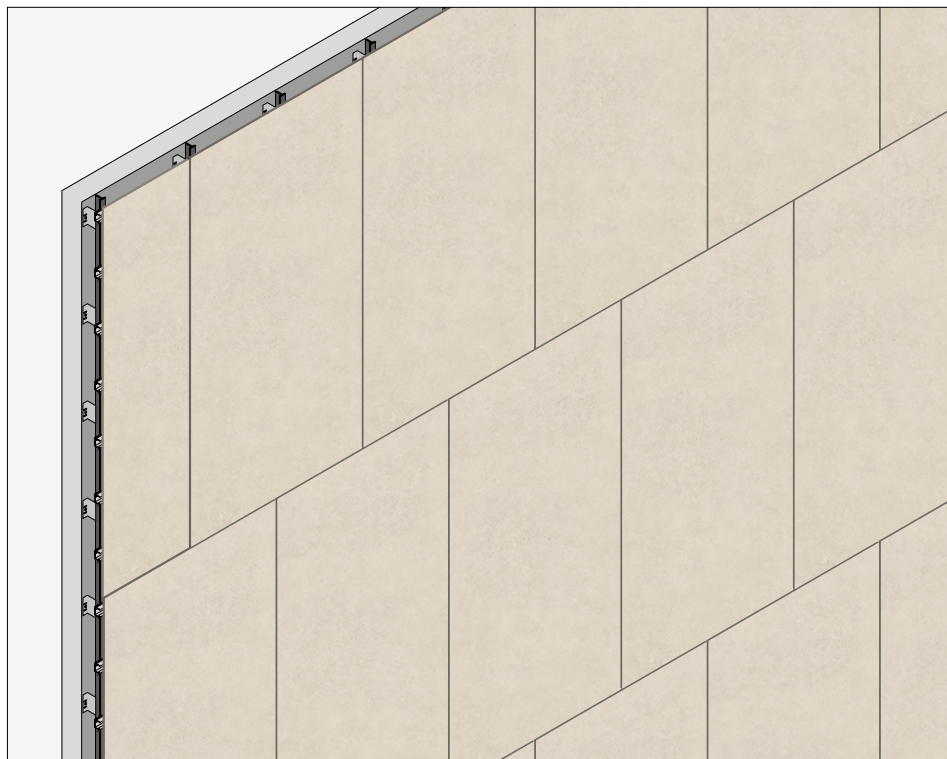
## Vertical Layout

**Emphasize verticality.** This layout accentuates the building's height. It adds elegance, lightness, and a feeling of upward movement. The repetition of slender, precisely aligned porcelain panels reinforces the architectural rhythm. A composition defined by refinement and continuity.



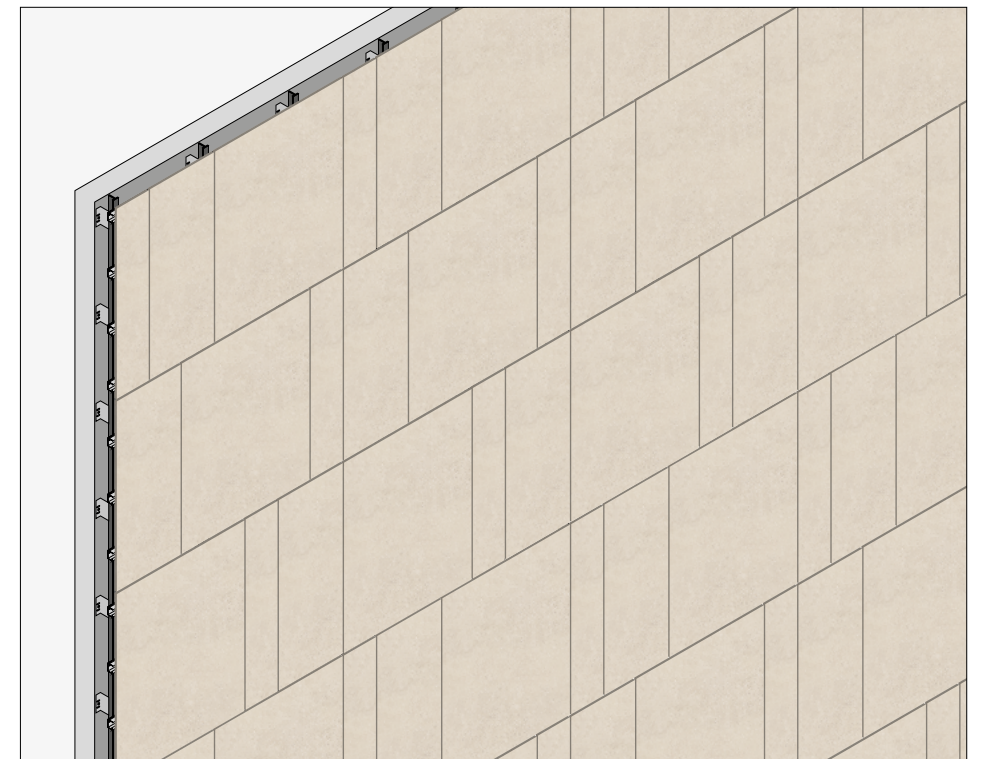
## Staggered Layout

**Emphasize movement.** This arrangement introduces a dynamic rhythm. It creates a visual flow that adds movement to the elevation. The alternating porcelain panels create depth and variation. This enhances the architectural composition with a sense of fluidity and modernity.

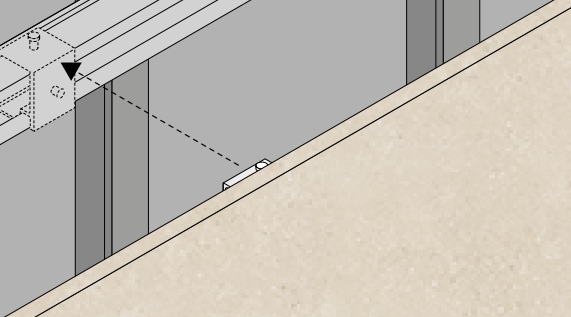


## Mixed Layout

**Emphasize joy and creativity.** Have fun. This arrangement introduces a playful rhythm, variety, and energy. Your design options are unlimited.







Get ahead of the  
design curve!

CONTACT US AT

---

1.866.FACHADA

OR EMAIL US AT

---

[hello@porcelanosafacades.com](mailto:hello@porcelanosafacades.com)

PORCELANOSA **FACADE/**