

PORCELANOSA FACADE/



AC Hotel

Cincinnati, OH

The building features a modern European-style design - both inside and out. It is comprised of 8 stories and an impressive 171 rooms. Using Porcelanosa's "Design Your Own Porcelain" program, the architect created custom porcelain panels for the new AC Hotel by Marriott. Furthermore, the design seemingly incorporates a segmented curved facade and combines a concealed and exposed fasteners system.

Architect	CR Architecture + Design
SF	50,000
Market Segment	Hospitality
Building Type	New Build
Year	2018



Porcelain 1CINCINNATI MOKA

Porcelain 2CINCINNATI CREMA



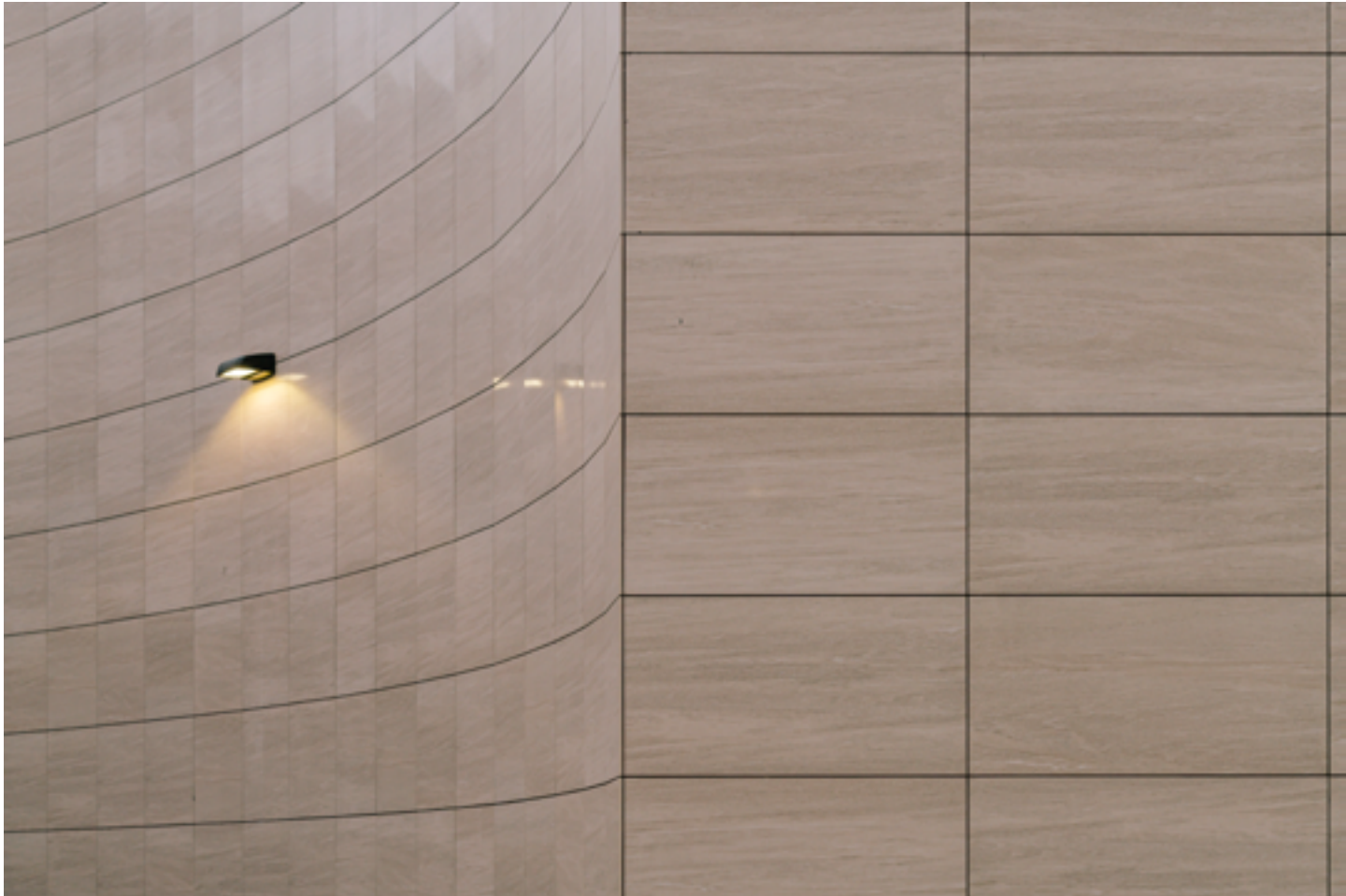
Corner View of Building



Encounter of rounded and flat cladding



Rounded cladding work coordinated with fenestration



Modulation of Porcelain Panels in relation to windows



Porcelain Cladding at Building entrance



www. porcelanosa facades .com

Questions?

Contact us at

201 712 0556 (ext 2218)

Or email us at

hello@porcelanosafacades.com

Find us at

Website

www.porcelanosafacades.com

Headquarters

600 Route 17 North.
Ramsey, NJ 07446

Space for Business card