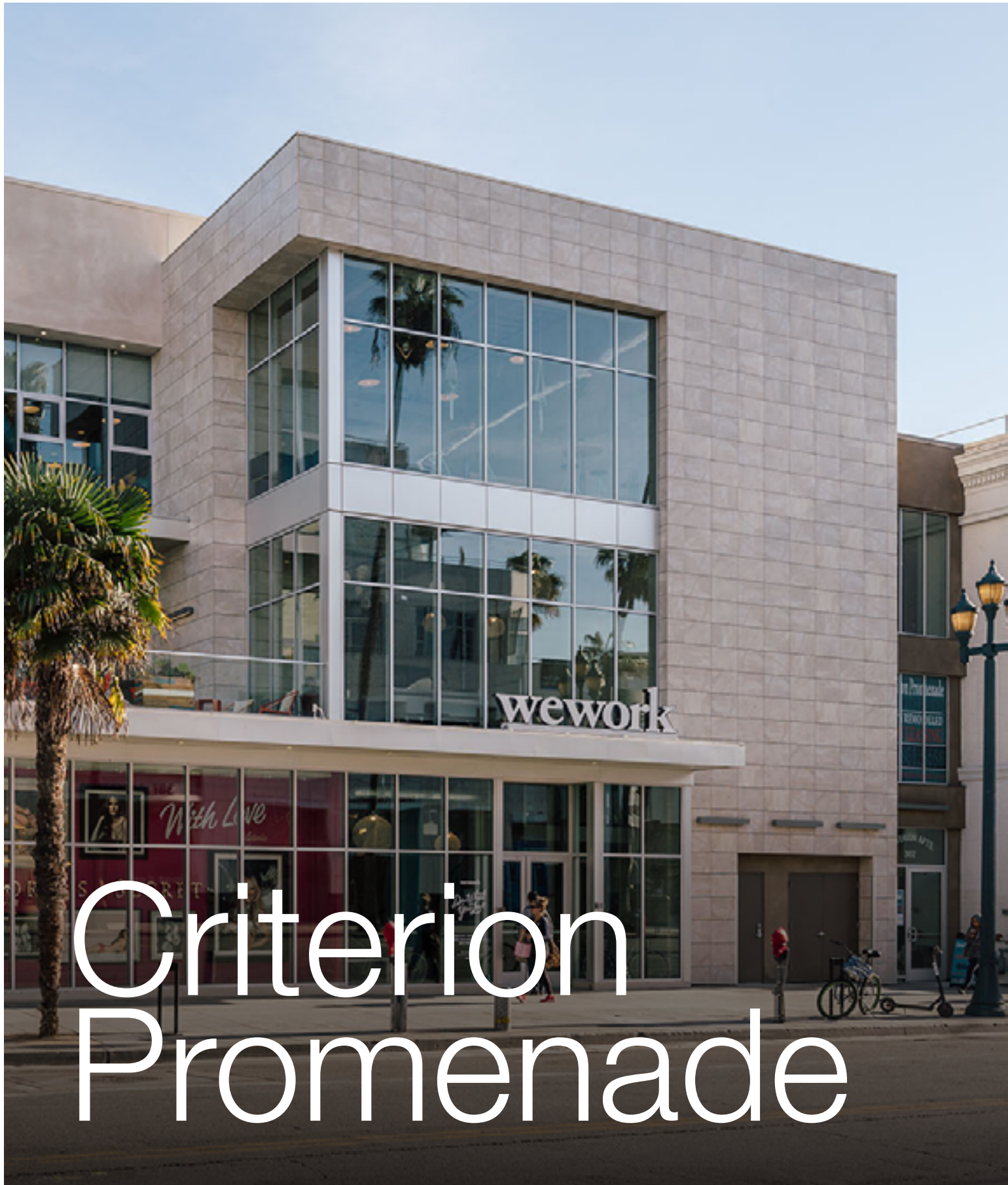


PORCELANOSA FACADE/



Criterion
Promenade

Criterion Promenade

Santa Monica, CA

Located in Santa Monica, CA, the Criterion Promenade is a 3 story building in Santa that features office spaces, 32 studio and 1 bedroom apartments, and a commercial area. It was formerly the Criterion Theatre, which was originally built in 1924. This building is close to the Pacific Park, Santa Monica Farmer's Market, and Santa Monica Beach.

Architect	Van Tilburg, Banvard & Soderbergh
SF	3,700
Market Segment	Multifamily
Building Type	New Build
Year	2015



Porcelain

ARIZONA CALIZA



Frontal view with textured porcelain panels cladding



Details: Storefront glass with porcelain returns and Porcelain parapet coping application



Integration of the old and new with our textured porcelain cladding





Solid porcelain wall at glass tower



Frontal view with textured porcelain panels cladding



**www.
porcelanosa
facades
.com**

Questions?

Contact us at

201 712 0556 (ext 2218)

Or email us at

hello@porcelanosafacades.com

Find us at

Website

www.porcelanosafacades.com

Headquarters

600 Route 17 North.
Ramsey, NJ 07446

Space for Business card