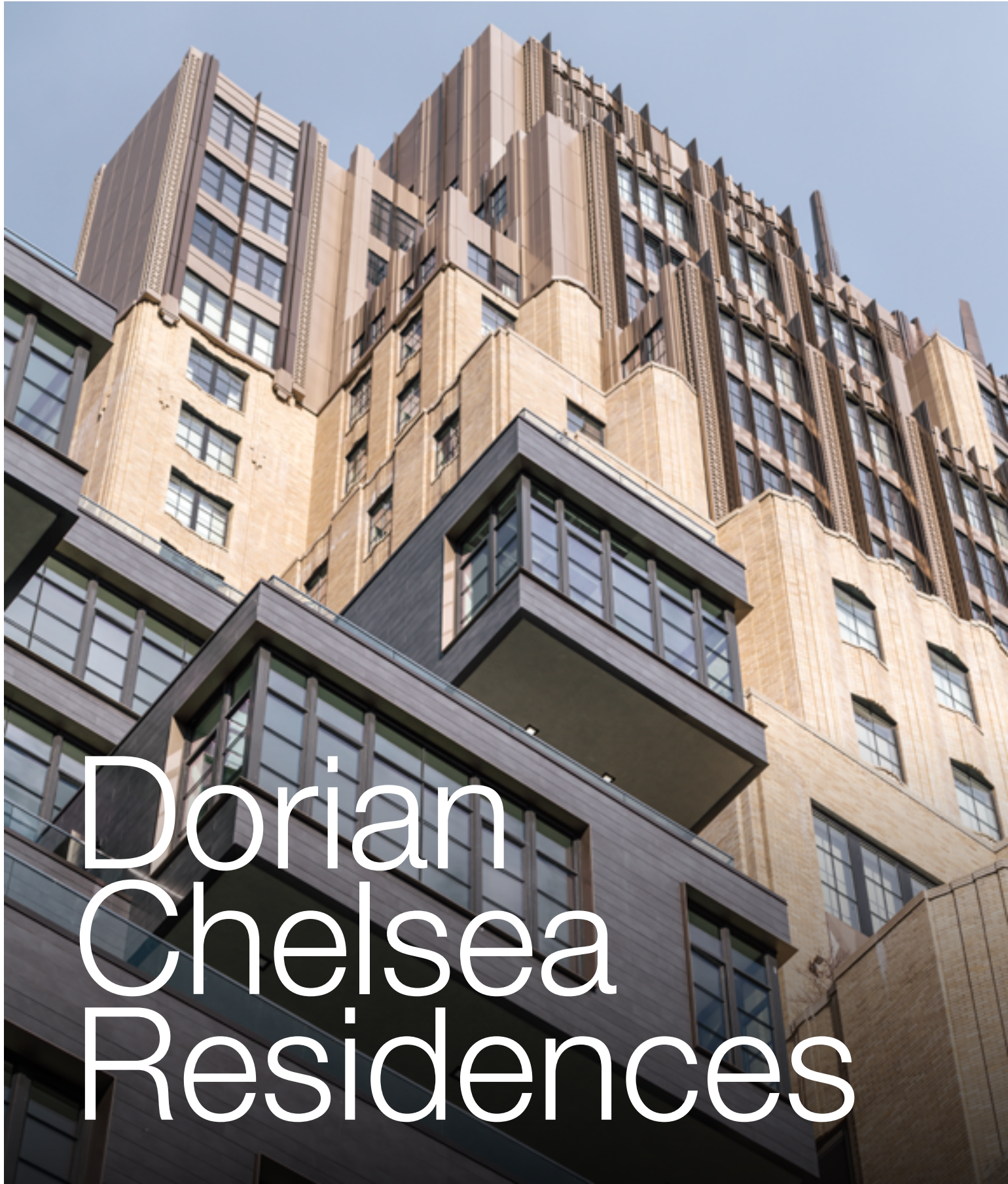


PORCELANOSA
FACADE/



Dorian
Chelsea
Residences

Dorian Chelsea Residences

Manhattan, NY

This stunning 225 West 17th Street is located in the Chelsea neighborhood of Manhattan, NY. Dorian Chelsea Residences is located on the southern end of Chelsea, and is in close proximity to the High Line, Chelsea Piers, and Chelsea Market. Designed by Rogers Partners, this building features over 4,000 square feet of Porcelanosa’s On Black porcelain panels in its ventilated façade design. The building has been in existence since 1912 and has been transformed from its old manufacturing facility to a luxurious residential building with 14 residences that span across 10 floors.

Architect	Rogers Partners
SF	4,465
Market Segment	Multifamily
Building Type	New Build & Re-Clad
Year	2019

Porcelain	ON BLACK
-----------	----------



Street facade with porcelain cladding



Metal window trim at porcelain facade



Metal trim at porcelain cladding facade



Porcelain cladding building retrofit



Flat porcelain rainscreen facade



**www.
porcelanosa
facades
.com**

Questions?

Contact us at

201 712 0556 (ext 2218)

Or email us at

hello@porcelanosafacades.com

Find us at

Website

www.porcelanosafacades.com

Headquarters

600 Route 17 North.
Ramsey, NJ 07446

Space for Business card