

PORCELANOSA FACADE/



168 East
100th Street

168 East 100th Street

Manhattan, NY

168 E 100th Street is an 8 story luxury boutique building located in the East Harlem neighborhood of Manhattan, New York. The building is near Central Park and houses 16 condominium units that feature floor to ceiling windows, balconies, and many other amenities.

Architect	Yossi Melamed RA
SF	7,000
Market Segment	Multifamily
Building Type	New Build
Year	2018

Porcelain 1 **AVENUE GREY NATURE**

Porcelain 2 **AVENUE GREY TEXTURE**



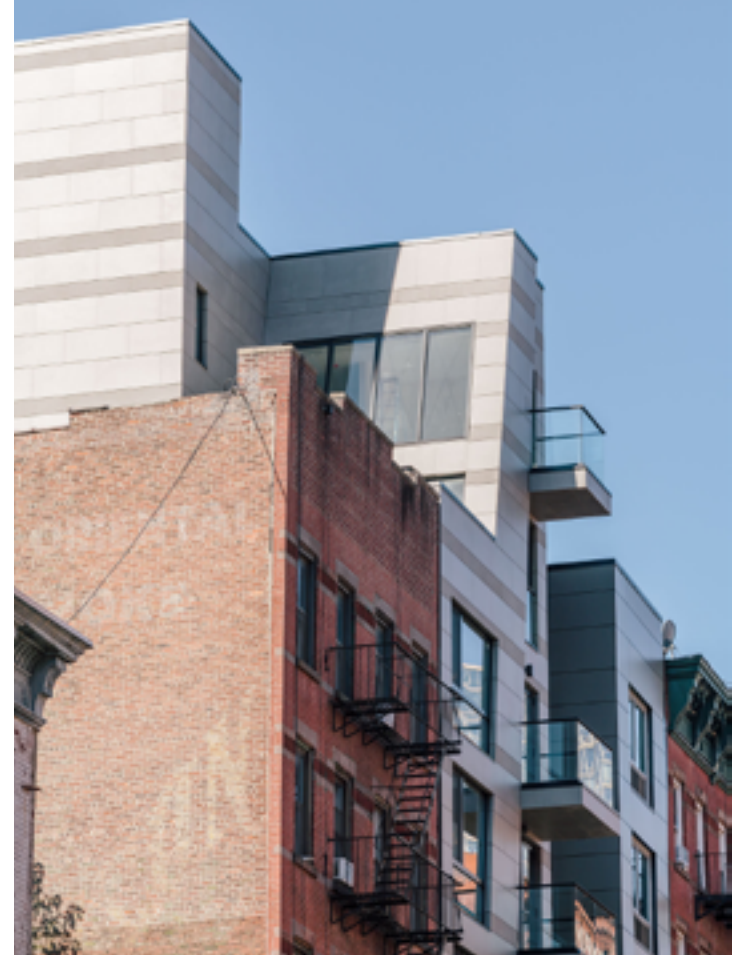
Urban condo with large format porcelain panel rainscreen wall system

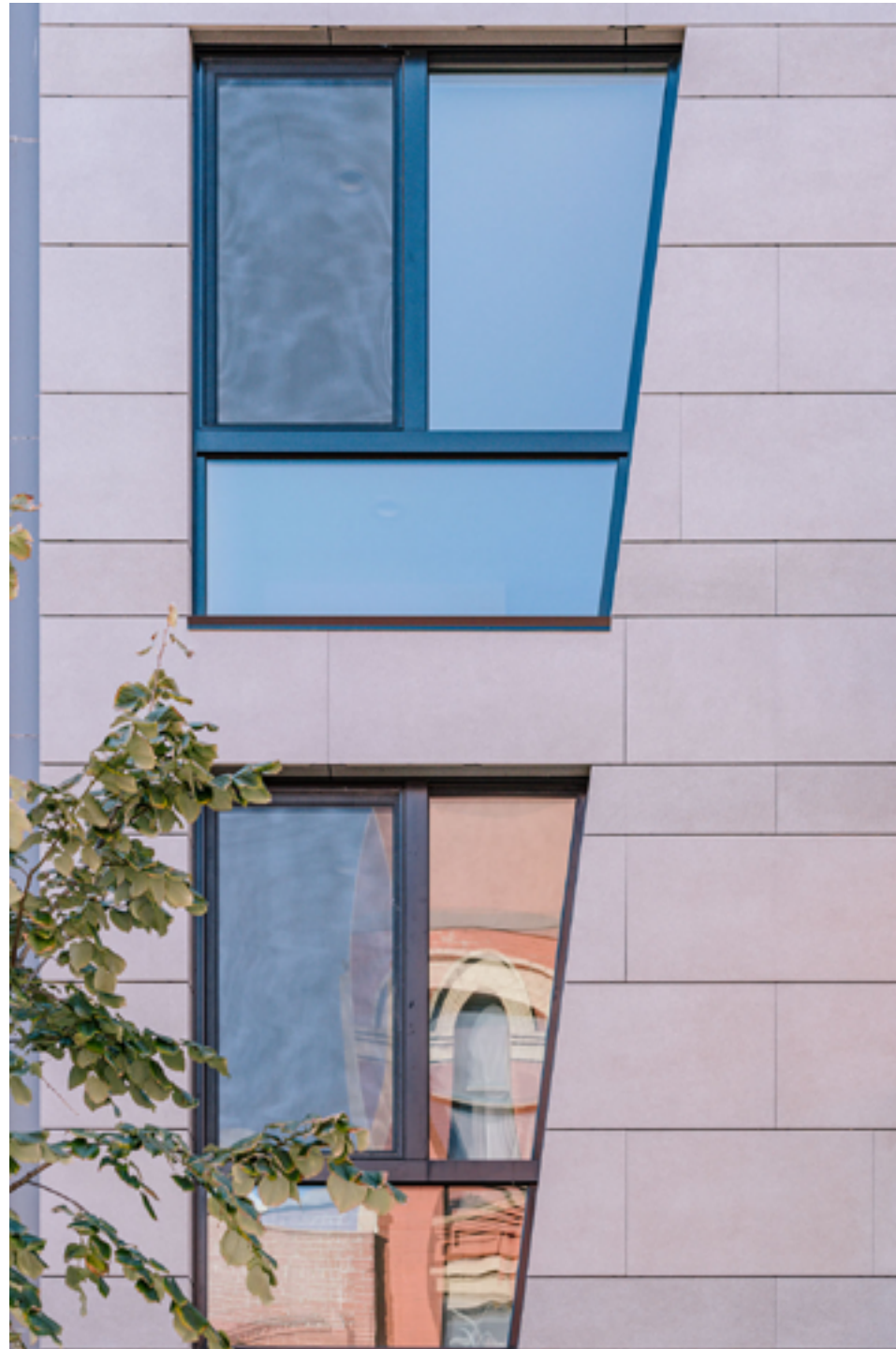


Sloped facade with porcelain cladding

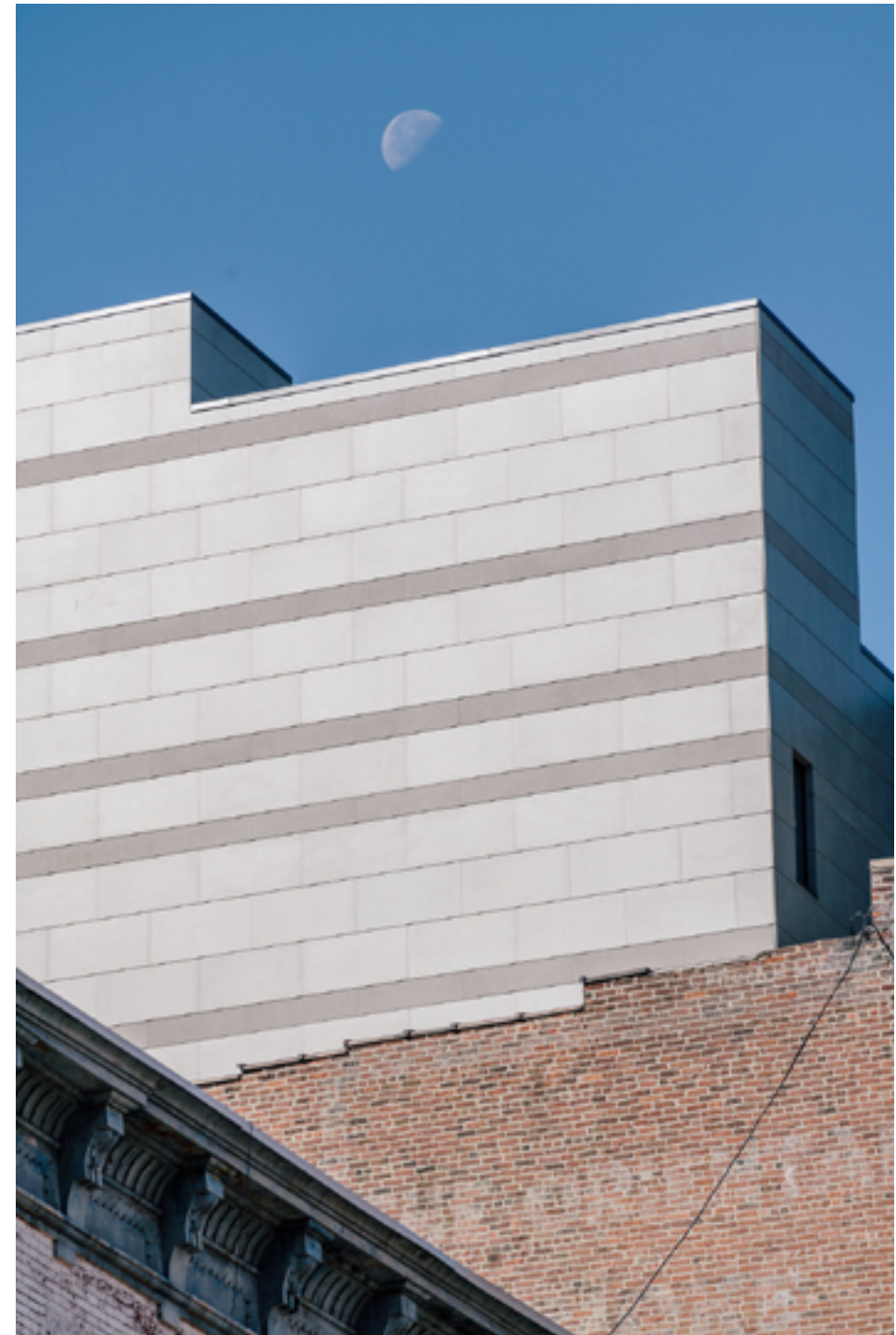


Porcelain panel facade in the existing urban fabric





Custom windows with porcelain cladding return



Porcelain cladding with running bond with horizontal accent



www. porcelanosa facades .com

Questions?

Contact us at
201 712 0556 (ext 2218)

Or email us at
hello@porcelanosafacades.com

Find us at

Website
www.porcelanosafacades.com

Headquarters
600 Route 17 North.
Ramsey, NJ 07446



Space for Business card