

# PORCELANOSA FACADE/



Hudson 36



# Hudson 36

Manhattan, NY

Hudson 36 is a newly constructed high-rise building on 36th Street in Manhattan, New York. It is a 39 story multifamily building that has over 250 rental units, retail space, and more – all with stunning views of the Hudson River.

The building’s façade features over 50,000 square feet of Porcelanosa’s Ark White Bright large format porcelain panels, which features a custom developed color that was created with Ismael Leyva Architects for this project. Porcelanosa Facades’ complementary design assist services, helped achieve the goal to create a unitized facade system with large format porcelain panels.

Architect	Ismael Leyva Architects
SF	50,000
Market Segment	Multifamily
Building Type	New Build / High-rise
Year	2018



Porcelain **ARK WHITE BRIGHT**



High rise with porcelain cladding accents

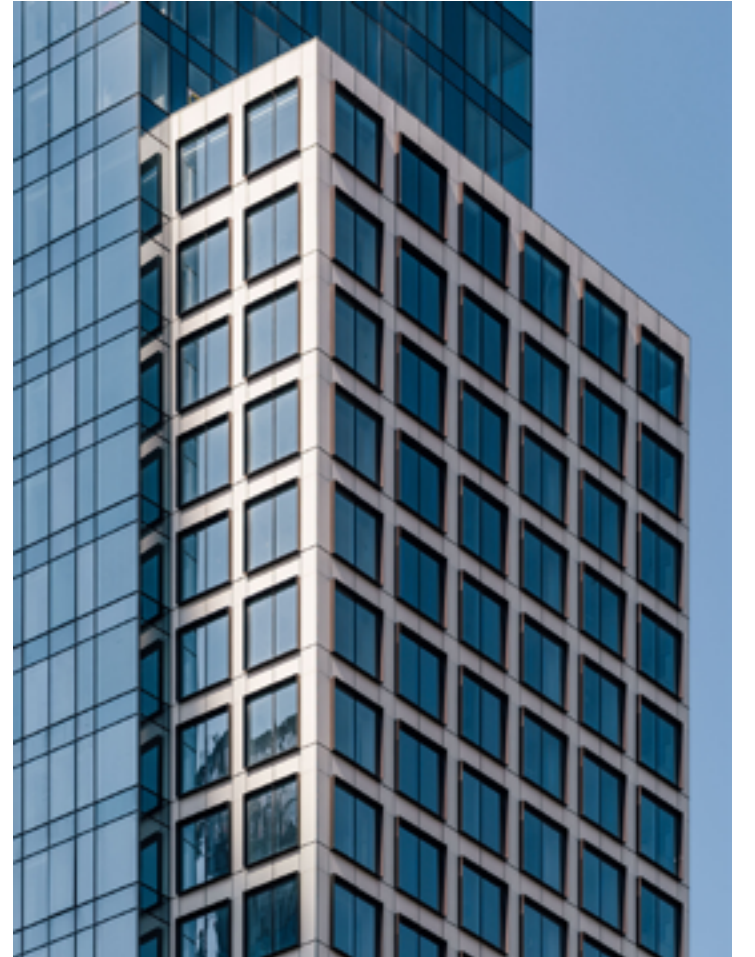




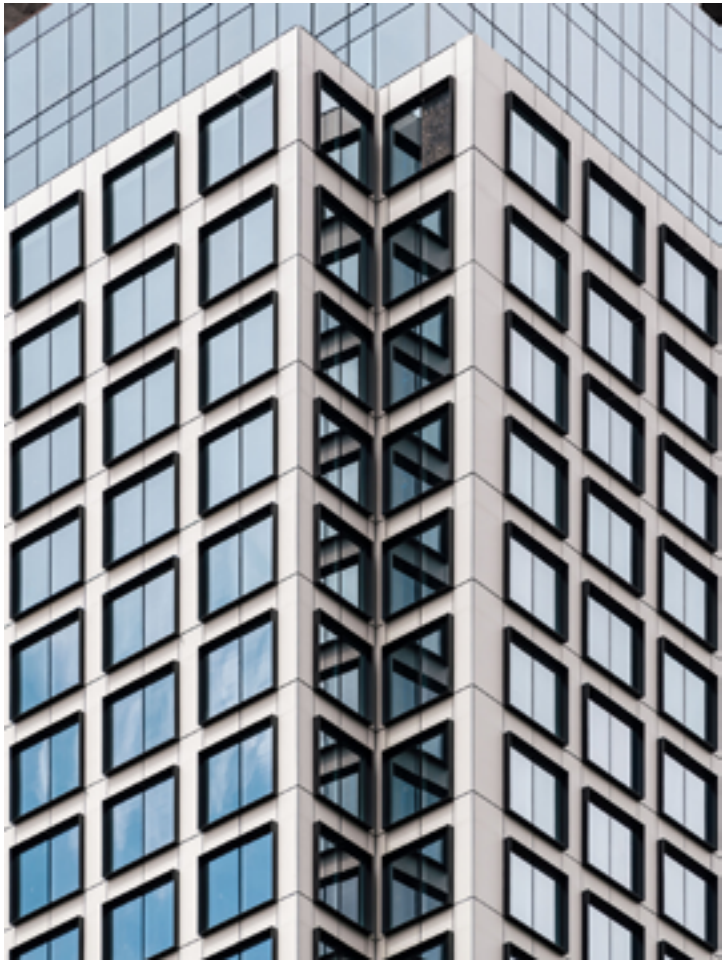
Multifamily tower with ventilated porcelain rainscreen system



View of main ventilated porcelain facade







Multifamily tower with ventilated porcelain rainscreen system



Porcelain panel facade at metal window trim





**WWW.  
porcelanosa  
facades  
.com**

Questions?

**Contact us at**

201 712 0556 (ext 2218)

**Or email us at**

hello@porcelanosafacades.com

Find us at

**Website**

[www.porcelanosafacades.com](http://www.porcelanosafacades.com)

**Headquarters**

600 Route 17 North.  
Ramsey, NJ 07446

Space for Business card