

PORCELANOSA FACADE/



The Alexey

The Alexey

Manhattan, NY

The Alexey features an eye-catching staggered appearance, with parts of the building recessing and appearing as if they are floating out of it. The project uses 13,000 square feet of porcelain cladding between Ferroker Caldera and Tribeca Caliza, throughout the building envelope. The Tribeca Caliza porcelain has a shade variation that creates a natural stone-look effect.

Architect	ND Architecture and Design
SF	13,000
Market Segment	Multifamily
Building Type	New Build
Year	2018



Porcelain **TRIBECA CALIZA**

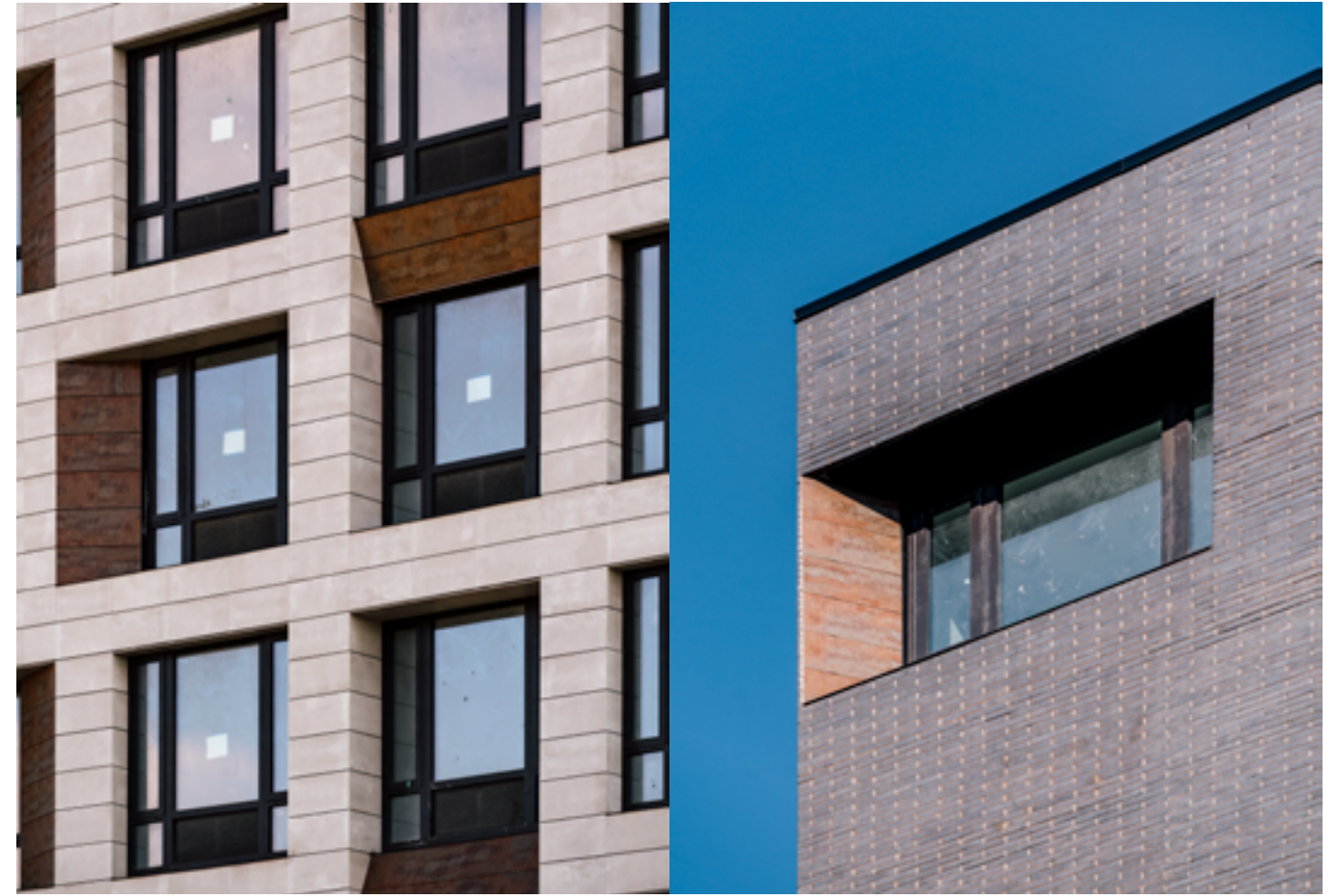
Porcelain **FERROKER CALDERA**



Material exploration with our porcelain cladding system



Metallic and textured porcelain cladding



Detail view at porcelain window returns and accents



Main porcelain panel facade system



**www.
porcelanosa
facades
.com**

Questions?

Contact us at

201 712 0556 (ext 2218)

Or email us at

hello@porcelanosafacades.com

Find us at

Website

www.porcelanosafacades.com

Headquarters

600 Route 17 North.
Ramsey, NJ 07446

Space for Business card