

PORCELANOSA FACADE/



The Nevins

The Nevins

Manhattan, NY

The 21 story building houses 73 different residences that range from studios to 3 bedroom units that take up entire floors.

Issac & Stern Architects worked with Porcelanosa to find the perfect texture and color for their façade design. The Nevins is completely covered in 21,000 square feet of Porcelanosa’s concrete-look Dover Arena porcelain panels, which were cut down to 12 3/8” x 47” panels specifically for the project. The Dover porcelain includes shade variations that create a natural stone effect. The porcelain cladding installation was smoothly coordinated with the prefabricated metal window returns.

Architect	Brent M. Porter & Isaac + Stern Arch
SF	21,000
Market Segment	Multifamily
Building Type	New Build / High-rise
Year	2017



Porcelain

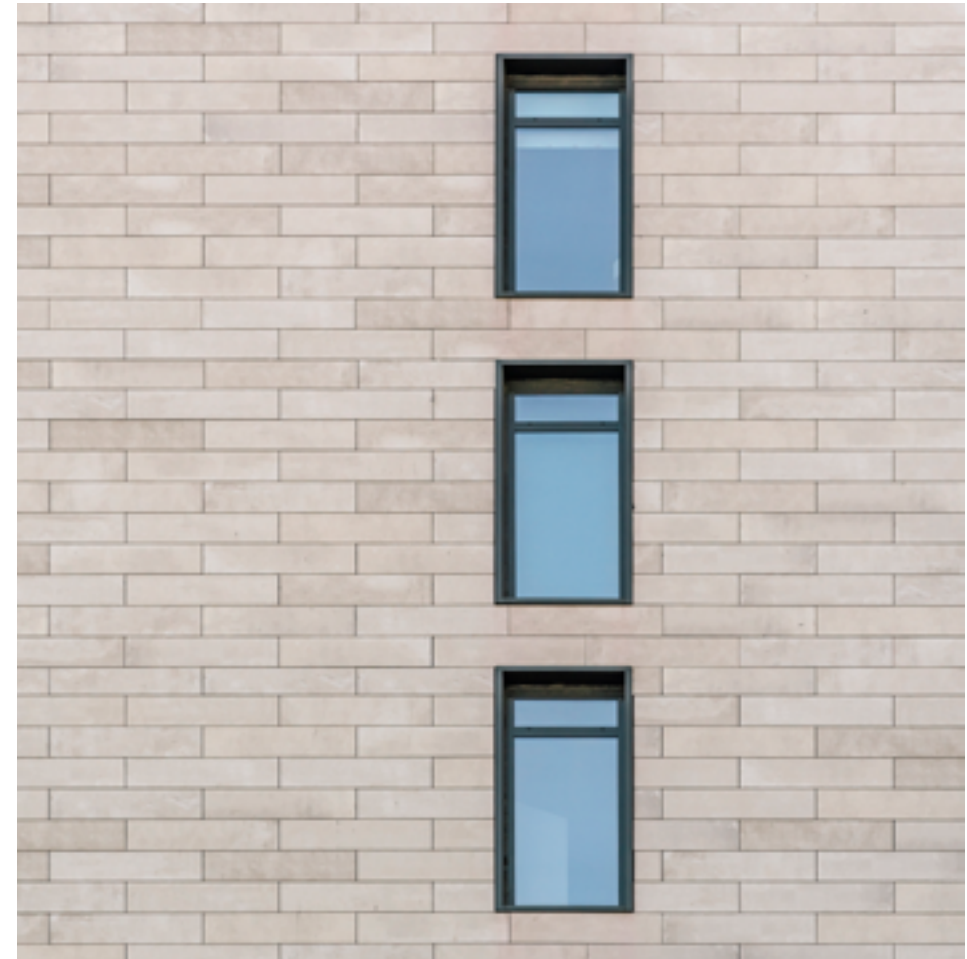
DOVER ARENA



View of high rise tower with Porcelain cladding



Opaque wall with porcelain cladding



Porcelain cladding with running bond pattern



Front view of tower with Porcelain cladding ventilated facade



Opaque wall with porcelain cladding



**www.
porcelanosa
facades
.com**

Questions?

Contact us at

201 712 0556 (ext 2218)

Or email us at

hello@porcelanosafacades.com

Find us at

Website

www.porcelanosafacades.com

Headquarters

600 Route 17 North.
Ramsey, NJ 07446

Space for Business card