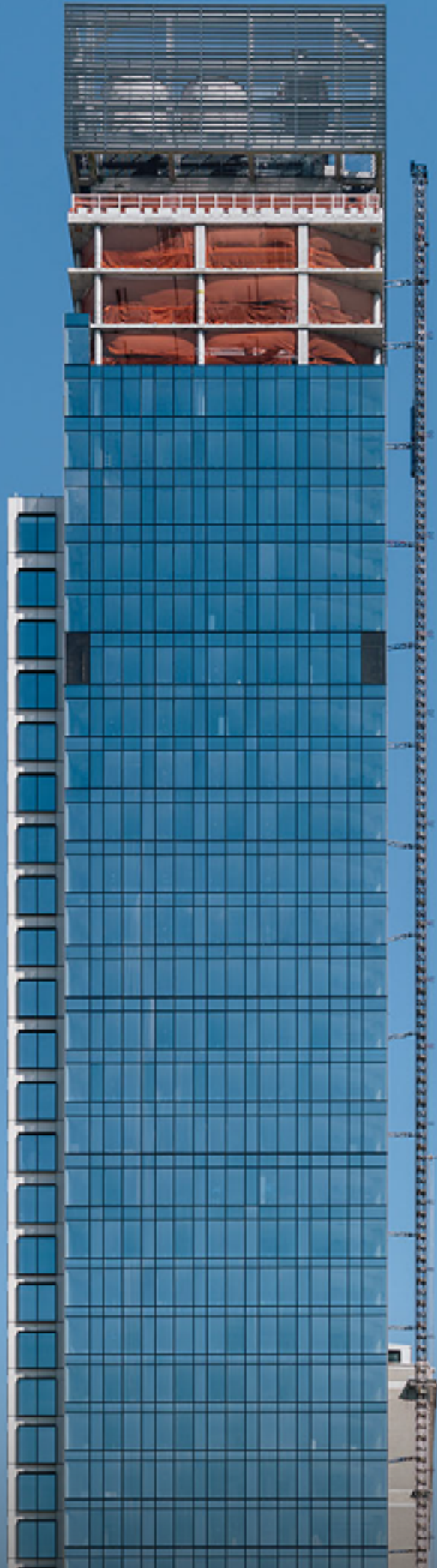


PORCELANOSA
FACADE/

Hudson 36 Case Study



Project
515 W 36th Street

Location
Manhattan, NY

Architect
Ismael Leyva Architects

SF
50,000

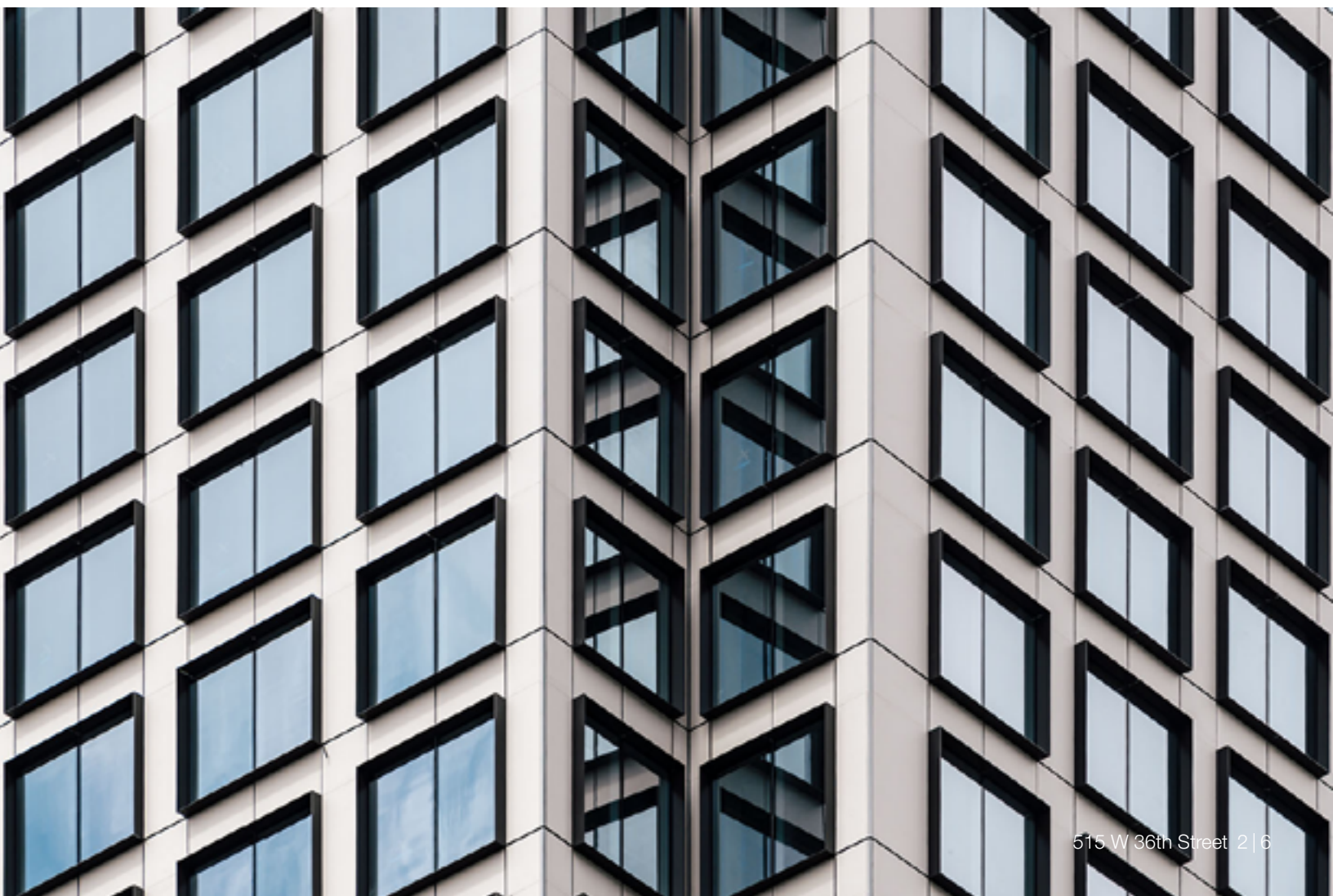
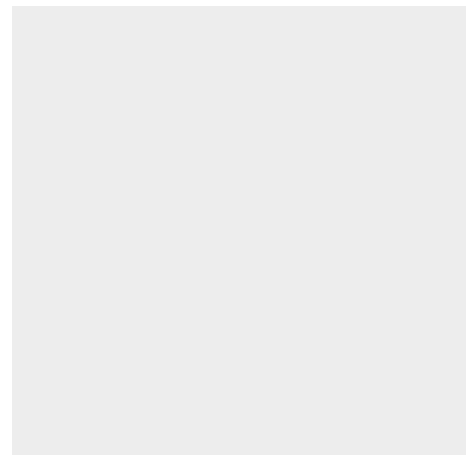
Installer
Alumil

Market Segmet
Multifamily

Building Type
New Build / High-rise

Year
2018

Porcelain
CUSTOM COLOR 515







HIGH FLEXURAL STRENGTH



RESISTANCE TO FREEZE-THAW



MAINTENANCE
FREE



HIGH WIND-LOAD
RESISTANCE



RESISTANCE TO THERMAL
SHOCK



RESISTANCE TO LIGHT
EXPOSURE/FADING



NON-COMBUSTIBLE



RESISTANCE TO CHEMICAL
ATTACK



ENDLESS FINISHES



NO FLAME SPREAD



CRAZING RESISTANCE



NON-POROUS/IMPERVIOUS



HIGHLY DURABLE



IT'S STONE THAT
YOU CAN DESIGN!



PORCELANOSA FACADE/

Manhattan, NY •