

# PORCELANOSA FACADE/

## St. Claire Apartments Case Study





**Project**  
St. Claire Apartments

**Location**  
Toronto, Canada

**Architect**  
Norman Lee & Associates

**SF**  
38,300

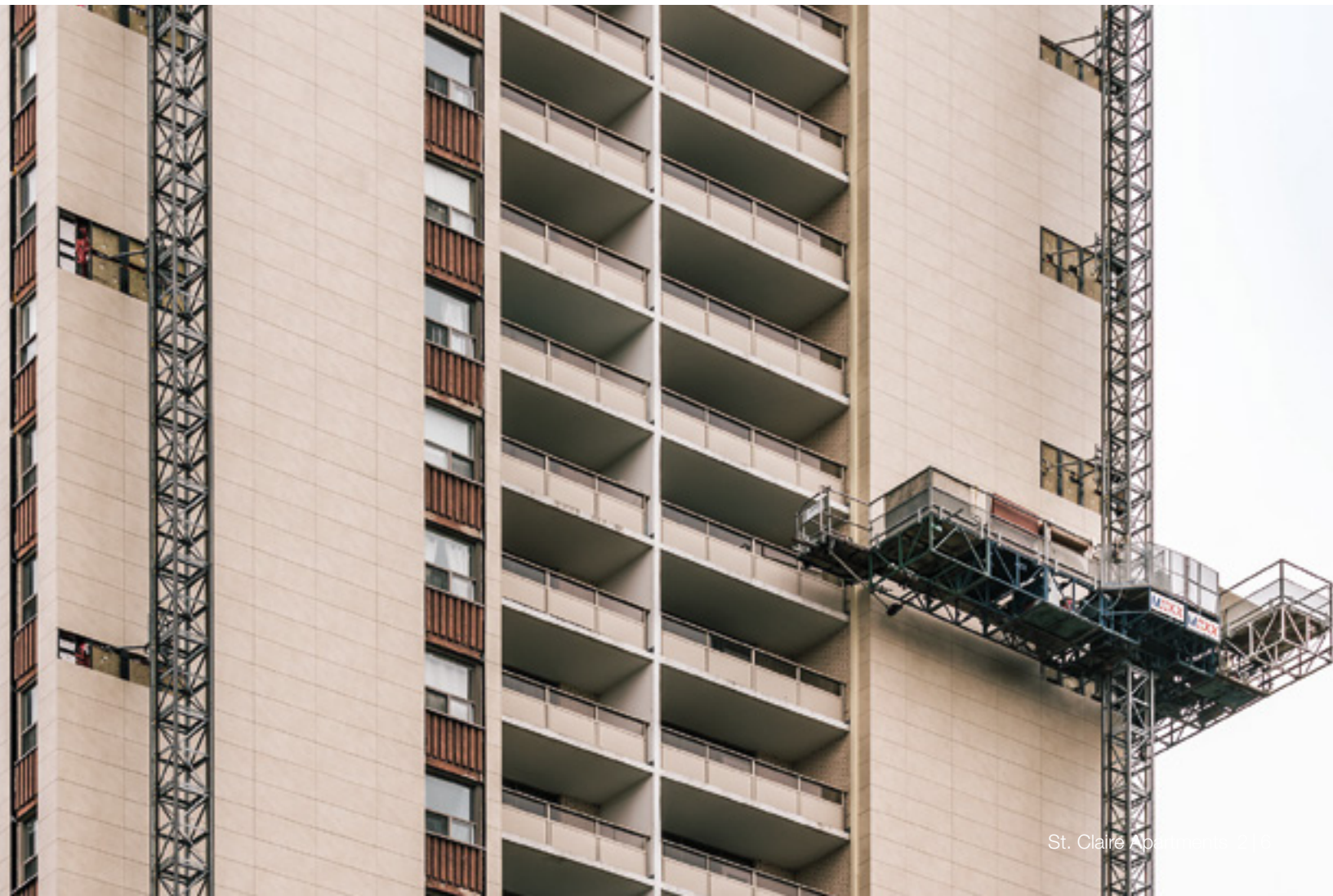
**Installer**  
Bildtec

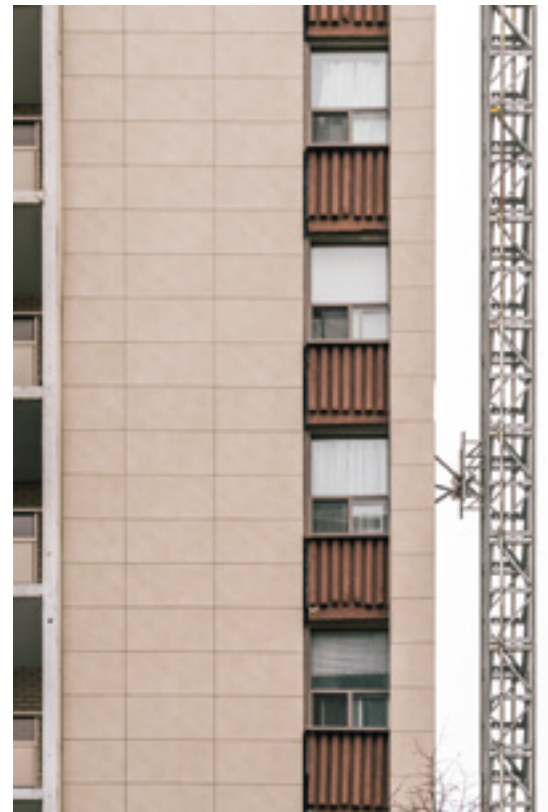
**Market Segment**  
Multifamily

**Build Type**  
Re-Clad

**Year**  
2018

**Porcelain**  
ON BEIGE NATURE







HIGH FLEXURAL STRENGTH



RESISTANCE TO FREEZE-THAW



MAINTENANCE  
FREE



HIGH WIND-LOAD  
RESISTANCE



RESISTANCE TO THERMAL  
SHOCK



RESISTANCE TO LIGHT  
EXPOSURE/FADING



NON-COMBUSTIBLE



RESISTANCE TO CHEMICAL  
ATTACK



ENDLESS FINISHES



NO FLAME SPREAD



CRAZING RESISTANCE



NON-POROUS/IMPERVIOUS



HIGHLY DURABLE



IT'S STONE THAT  
YOU CAN DESIGN!





# PORCELANOSA FACADE

Toronto, Canada •